

LOC/DME I-BOI 111.1 Chan 48	APP CRS 102°	Rwy Idg TDZE Apt Elev	10R 9763 2836 2871	10L 10000 2844 2871
--	------------------------	-----------------------------	--	---

ILS Y or LOC Y RWY 10R

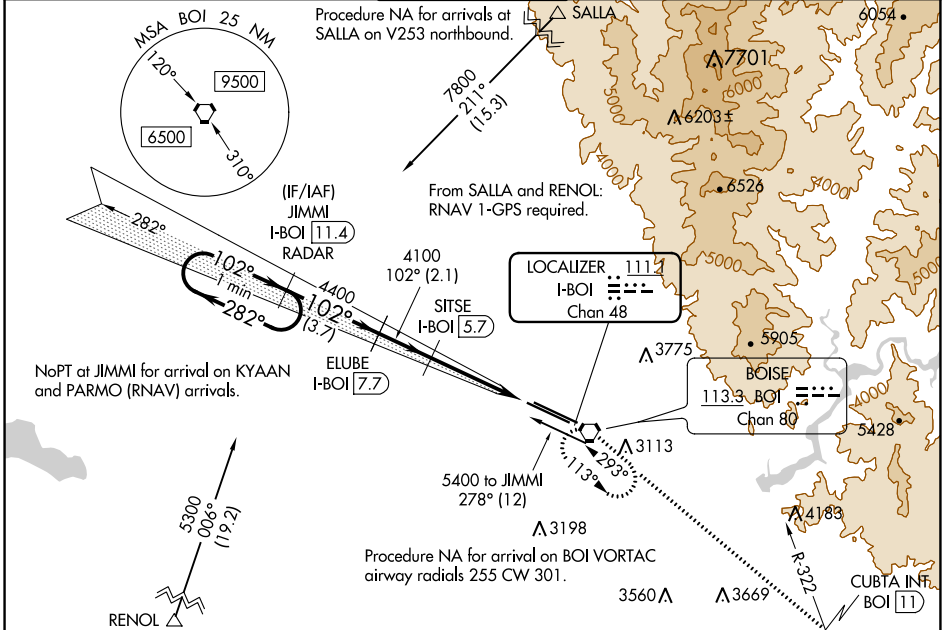
BOISE AIR TRML/GOWEN FLD (BOI)

⚠ Circling NA north of Rwy 10L-28R. DME required. For inop ALS, increase S-LOC 10R Cats C/D visibility to RVR 5500.

ALSF-2 Rwy 10R

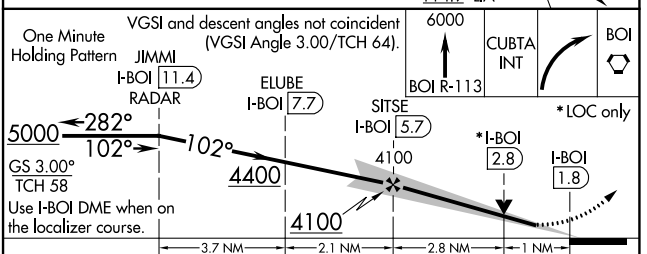
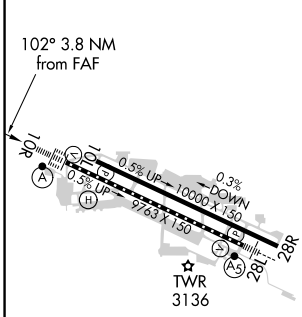
MISSED APPROACH: Climb to 6000 on BOI VORTAC R-113 to CUBTA INT/BOI VORTAC 11 DME and right turn direct BOI VORTAC and hold.

D-ATIS 123.9 290.4	BIG SKY APP CON 119.6 269.4	BOISE TOWER 118.1 257.8	GND CON 121.7 348.6	CLNC DEL 125.9 323.2
------------------------------	---------------------------------------	--	-------------------------------	--------------------------------



ELEV 2871	D TDZE 10R 2836
	TDZE 10L 2844

RADAR or DME REQUIRED



CATEGORY	A	B	C	D
S-ILS 10R	3036/18 200 (200-½)			
S-LOC 10R	3200/24	364 (400-½)	3200/35	364 (400-¾)
SIDESTEP 10L	3220-1	376 (400-1)	3220-1½ 376 (400-1½)	3220-2 376 (400-2)
C CIRCLING	3440-1	569 (600-1)	3740-2½ 869 (900-2½)	3820-3 949 (1000-3)

REIL Rwy 10L
TDZ/CL Rws 10R and 28L
HIRL Rws 10L-28R and 10R-28L

NW-1, 22 APR 2021 to 20 MAY 2021

NW-1, 22 APR 2021 to 20 MAY 2021