

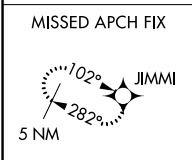
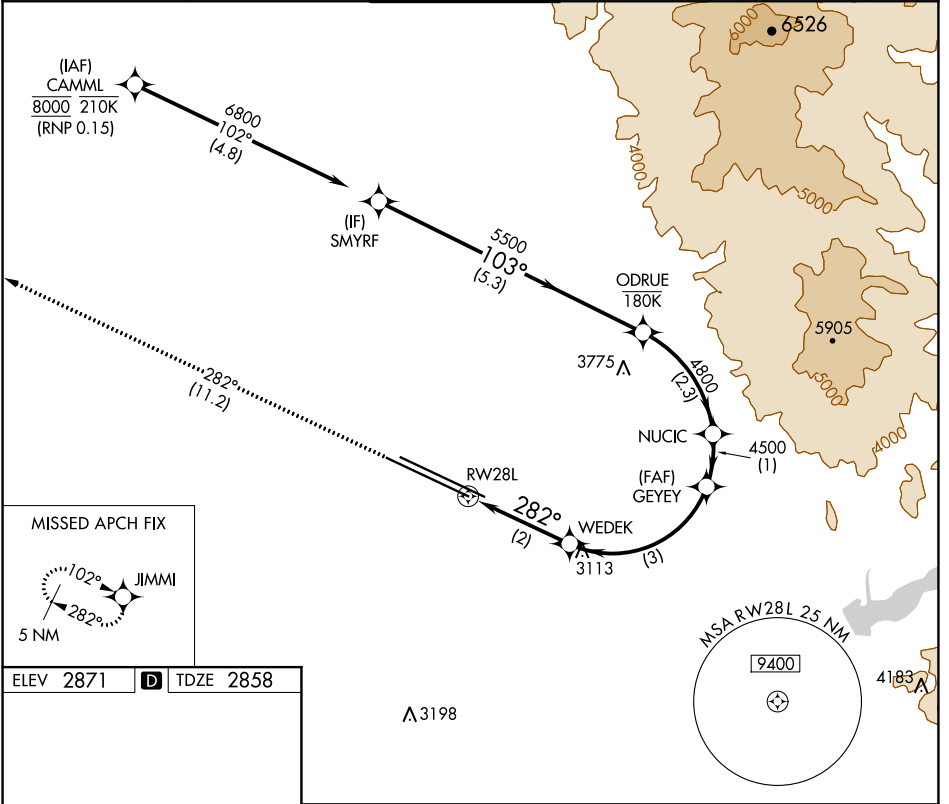
APP CRS	Rwy Idg	<b>9763</b>
<b>282°</b>	TDZE	<b>2858</b>
	Apt Elev	<b>2871</b>

# RNAV (RNP) X RWY 28L

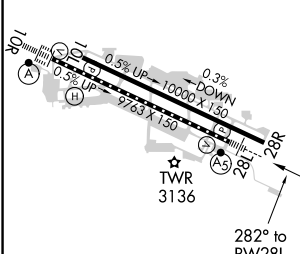
BOISE AIR TRML/GOWEN FLD (BOI)

 	For uncompensated Baro-VNAV systems, procedure NA below -1.4°C (7°F) or above 53°C (128°F). RF required. GPS required.	MALSR	MISSED APPROACH: Climb to 6000 on track 282° to JIMMI and hold, continue climb-in-hold to 6000.

D-ATIS	BIG SKY APP CON	BOISE TOWER	GND CON	CLNC DEL
<b>123.9 290.4</b>	<b>119.6 269.4</b>	<b>118.1 257.8</b>	<b>121.7 348.6</b>	<b>125.9 323.2</b>



ELEV 2871	<b>D</b>	TDZE 2858
-----------	----------	-----------



6000	JIMMI	NUCIC	ODRUE	SMYRF
↑		GEYEE		
tr 282°		WEDEK		
		3548	4500	6800
		4500	4800	5500
		2 NM	3 NM	1 NM
		2.3 NM	5.3 NM	
		282°	103°	
				GP 3.00°
				TCH 50

CATEGORY	A	B	C	D
RNP 0.15 DA	3276/47 418 (500-1)			

**AUTHORIZATION REQUIRED**

REL Rwy 10L  
TDZ/CL Rws 10R and 28L  
HIRL Rws 10L-28R and 10R-28L

NW-1, 22 APR 2021 to 20 MAY 2021

NW-1, 22 APR 2021 to 20 MAY 2021