

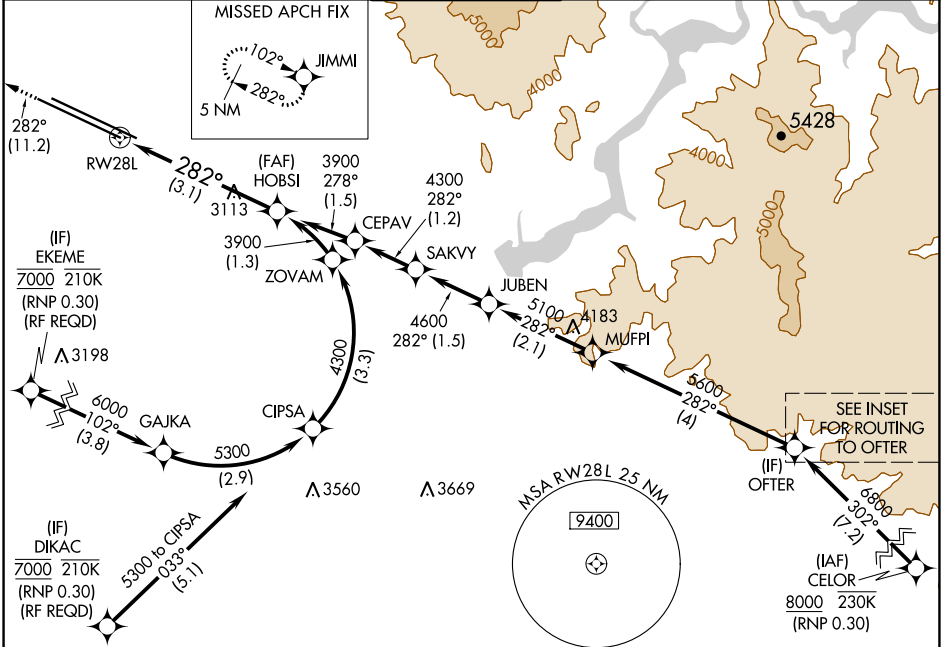
APP CRS	Rwy Idg	<b>9763</b>
<b>282°</b>	TDZE	<b>2858</b>
	Apt Elev	<b>2872</b>

# RNAV (RNP) Z RWY 28L

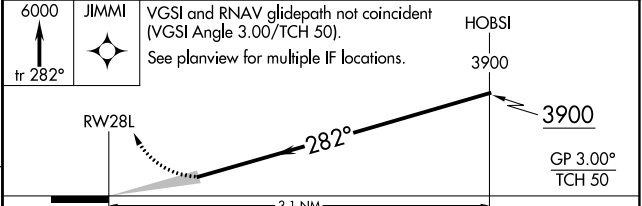
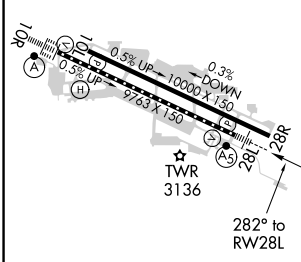
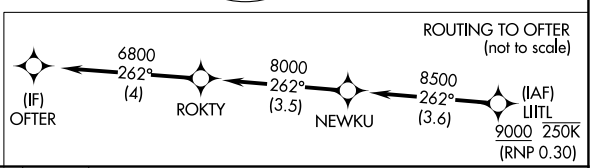
BOISE AIR TRML/GOWEN FLD (BOI)

RNP AR APCH.	MALSR	MISSED APPROACH: Climb to 6000 on track 282° to JIMMI and hold, continue climb-in-hold to 6000.
<p>▼ For uncompensated Baro-VNAV systems, procedure NA below -1.5°C or above 54°C. For inop ALS, increase RNP 0.15 all Cats visibility to RVR 5500 and increase RNP 0.30 all Cats visibility to 1 1/8 SM.</p>		

D-ATIS <b>123.9 290.4</b>	BIG SKY APP CON <b>119.6 269.4</b>	BOISE TOWER <b>118.1 257.8</b>	GND CON <b>121.7 348.6</b>	CLNC DEL <b>125.9 323.2</b>
------------------------------	---------------------------------------	-----------------------------------	-------------------------------	--------------------------------



ELEV 2872	<b>D</b>	TDZE 2858
-----------	----------	-----------



CATEGORY	A	B	C	D
RNP 0.15 DA		3227/35	369 (400-5%)	
RNP 0.30 DA		3319/50	461 (500-1)	

REIL Rwy 10L  
TDZ/CL Rwys 10R and 28L  
HIRL Rwys 10L-28R and 10R-28L

## AUTHORIZATION REQUIRED

NW-1, 22 APR 2021 to 20 MAY 2021

NW-1, 22 APR 2021 to 20 MAY 2021