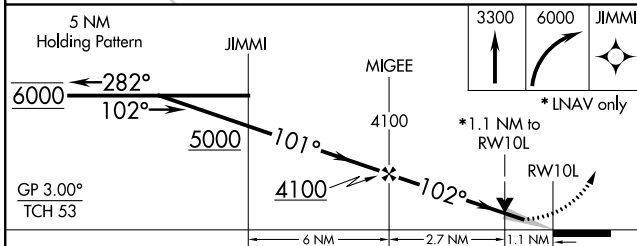
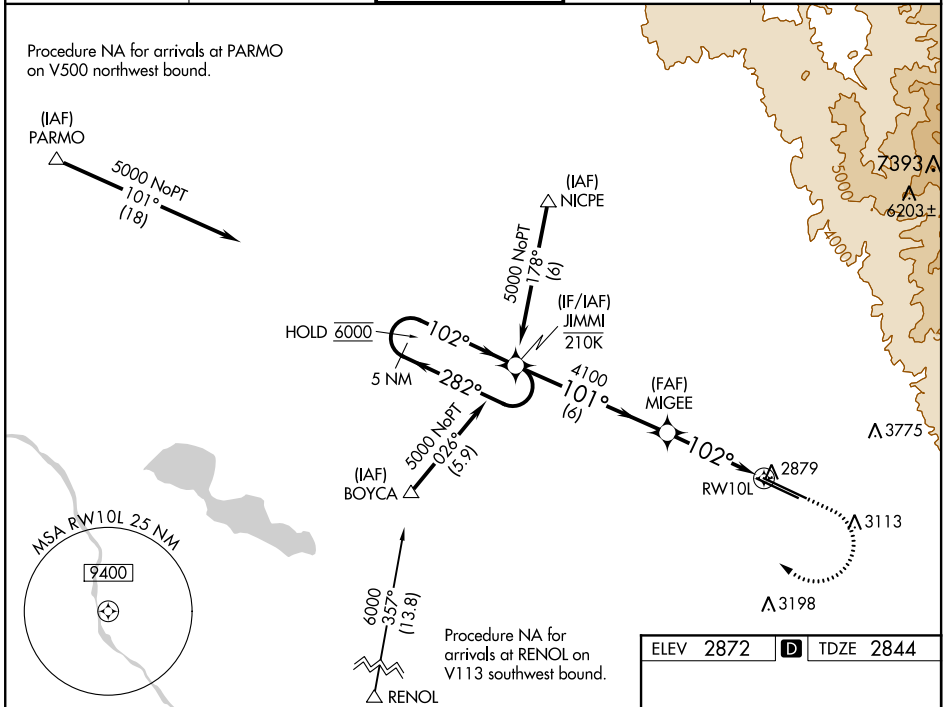


WAAS CH <b>78102</b> W10A	APP CRS <b>102°</b>	Rwy Idg <b>10000</b> TDZE <b>2844</b> Apt Elev <b>2872</b>
---------------------------------	------------------------	--

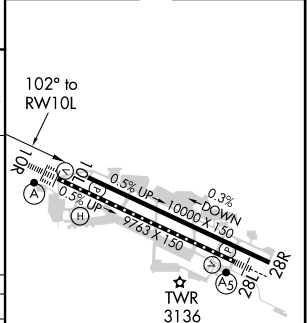
# RNAV (GPS) Y RWY 10L

BOISE AIR TRML/GOWEN FLD (BOI)

RNP APCH.		MISSED APPROACH: Climb to 3300 then climbing right turn to 6000 direct JIMMI and hold, continue climb-in-hold to 6000.				
<p><b>▼</b> Circling NA north of Rwy 10L-28R. <b>▲</b> For uncompensated Baro-VNAV systems, LNAV/VNAV NA below -12°C or above 54°C.</p>		D-ATIS <b>123.9 290.4</b>	BIG SKY APP CON <b>119.6 269.4</b>	BOISE TOWER <b>118.1 257.8</b>	GND CON <b>121.7 348.6</b>	CLNC DEL <b>125.9 323.2</b>



ELEV 2872	<b>D</b> TDZE 2844
-----------	--------------------



CATEGORY	A	B	C	D
LPV DA	3094-7/8		250 (300-7/8)	
LNAV/VNAV DA	3135-1		291 (300-1)	
LNAV MDA	3240-1 396 (400-1)		3240-1 3/8 396 (400-1 1/8)	
<b>C</b> CIRCLING	3440-1 568 (600-1)		3740-2 1/2 868 (900-2 1/2)      3820-3 948 (1000-3)	

REIL Rwy 10L  
TDZ/CL Rwys 10R and 28L  
HIRL Rwys 10L-28R and 10R-28L

NW-1, 22 APR 2021 to 20 MAY 2021

NW-1, 22 APR 2021 to 20 MAY 2021