

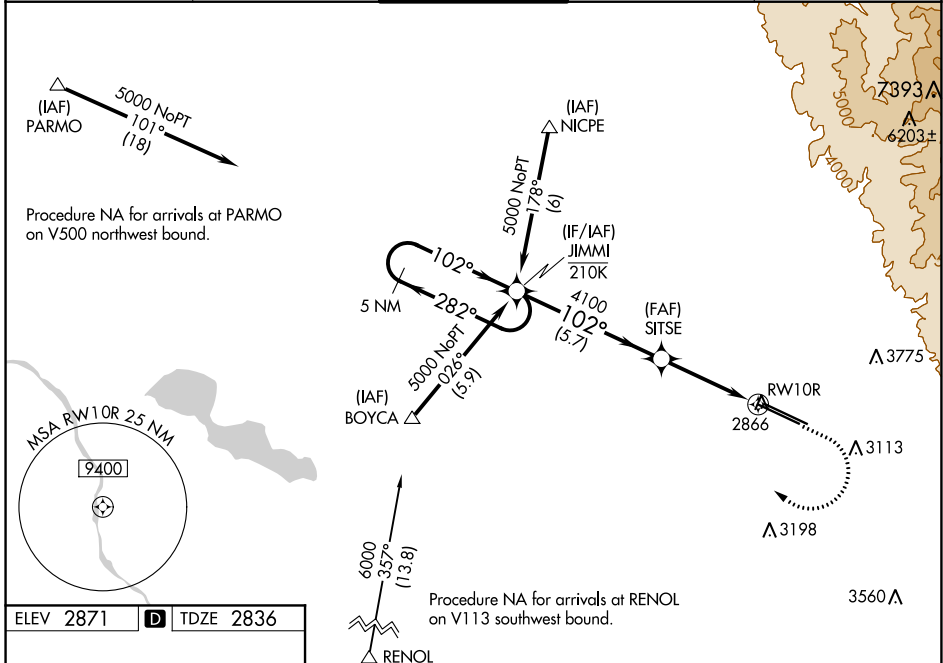
WAAS CH <b>40203</b> <b>W10B</b>	APP CRS <b>102°</b>	Rwy Idg TDZE Apt Elev	<b>9763</b> <b>2836</b> <b>2871</b>
--	------------------------	-----------------------------	---

# RNAV (GPS) Y RWY 10R

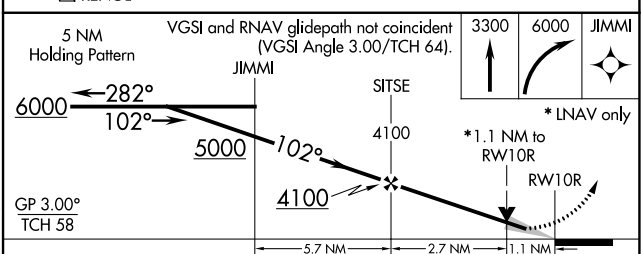
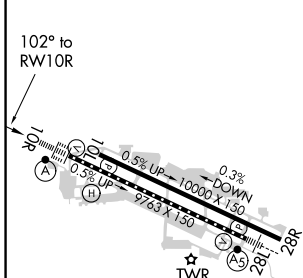
BOISE AIR TRML/GOWEN FLD (BOI)

<p><b>⚠</b> For uncompensated Baro-VNAV systems, LNAV/VNAV NA below -12°C (11°F) or above 54°C (130°F). DME/DME RNP-0.3 NA. Circling NA north of Rwy 10L-28R. For inop ALS, increase LPV Cat E visibility to RVR 4000, LNAV/VNAV all Cats and LNAV Cats C/D/E visibility to RVR 6000.</p>	<p>ALS-F-2</p>	<p>MISSED APPROACH: Climb to 3300 then climbing right turn to 6000 direct JIMMI and hold, continue climb-in-hold to 6000.</p>

D-ATIS <b>123.9 290.4</b>	BIG SKY APP CON <b>119.6 269.4</b>	<b>BOISE TOWER</b> <b>118.1 257.8</b>	GND CON <b>121.7 348.6</b>	CLNC DEL <b>125.9 323.2</b>
------------------------------	---------------------------------------	--	-------------------------------	--------------------------------



ELEV 2871	<b>D</b>	TDZE 2836
-----------	----------	-----------



CATEGORY	A	B	C	D	E
LPV DA		3036/18	200 (200-½)		
LNAV/VNAV DA		3182/40	346 (400-¾)		
LNAV MDA	3240/24	404 (400-½)	3240/40	404 (400-¾)	
<b>C</b> CIRCLING	3440-1	569 (600-1)	3740-2½ 869 (900-2½)	3820-3 949 (1000-3)	3880-3 1009 (1100-3)

NW-1, 22 APR 2021 to 20 MAY 2021

NW-1, 22 APR 2021 to 20 MAY 2021