

VORTAC BOI <b>113.3</b> Chan <b>80</b>	APP CRS <b>101°</b>	Rwy Idg TDZE Apt Elev	<b>10000</b> <b>2844</b> <b>2872</b>
--	------------------------	-----------------------------	--

# VOR or TACAN RWY 10L

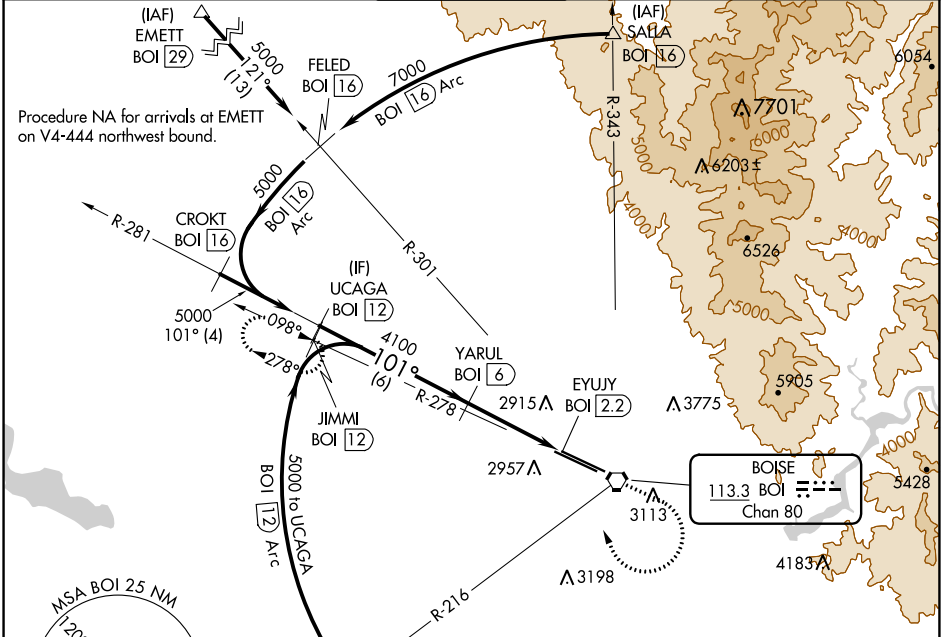
BOISE AIR TRML/GOWEN FLD (BOI)

DME required.

**⚠** Circling NA north of Rwy 10L-28R.

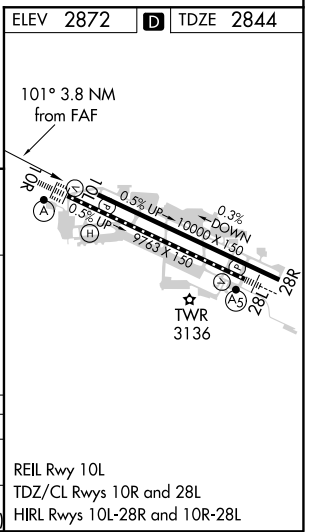
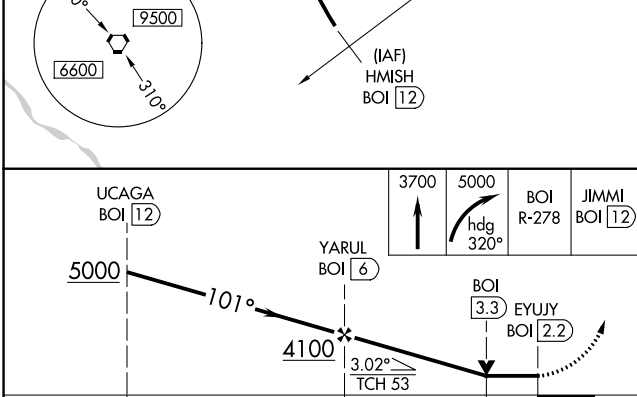
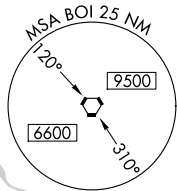
MISSED APPROACH: Climb to 3700 then climbing right turn to 5000 on heading 320° and BOI VORTAC R-278 to JIMMI/12 DME and hold.

D-ATIS <b>123.9 290.4</b>	BIG SKY APP CON <b>119.6 269.4</b>	<b>BOISE TOWER</b> <b>118.1 257.8</b>	GND CON <b>121.7 348.6</b>	CLNC DEL <b>125.9 323.2</b>
------------------------------	---------------------------------------	--	-------------------------------	--------------------------------



NW-1, 22 APR 2021 to 20 MAY 2021

NW-1, 22 APR 2021 to 20 MAY 2021



CATEGORY	A	B	C	D	E
S-10L	3240-1	396 (400-1)	3240-1½	396 (400-1½)	
<b>C</b> CIRCLING	3440-1	568 (600-1)	3740-2½ 868 (900-2½)	3820-3 948 (1000-3)	3880-3 1008 (1100-3)

REIL Rwy 10L  
TDZ/CL Rwys 10R and 28L  
HIRL Rwys 10L-28R and 10R-28L