

CHARLESTON, SOUTH CAROLINA

HI-VOR/DME or TACAN RWY 15

VORTAC CHS 113.5 Chan 82	APCH CRS 157°	Rwy ldg TDZE 43 Arprt Elev 46	9001
--	-------------------------	---	-------------

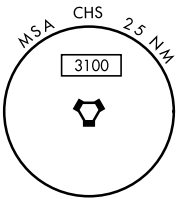
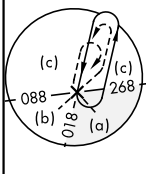
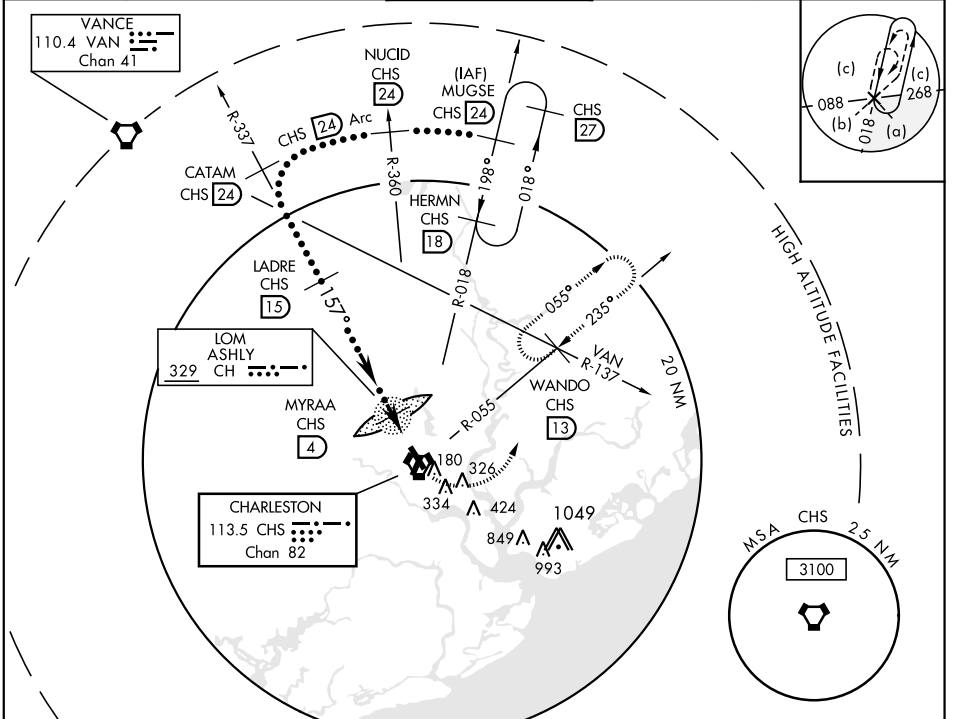
JAL-76 [USAF]

CHARLESTON AFB/INTL (KCHS)

ALSF-2
* When ALS inop, increase CAT D RVR to 6000, vis to 1½, CAT E vis to 1½.

MISSED APPROACH: Climb to 500 then climbing left turn to 2000 via CHS R-055 to WANDO INT/CHS 13 DME and hold.

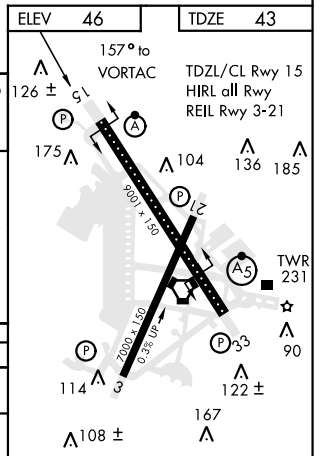
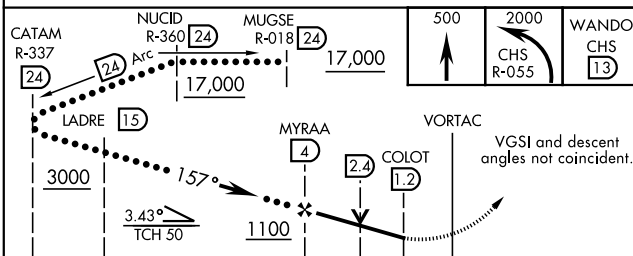
ATIS 124.75	CHARLESTON APP CON 120.7 306.925 (151° - 330°) 119.3 379.925 (331° - 150°)	CHARLESTON TOWER 126.0 239.0	GND CON 121.9 348.6	CLNC DEL 127.325 291.65
-----------------------	--	--	-------------------------------	-----------------------------------



SE-2, 22 APR 2021 to 20 MAY 2021

SE-2, 22 APR 2021 to 20 MAY 2021

EMERG SAFE ALT 100 NM 3200



CATEGORY	C	D	E
S-15*	460/40 417 (500-¾)	460/50 417	(500-1)
CIRCLING	540-1½ 495 (500-1½)	600-2 555 (600-2)	740-2½ 695 (700-2½)

CHARLESTON, SOUTH CAROLINA

32°54'N-80°02'W

CHARLESTON AFB/INTL (KCHS)

Amdt 4 18032

HI-VOR/DME or TACAN RWY 15