

PLFMD TWO DEPARTURE (RNAV)

SE-2, 22 APR 2021 to 20 MAY 2021

TOP ALTITUDE:
4000

- ATIS 124.75
- CUNCLDEL 127.325 291.65
- CPDLC
- GND CON 121.9 348.6
- CHARLESTON TOWER 126.0 239.0
- CHARLESTON DEP CON 120.7 306.925

NOTE: Transponder code will be issued by Charleston clearance delivery.

NOTE: If unable to accept climb rate, advise ATC on initial contact.

NOTE: DME/DME/IRU or GPS Required.

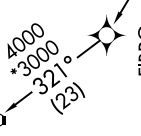
NOTE: RNAV 1.

NOTE: Radar Required for non-GPS equipped aircraft.

NOTE: For non-GPS equipped aircraft: CHS and VAN

DMEs must be operational for Takeoff Rwy 15; CAE, IRG, and SAV DMEs must be operational for DUBLIN Transition. CAE DME must be operational for COLLIERS Transition.

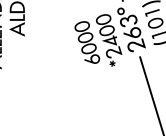
COLLIERS
IRG



FIBRO



ALLENDALE
ALD



PLFMD



DUBLIN
DBN



TAKEOFF MINIMUMS:
Rwys 15, 33: Standard.
Rwys 3, 21: Standard with minimum climb of 500' per NM to 560.

NOTE: Chart not to scale.

DEPARTURE ROUTE DESCRIPTION

TAKEOFF RWY 3: Climb heading 031° to 560 MSL, then left turn direct BRYSE, then on depicted route to PLFMD, thence. . . .

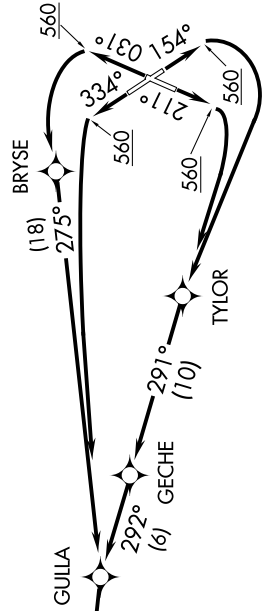
TAKEOFF RWY 15: Climb heading 154° to 560 MSL, then right turn direct TYLOR, then on depicted route to PLFMD, thence. . . .

TAKEOFF RWY 21: Climb heading 211° to 560 MSL, then right turn direct TYLOR, then on depicted route to PLFMD, thence. . . .

TAKEOFF RWY 33: Climb heading 334° to 560 MSL, then left turn direct GULLA, then on depicted route to PLFMD, thence. . . .

. . . . on assigned transition, maintain 4000. Expect clearance to filed altitude/flight level within ten (10) minutes after departure.

ALLENDALE TRANSITION (PLFMD2.ALD):
COLLIERS TRANSITION (PLFMD2.IRG):
DUBLIN TRANSITION (PLFMD2.DBN):



SE-2, 22 APR 2021 to 20 MAY 2021