

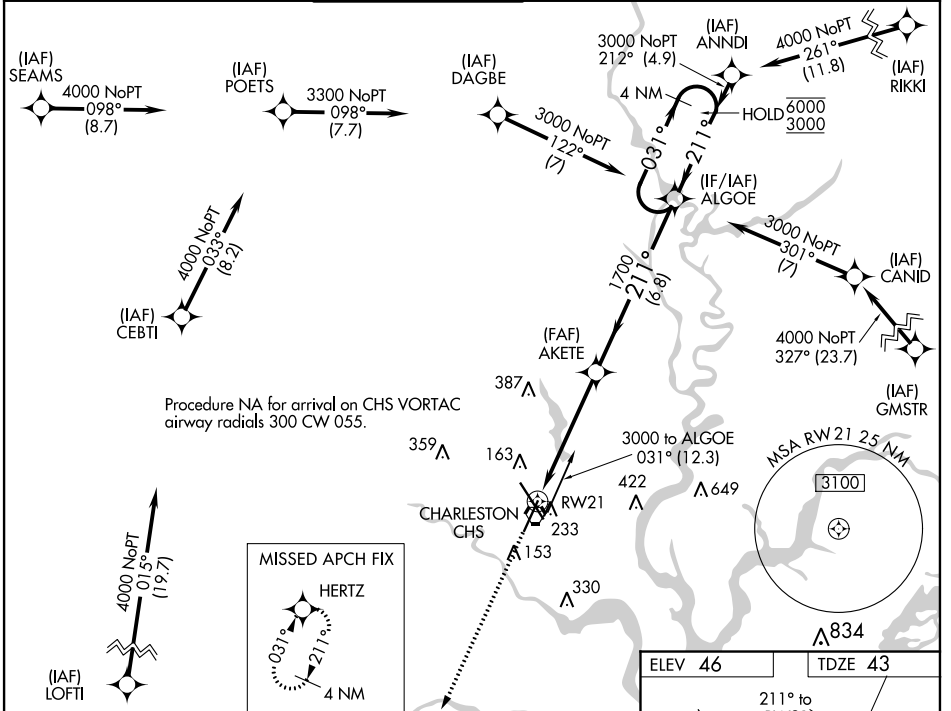
WAAS CH <b>40499</b> <b>W21A</b>	APP CRS <b>211°</b>	Rwy Idg TDZE Apt Elev	<b>7000</b> <b>43</b> <b>46</b>
--	------------------------	-----------------------------	---------------------------------------

# RNAV (GPS) Y RWY 21

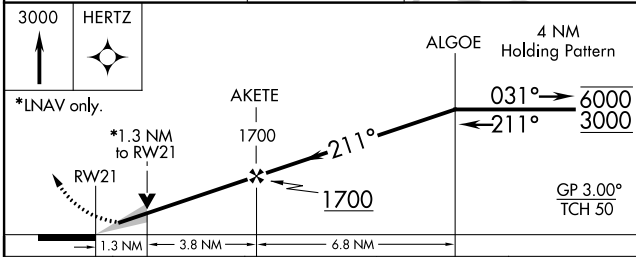
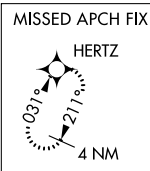
CHARLESTON AFB/INTL (CHS)

RNP APCH.	MISSED APPROACH: Climb to 3000 direct HERTZ and hold, continue climb-in-hold to 3000.		
<p>▼ For uncompensated Baro-VNAV systems, LNAV/VNAV NA below -5°C or above 54°C.</p>			

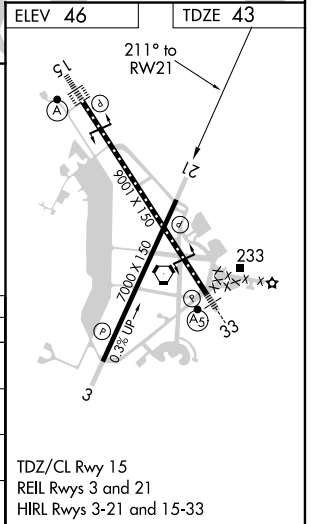
ATIS <b>124.75</b>	CHARLESTON APP CON <b>120.7 306.925</b>	CHARLESTON TOWER <b>126.0 239.0</b>	GND CON <b>121.9 348.6</b>	CLNC DEL <b>127.325 291.65</b>	CPDLC
-----------------------	--	--	-------------------------------	-----------------------------------	-------



Procedure NA for arrival on CHS VORTAC airway radials 300 CW 055.



CATEGORY	A	B	C	D
LPV DA		293-3/4	250 (300-3/4)	
LNAV/VNAV DA		382-1	339 (400-1)	
LNAV MDA	500-1	457 (500-1)	500-1 3/8	457 (500-1 3/8)
CIRCLING	540-1	494 (500-1)	600-1 1/2 554 (600-1 1/2)	740-2 1/4 694 (700-2 1/4)



TDZ/CL Rwy 15  
REIL Rwy 3 and 21  
HIRL Rwy 3-21 and 15-33

SE-2, 22 APR 2021 to 20 MAY 2021

SE-2, 22 APR 2021 to 20 MAY 2021