

LOC/DME I-LPI	APP CRS	Rwy Idg	13501
109.1	172°	TDZE	6187
Chan 28		Apt Elev	6187

ILS RWY 17L (SA CAT I & II)

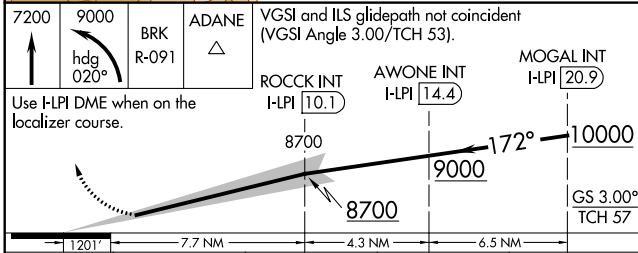
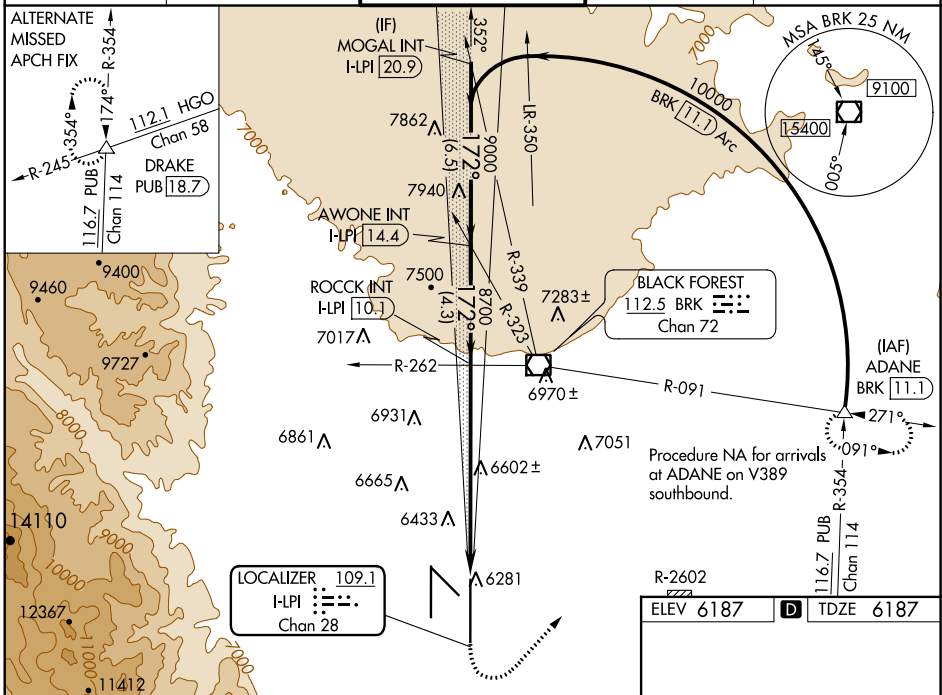
CITY OF COLORADO SPRINGS MUNI (COS)

DME or RADAR required for procedure entry.

⚠ Simultaneous approach authorized with Rwy 17R.
⚠ SA CAT I: Required specific OPSPEC, MSPEC, or LOA approval and use of HUD to DH. SA CAT II: Reduced Lighting: Requires specific OPSPEC, MSPEC, or LOA approval and use of autoland or HUD to touchdown.

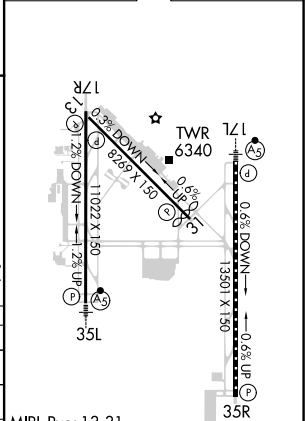
MALS MISSED APPROACH: Climb to 7200 then climbing left turn to 9000 on heading 020° and on BRK VOR/DME R-091 to ADANE INT/BRK VOR/DME 11.1 DME and hold.

ATIS	SPRINGS APP CON	SPRINGS TOWER	GND CON	CLNC DEL
125.0 254.3	124.0 257.875	119.9 360.6	121.7 348.6	134.45 363.125



CATEGORY	A	B	C	D
S-ILS 17L	SA CAT I RA 169/14 150 DA 6337			
S-ILS 17L	SA CAT II RA 105/16 100 DA 6287			

R-2602	ELEV 6187	D TDZE 6187
--------	-----------	--------------------



MIRL Rwy 13-31
 HIRL Rwys 17R-35L and 17L-35R
 REIL Rwys 13, 17R, 31 and 35R
 TDZ/CL Rwys 17L and 35R

SA CATEGORY I & II ILS SPECIAL AIRCREW & AIRCRAFT CERTIFICATION REQUIRED

SW-1, 22 APR 2021 to 20 MAY 2021

SW-1, 22 APR 2021 to 20 MAY 2021