

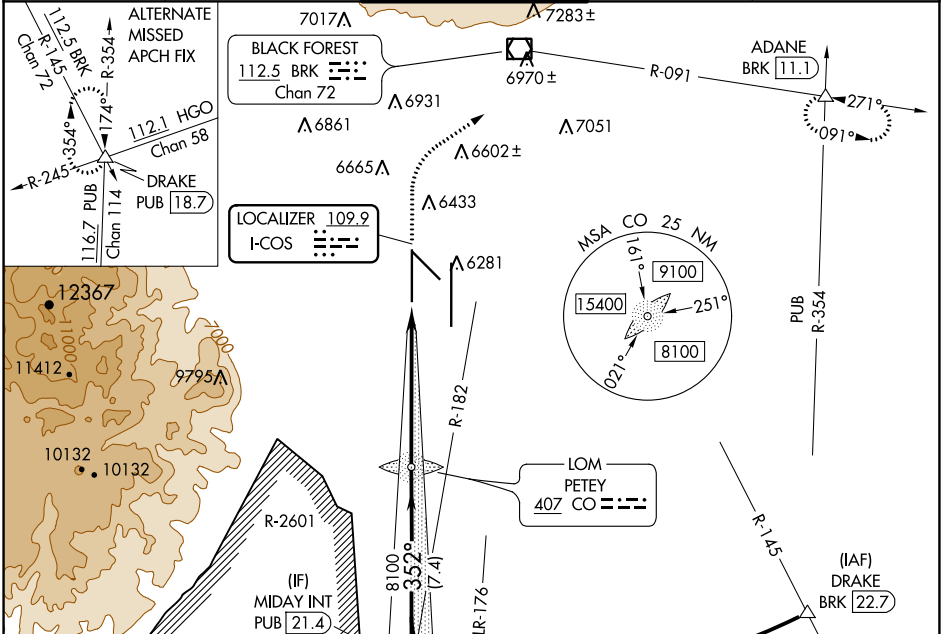
LOC I-COS <b>109.9</b>	APP CRS <b>352°</b>	Rwy Idg TDZE Apt Elev	<b>11022</b> <b>6075</b> <b>6187</b>
---------------------------	------------------------	-----------------------------	--

# ILS RWY 35L (SA CAT II)

CITY OF COLORADO SPRINGS MUNI (COS)

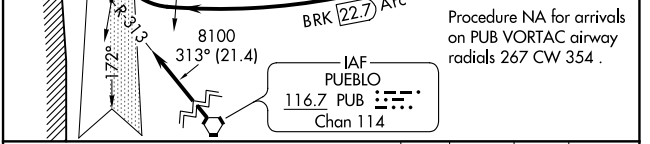
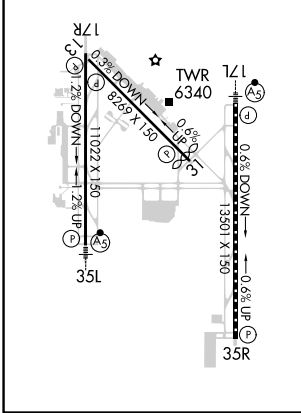
	RADAR monitoring required when R-2601 in use. Reduced lighting; requires specific OPSPEC, MSPEC, or LOA approval and use of autoland or HUD to touchdown.	MALSRL 	MISSED APPROACH: Climb to 6700 then climbing right turn to 9000 on heading 047° and on BRK VOR/DME R-091 to ADANE INT/BRK 11.1 DME and hold.
--	---	------------	---

ATIS <b>125.0 254.3</b>	SPRINGS APP CON <b>124.0 257.875</b>	SPRINGS TOWER <b>119.9 360.6</b>	GND CON <b>121.7 348.6</b>	CLNC DEL <b>134.45 363.125</b>
----------------------------	---	-------------------------------------	-------------------------------	-----------------------------------



ELEV 6187	<b>D</b>	TDZE 6075
-----------	----------	-----------

HIRL Rwy 17R-35L and 17L-35R  
 REIL Rwy 13, 17R, 31 and 35R  
 TDZ/CL Rwy 17L and 35R  
 MIRL Rwy 13-31



MIDAY INT PUB 21.4	PETEY CO LOM	6700	9000	BRK R-091	ADANE △
Procedure NA for arrivals on PUB VORTAC airway radials 267 CW 354.					
VGSi and ILS glidepath not coincident (VGSi Angle 3.00/TCH 71).					
GS 3.00° TCH 51					
8100 — 352° — 8100					
7.4 NM      6 NM      916'					
CATEGORY	A	B	C	D	
S-ILS 35L	RA 123/12 100 DA 6175				

## SA CATEGORY II ILS - SPECIAL AIRCREW & AIRCRAFT CERTIFICATION REQUIRED

SW-1, 22 APR 2021 to 20 MAY 2021

SW-1, 22 APR 2021 to 20 MAY 2021