

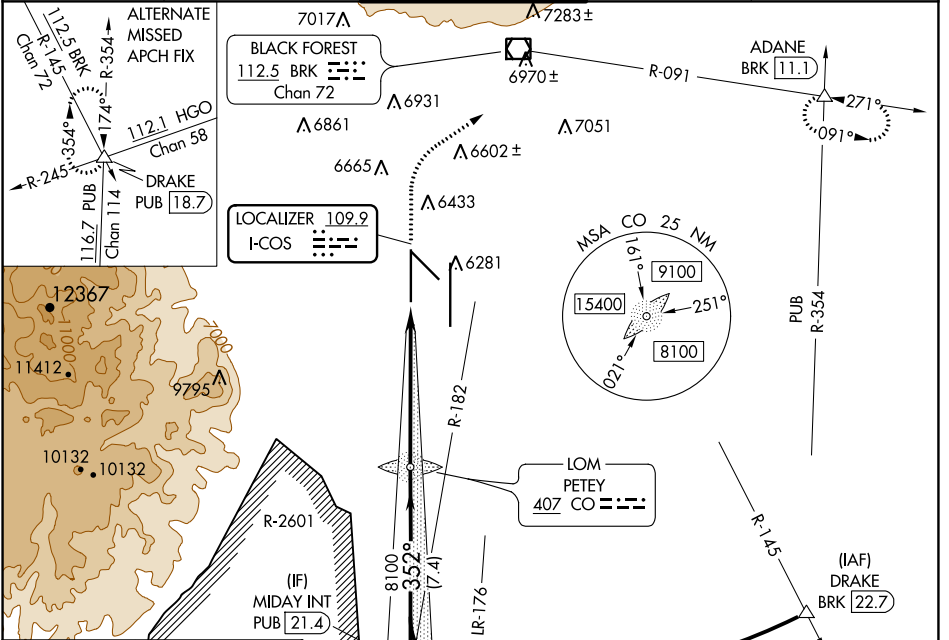
LOC I-COS <b>109.9</b>	APP CRS <b>352°</b>	Rwy Idg TDZE Apt Elev <b>11022</b> <b>6075</b> <b>6187</b>
---------------------------	------------------------	---

# ILS or LOC RWY 35L

CITY OF COLORADO SPRINGS MUNI (COS)

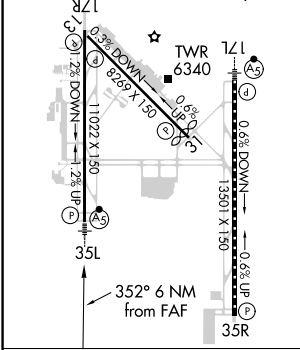
<p>RADAR monitoring required when R-2601 in use. * RVR 1800 authorized with the use of FD or AP or HUD to DA.</p>	<p>MALSR</p>	<p>MISSED APPROACH: Climb to 6700 then climbing right turn to 9000 on heading 047° and on BRK VOR/DME R-091 to ADANE INT/BRK 11.1 DME and hold.</p>
---	--------------	---

<p>ATIS <b>125.0 254.3</b></p>	<p>SPRINGS APP CON <b>124.0 257.875</b></p>	<p>SPRINGS TOWER <b>119.9 360.6</b></p>	<p>GND CON <b>121.7 348.6</b></p>	<p>CLNC DEL <b>134.45 363.125</b></p>
------------------------------------	---	---	---------------------------------------	---

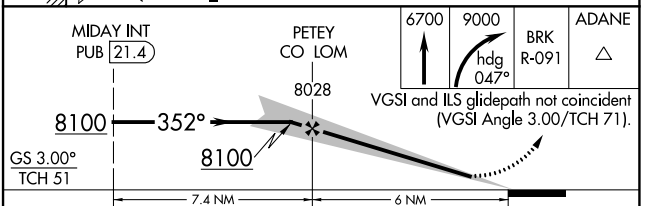


ELEV 6187	<b>D</b>	TDZE 6075
-----------	----------	-----------

HIRL Rwy 17R-35L and 17L-35R  
REIL Rwy 13, 17R, 31 and 35R  
TDZ/CL Rwy 17L and 35R  
MIRL Rwy 13-31



FAF to MAP 6 NM					
Knots	60	90	120	150	180
Min:Sec	6:00	4:00	3:00	2:24	2:00



GS 3.00° TCH 51	7.4 NM		6 NM	
CATEGORY	A	B	C	D
S-ILS 35L*	6275/24		200 (100-½)	
S-LOC 35L	6540/24	465 (400-½)	6540/50	465 (400-1)
<b>C</b> CIRCLING	6740-1 553 (600-1)	6800-1 613 (700-1)	7040-2½ 853 (900-2½)	7260-3 1073 (1100-3)

SW-1, 22 APR 2021 to 20 MAY 2021

SW-1, 22 APR 2021 to 20 MAY 2021