

LOC/DME I-AHI	APP CRS	Rwy Idg	13501
109.1	352°	TDZE	6118
Chan 28		Apt Elev	6187

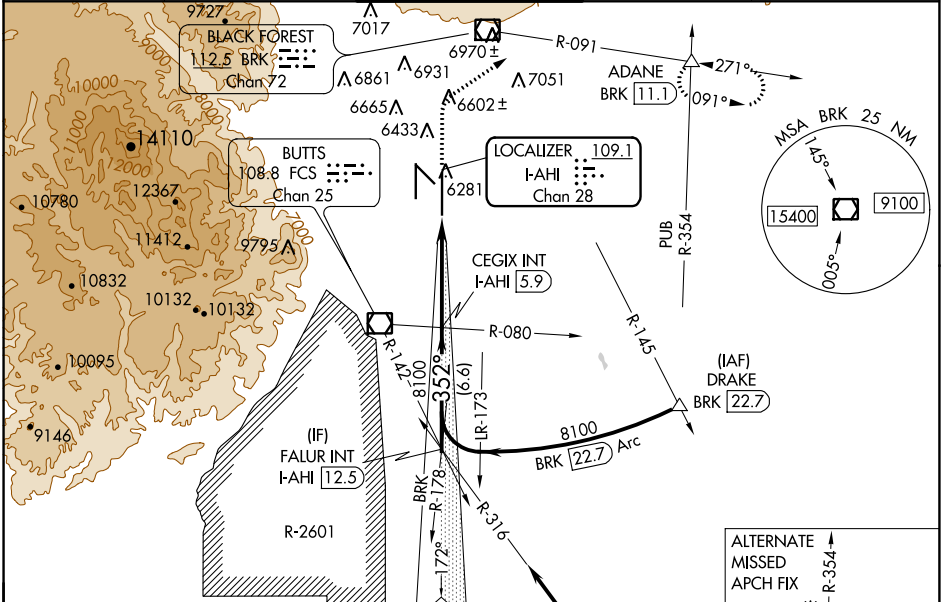
ILS or LOC RWY 35R

CITY OF COLORADO SPRINGS MUNI (COS)

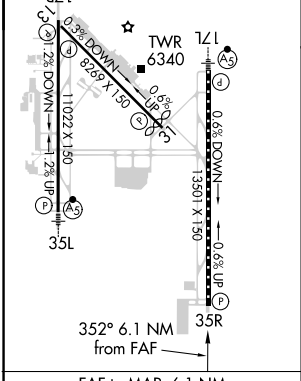
⚠ RADAR required when R-2601 in use.

MISSED APPROACH: Climb to 6700 then climbing right turn to 9000 on heading 047° and on BRK VOR/DME R-091 to ADANE INT/BRK 11.1 DME and hold.

ATIS 125.0 254.3	SPRINGS APP CON 124.0 257.875	SPRINGS TOWER 119.9 360.6	GND CON 121.7 348.6	CLNC DEL 134.45 363.125
----------------------------	---	-------------------------------------	-------------------------------	-----------------------------------



ELEV 6187	D TDZE 6118
MIRL Rwy 13-31	MIRL Rwy 13-31
HIRL Rwys 17R-35L and 17L-35R	REIL Rwys 13, 17R, 31 and 35R
REIL Rwys 13, 17R, 31 and 35R	TDZ/CL Rwys 17L and 35R



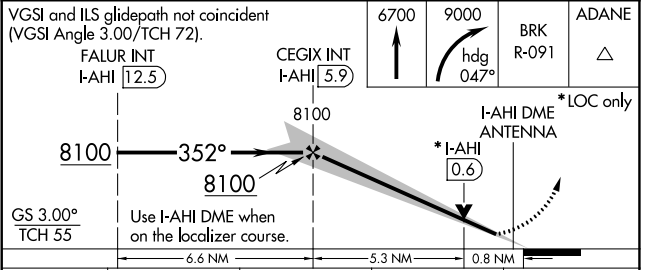
Procedure NA for arrival on PUB VORTAC airway radials 267 CW 354.

ALTERNATE MISSED APCH FIX

IAF PUEBLO 116.7 PUB Chan 114

DRAKE PUB 118.7

112.1 HGO Chan 58



CATEGORY	A	B	C	D
S-ILS 35R	6318/40 200 (200-¾)			
S-LOC 35R	6420/55	302 (300-1)	6420/45	302 (300-¾)
C CIRCLING	6740-1 553 (600-1)	6800-1 613 (700-1)	7040-2½ 853 (900-2½)	7260-3 1073 (1100-3)

SW-1, 22 APR 2021 to 20 MAY 2021

SW-1, 22 APR 2021 to 20 MAY 2021