

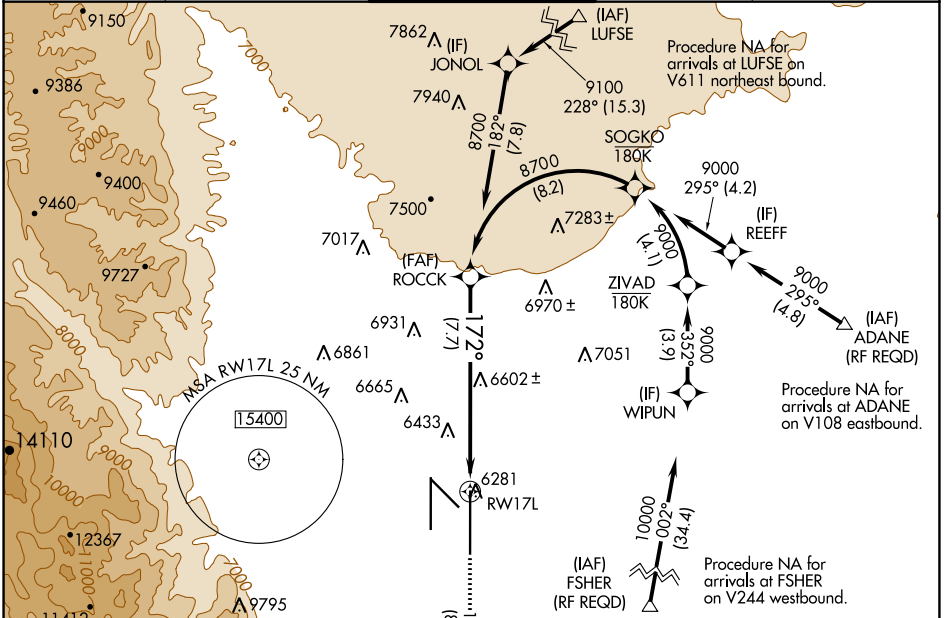
APP CRS 172°	Rwy Idg TDZE Apt Elev	13501 6187 6187
------------------------	-----------------------------	--

RNAV (RNP) Z RWY 17L

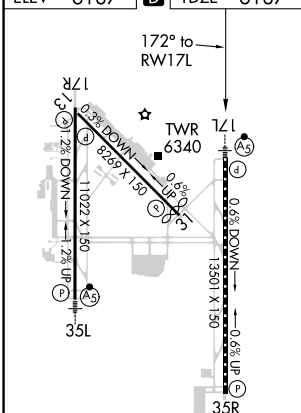
CITY OF COLORADO SPRINGS MUNI (COS)

<p>For uncompensated Baro-VNAV systems, procedure NA below -21°C (-5°F) or above 44°C (112°F). GPS required.</p>		<p>MISSED APPROACH: Climb to 9000 on track 172° to CEGIX and on track 130° to JEMKI and on track 084° to DRAKE and hold.</p>

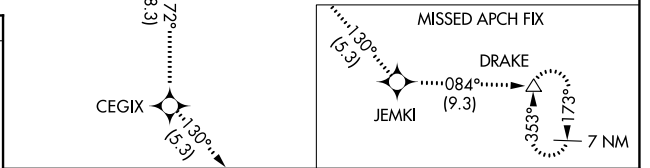
ATIS 125.0 254.3	SPRINGS APP CON 124.0 257.875	SPRINGS TOWER 119.9 360.6	GND CON 121.7 348.6	CLNC DEL 134.45 363.125
----------------------------	---	-------------------------------------	-------------------------------	-----------------------------------



ELEV 6187	D	TDZE 6187
-----------	----------	-----------



MIRL Rwy 13-31
HIRL Rwys 17R-35L and 17L-35R
REIL Rwys 13, 17R, 31 and 35R
TDZ/CL Rwys 17L and 35R



9000	CEGIX	tr 130°	JEMKI	tr 084°	DRAKE	ROCCK	8700
tr 172°							
<p>VGSI and RNAV glidepath not coincident (VGSI Angle 3.00/TCH 53).</p>							
<p>RW17L</p>							
<p>See planview for multiple IF locations.</p>							
<p>GP 3.00° TCH 57</p>							

CATEGORY	A	B	C	D
RNP 0.15 DA		6557/40	370 (400-¾)	
RNP 0.25 DA		6644/50	457 (500-1)	
RNP 0.30 DA		6920-2	733 (800-2)	

AUTHORIZATION REQUIRED

SW-1, 22 APR 2021 to 20 MAY 2021

SW-1, 22 APR 2021 to 20 MAY 2021