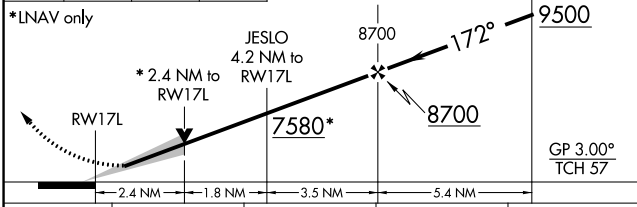
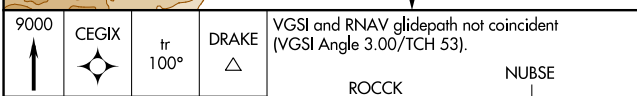
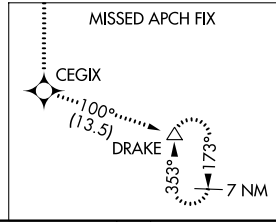
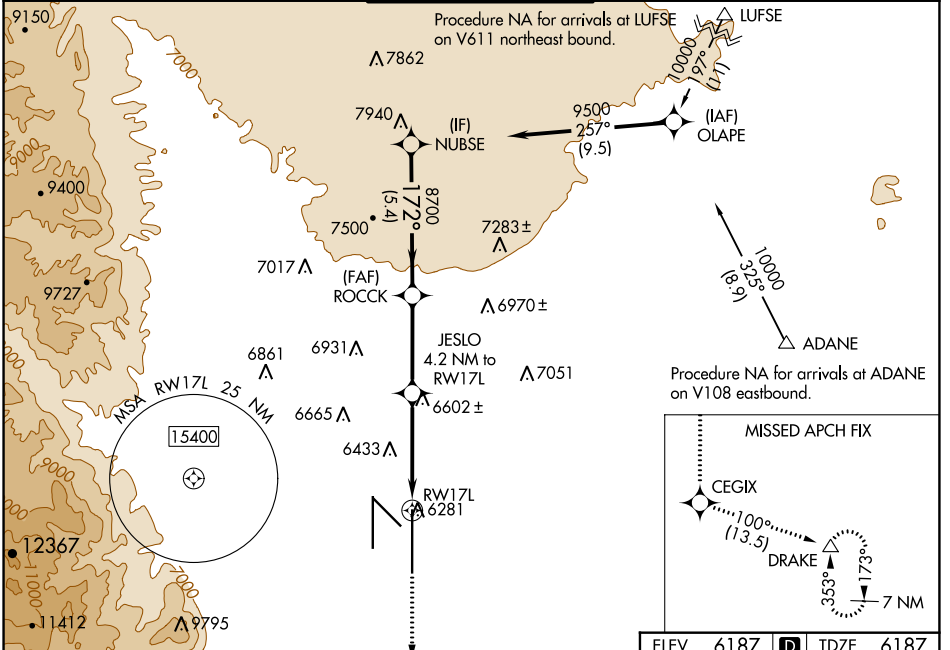


WAAS CH 69618 W17A	APP CRS 172°	Rwy Idg TDZE 6187 Apt Elev 6187	13501
----------------------------------------	------------------------	-----------------------------------------------------	--------------

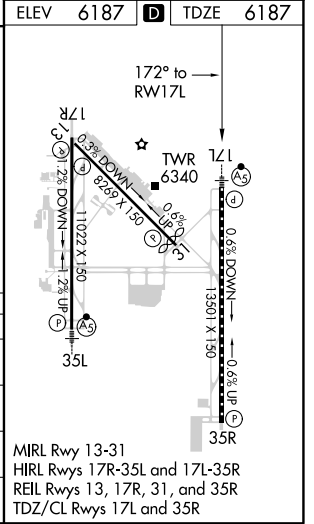
RNAV (GPS) Y RWY 17L

CITY OF COLORADO SPRINGS MUNI (COS)

<p>▼ For uncompensated Baro-VNAV systems, LNAV/VNAV NA below -21°C (-5°F) or above 44°C (112°F). DME/DME RNP-0.3 NA. For inop MALSRL, increase LNAV Cat C/D visibility to 1/2 SM.</p>		<p>MALSRL</p>	<p>MISSED APPROACH: Climb to 9000 direct CEGIX and on track 100° to DRAKE and hold.</p>	
ATIS 125.0 254.3	SPRINGS APP CON 124.0 257.875	SPRINGS TOWER 119.9 360.6	GND CON 121.7 348.6	CLNC DEL 134.45 363.125



CATEGORY	A	B	C	D
LPV DA		6387/18	200 (200-1/2)	
LNAV/VNAV DA		6602/45	415 (500-3/8)	
LNAV MDA	7000/24 813 (900-1/2)	7000/40 813 (900-3/4)	7000-17/8	813 (900-17/8)
C CIRCLING	7000-11/4	813 (900-11/4)	7040-2 1/2 853 (900-2 1/2)	7260-3 1073 (1100-3)



SW-1, 22 APR 2021 to 20 MAY 2021

SW-1, 22 APR 2021 to 20 MAY 2021