

WAAS CH <b>72800</b> <b>W17B</b>	APP CRS <b>172°</b>	Rwy Idg <b>11022</b> TDZE <b>6177</b> Apt Elev <b>6187</b>
--	------------------------	--

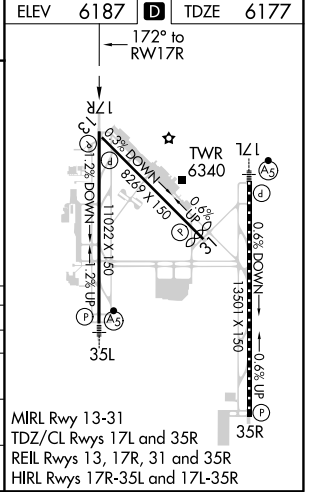
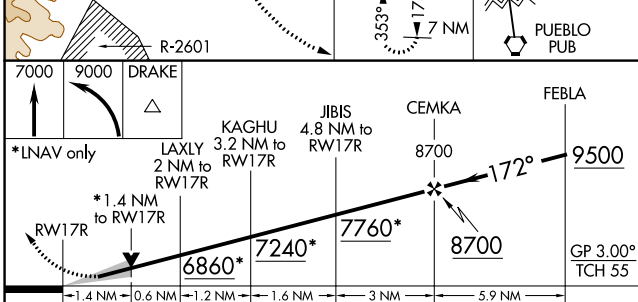
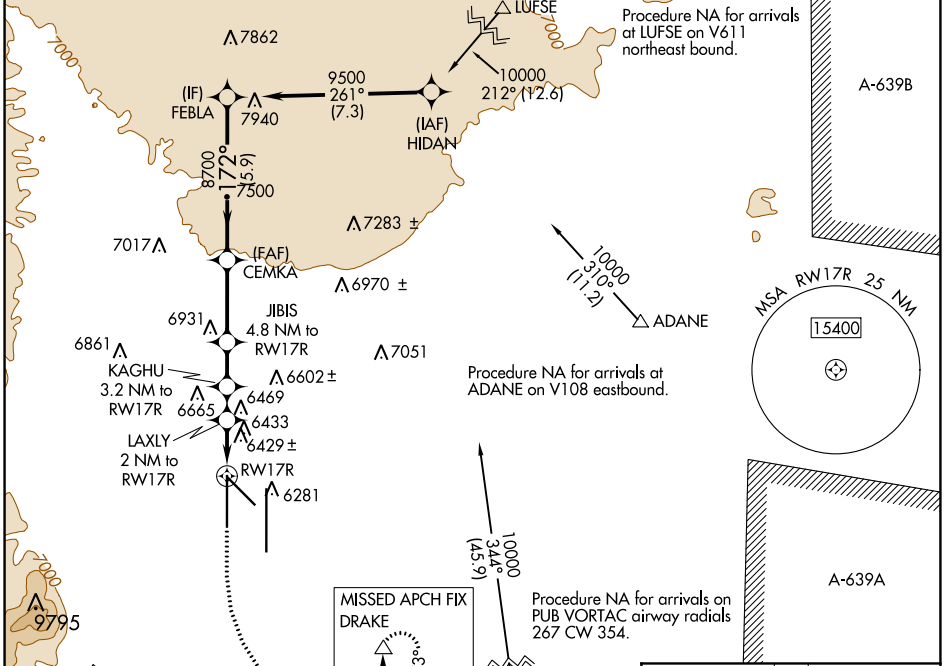
# RNAV (GPS) Y RWY 17R

CITY OF COLORADO SPRINGS MUNI (COS)

For uncompensated Baro-VNAV systems, LNAV/VNAV NA below -21°C (-5°F) or above 54°C (130°F), DME/DME RNP-0.3 NA. Simultaneous approach authorized with ILS or LOC RWY 17L and ILS RWY 17L (SA CAT I). LNAV procedure NA during simultaneous operations. Use of FD or AP providing RNAV track guidance required during simultaneous operations.

**MISSED APPROACH:** Climb to 7000 then climbing left turn to 9000 direct DRAKE and hold.

ATIS <b>125.0 254.3</b>	SPRINGS APP CON <b>124.0 257.875</b>	SPRINGS TOWER <b>119.9 360.6</b>	GND CON <b>121.7 348.6</b>	CLNC DEL <b>134.45 363.125</b>
----------------------------	---	-------------------------------------	-------------------------------	-----------------------------------



CATEGORY	A	B	C	D
LPV DA	6377/40		200 (200-¾)	
LNAV/VNAV DA	6752-2		575 (600-2)	
LNAV MDA	6680/55	503 (500-1)	6680-1¾	503 (500-1¾)
<b>C</b> CIRCLING	6740-1 553 (600-1)	6800-1 613 (700-1)	7040-2½ 853 (900-2½)	7260-3 1073 (1100-3)

SW-1, 22 APR 2021 to 20 MAY 2021

SW-1, 22 APR 2021 to 20 MAY 2021