

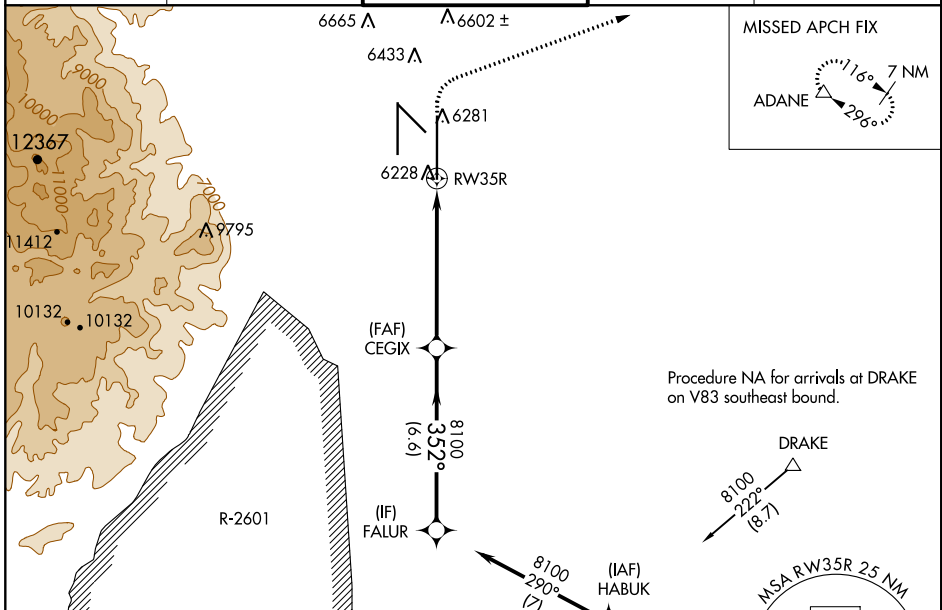
WAAS CH 53602 W35B	APP CRS 352°	Rwy Idg TDZE Apt Elev	13501 6118 6187
--	------------------------	-----------------------------	--

RNAV (GPS) Y RWY 35R

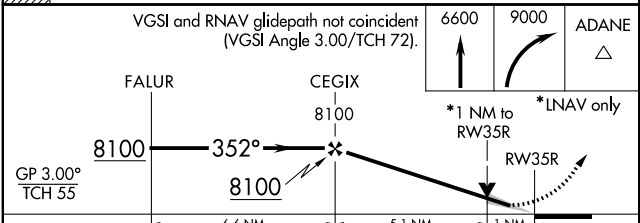
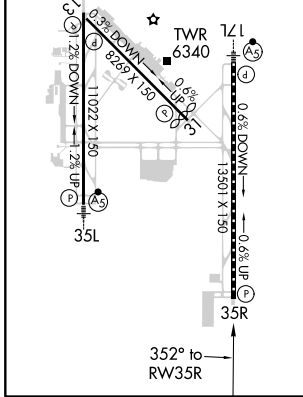
CITY OF COLORADO SPRINGS MUNI (COS)

▽ ▲	For uncompensated Baro-VNAV systems, LNAV/VNAV NA below -21°C (-5°F) or above 39°C (103°F). DME/DME RNP-0.3 NA. RADAR monitoring required when R-2601 in use.	MISSED APPROACH: Climb to 6600 then climbing right turn to 9000 direct ADANE and hold.
----------------------	---	--

ATIS 125.0 254.3	SPRINGS APP CON 124.0 257.875	SPRINGS TOWER 119.9 360.6	GND CON 121.7 348.6	CLNC DEL 134.45 363.125
----------------------------	---	-------------------------------------	-------------------------------	-----------------------------------



ELEV 6187	D	TDZE 6118
MIRL Rwy 13-31		
HIRL Rwy 17R-35L and 17L-35R		
REIL Rwy 13, 17R, 31, and 35R		
TDZ/CL Rwy 17L and 35R		



CATEGORY	A	B	C	D
LPV DA		6318/40	200 (200-¾)	
LNAV/VNAV DA		6399/45	281 (300-¾)	
LNAV MDA	6500/55	382 (400-1)	6500/60	382 (400-1½)
C CIRCLING	6740-1 553 (600-1)	6800-1 613 (700-1)	7040-2½ 853 (900-2½)	7260-3 1073 (1100-3)

SW-1, 22 APR 2021 to 20 MAY 2021

SW-1, 22 APR 2021 to 20 MAY 2021