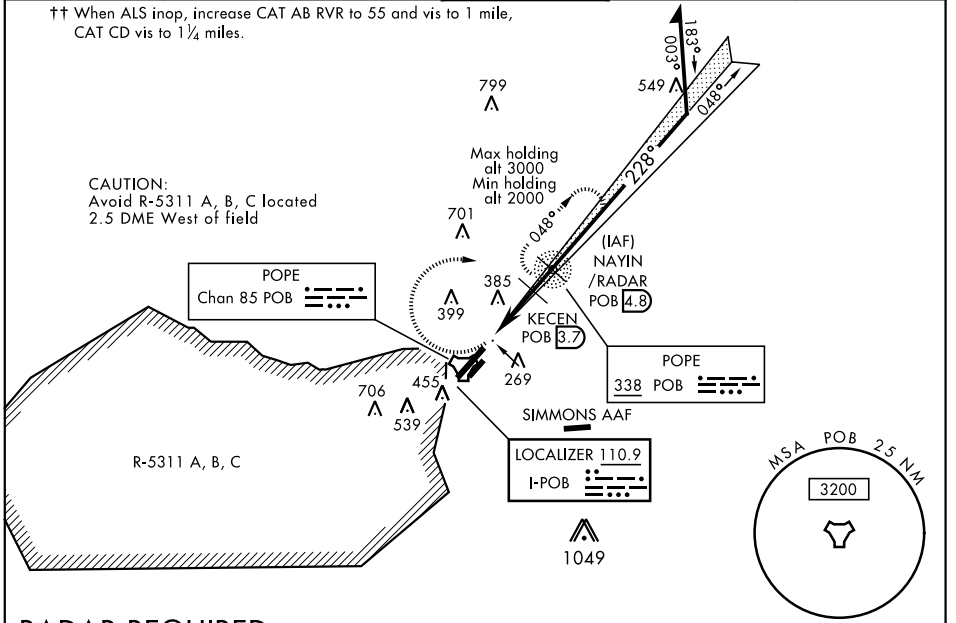


ILS or LOC Y RWY 23

LOC I-POB 110.9	APCH CRS 228°	Rwy ldg TDZE Arprt Elev 7501 200 218	AL-147 [USAF]	POPE AAF (KPOB)
----------------------------------	--------------------------------	---	---------------	-----------------

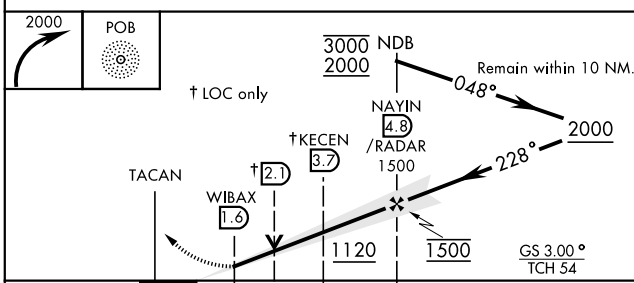
<p>▼ * When ALS inop, increase RVR to 40 and vis to 3/4 mile. ** When ALS inop, increase CAT AB RVR to 55 and vis to 1 mile, CAT CD RVR to 60, vis to 1 1/8 miles. *** Circling not authorized SE of Rwy 5-23.</p>	<p>ALSF-1 MISSED APPROACH: Climbing right turn to 2000 direct POB NDB and hold. Continue climb in hold to 2000.</p>
---	--

ATIS 132.3 353.725	FAYETTEVILLE APP CON 125.175 285.575 (271° - 090°) 133.0 290.25 (091° - 270°)	POPE TOWER 135.025 291.1	GND CON 124.55 275.8	CLNC DEL 275.8
-------------------------------------	--	---	---------------------------------------	---------------------------------



RADAR REQUIRED

EMERG SAFE ALT 100 NM 5300 FROM "POB" TACAN



CATEGORY	A	B	C	D
S-ILS 23 *	400/24		200	(200-1/2)
S-LOC 23 **	620/24	420 (500-1/2)	620/40	420 (500-3/4)
C CIRCLING ***	760-1	542 (600-1)	920-2 702 (800-2)	1060-2 3/4 842 (900-2 3/4)
WITHOUT LAST STEPDOWN FIX				
S-LOC 23 ††	640/24	440 (500-1/2)	640/45	440 (500-7/8)

ELEV 218 Rwy 5 ldg 7501' Rwy 23 ldg 7501'	TDZE 200
--	-----------------

Diagram details: 201 A1, 201 A, 259 A, 310 A, 280 A, 280 A, 350 A, 20.65 LIRL, 2250', 3000 x 450, ASSAULT STRIP, TWR 338, 338, 338, 048°, 003°.

REIL Rwy 5
HIRL Rwy 5-23
LIRL Rwy 050° - 230°

FAF to MAP 3.2 NM

Knots	60	90	120	150	180
Min:Sec	3:12	2:08	1:36	1:17	1:04

SE-2, 22 APR 2021 to 20 MAY 2021

SE-2, 22 APR 2021 to 20 MAY 2021

ILS or LOC Y RWY 23