

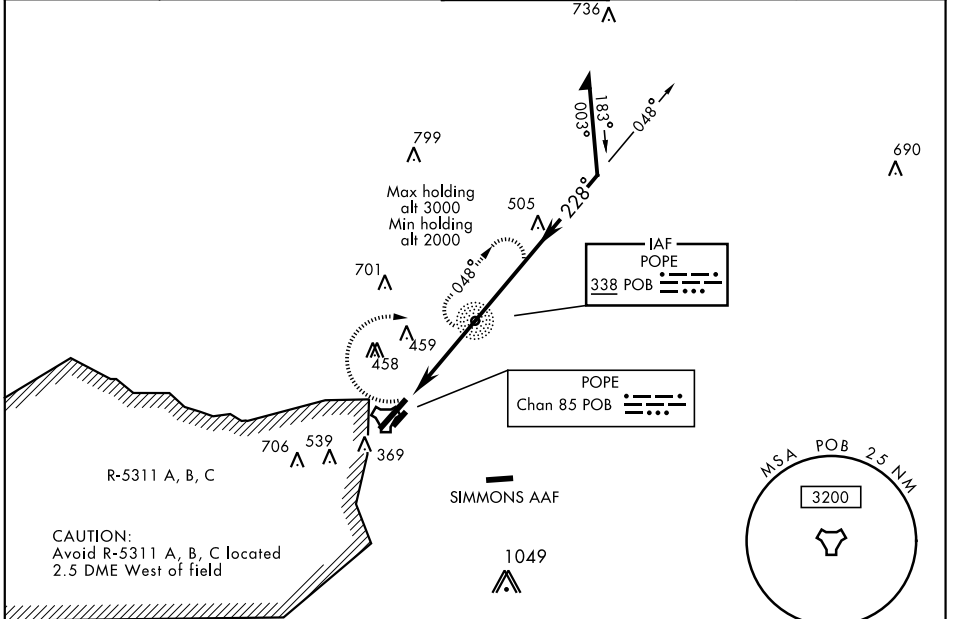
NDB POB 338	APCH CRS 228°	Rwy ldg TDZE Arprt Elev 7501 200 218	AL-147 [USAF]	POPE AAF (KPOB)
-----------------------	-------------------------	--	---------------	-----------------

▼ * When ALS inop, increase CAT AB RVR to 55 and vis to 1 mile, CAT CD vis to 1 3/8 miles.
** Circling not authorized SE of Rwy 5-23.

ALSF-1 **(A1)**

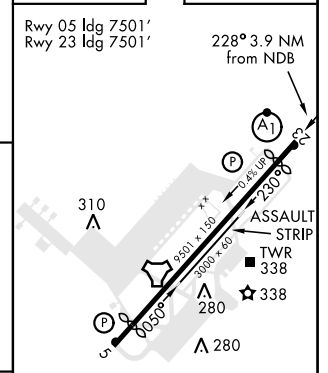
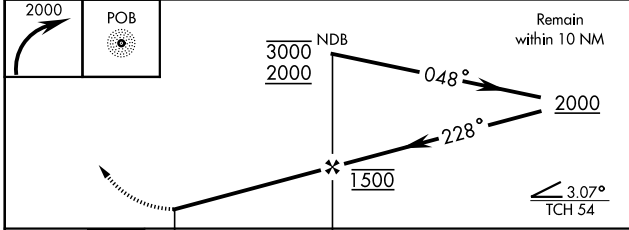
MISSED APPROACH: Climbing right turn to 2000 direct POB NDB and hold, continue climb-in-hold to 2000.

ATIS 132.3 353.725	FAYETTEVILLE APP CON 125.175 285.575 (271°-090°) 133.0 290.25 (091°-270°)	POPE TOWER 135.025 291.1	GND CON 124.55 275.8	CLNC DEL 275.8
------------------------------	---	------------------------------------	--------------------------------	--------------------------



ELEV 218	TDZE 200
----------	----------

RADAR REQUIRED
EMERG SAFE ALT 100 NM 5300 FROM "POB" TACAN



REIL Rwy 5	HIRL Rwy 5-23	LRL Rwy 050° 230°
FAF to MAP 3.2 NM		
Knots	60	90 120 150 180
Min:Sec	3:12	2:08 1:36 1:17 1:04

SE-2, 22 APR 2021 to 20 MAY 2021

SE-2, 22 APR 2021 to 20 MAY 2021