

RNAV (GPS) RWY 23

WAAS Chan 52202 W23A	APCH CRS 228°	Rwy ldg 7501 TDZE 200 Arpt Elev 218
--	-------------------------	--

AL-147 [USAF]

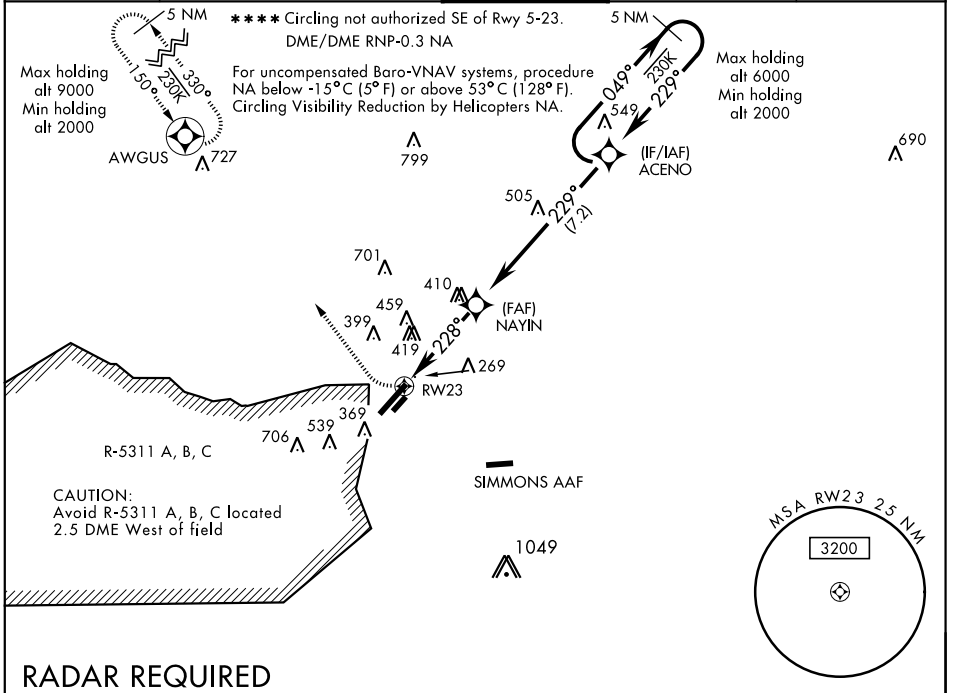
POPE AAF (KPOB)

- When ALS inop, increase CAT ABCD RVR to 40 vis to 3/4 mile.
- ** When ALS inop, increase CAT ABCD vis to 1 1/4 mile.
- *** When ALS inop, increase CAT AB RVR to 55 and vis to 1 mile, CAT CD vis to 1 3/8 miles.



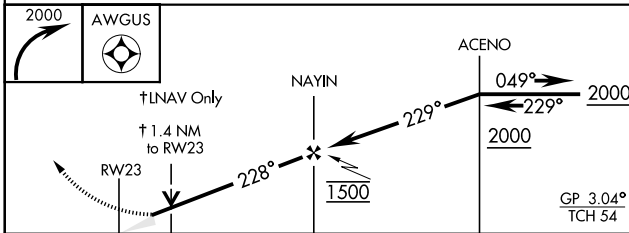
MISSED APPROACH: Climbing right turn to 2000 direct AWGUS and hold.

ATIS 132.3 353.725	FAYETTEVILLE APP CON 125.175 285.575 133.0 290.25 (091° - 090°) (091° - 270°)	POPE TOWER 135.025 291.1	GND CON 124.55 275.8	CLNC DEL 275.8
------------------------------	---	------------------------------------	--------------------------------	--------------------------

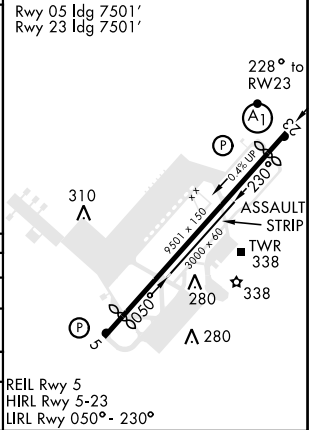


RADAR REQUIRED

EMERG SAFE ALT 100 NM 5300



ELEV 218	TDZE 200
----------	----------



RNAV (GPS) RWY 23

SE-2, 22 APR 2021 to 20 MAY 2021

SE-2, 22 APR 2021 to 20 MAY 2021