

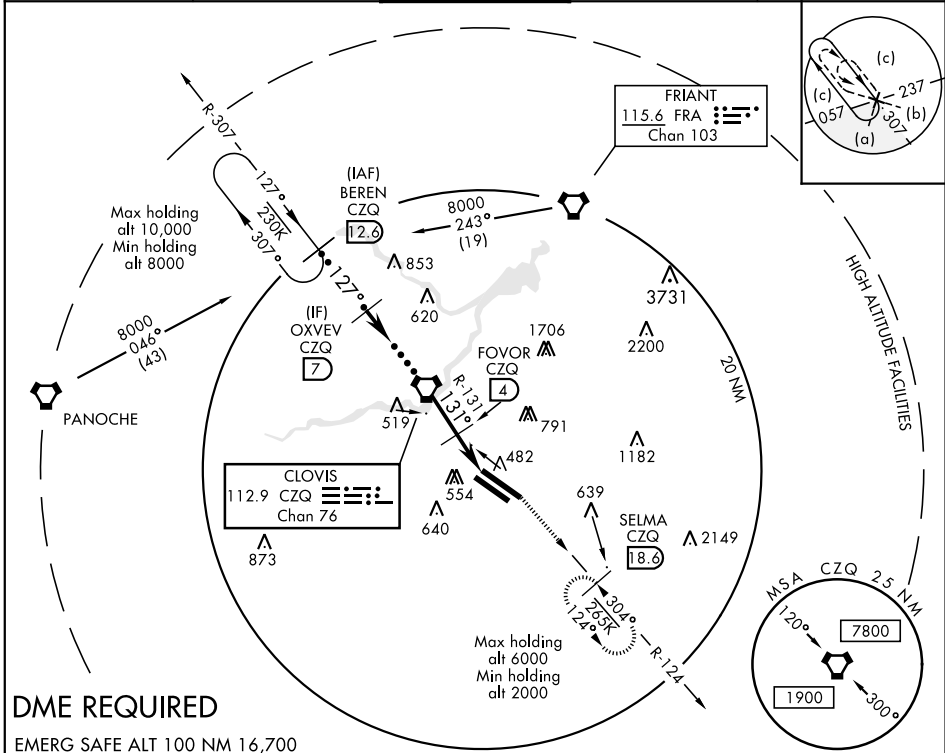
HI-TACAN RWY 11L

VORTAC CZQ 112.9 Chan 76	APCH CRS 131°	Rwy Idg TDZE Arprt Elev 11L 9539 11R 8008 11L 336 11R 333 336
--	-------------------------	---

JAL-162 [USAF] FRESNO YOSEMITE INTL (KFAT)

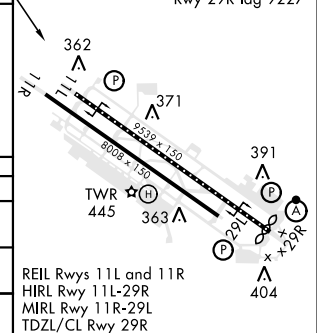
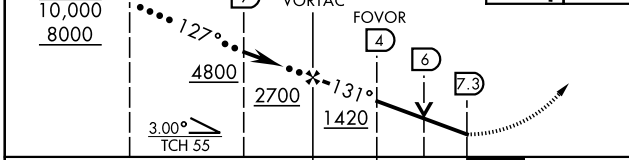
▽ MISSED APPROACH: Climbing left turn to 2000 on CZQ VORTAC R-124 to SELMA / 18.6 DME and hold.

ATIS 121.35 273.6	FRESNO APP CON 119.6 351.95	FRESNO TOWER 118.2 251.1	GND CON 121.7 348.6	CLNC DEL 124.35 348.6
-----------------------------	---------------------------------------	------------------------------------	-------------------------------	---------------------------------



DME REQUIRED
EMERG SAFE ALT 100 NM 16,700

BEREN CZQ R-307 12.6	VGSI and descent angles not coincident (VGSI Angle 3.00/TCH 50)	2000 CZQ R-124 18.6	ELEV 336	TDZE 11L 336 TDZE 11R 333
-----------------------------	---	----------------------------	----------	------------------------------



CATEGORY	C	D	E
S-11L	800-1½	464	(500-1½)
SIDESTEP 11R	800-1½ 467 (500-1½)	800-2	467 (500-2)
CIRCLING	920-1½ 584 (600-1½)	920-2 584 (600-2)	1140-2¾ 804 (900-2¾)

REIL Rwy 11L and 11R
HIRL Rwy 11L-29L
MIRL Rwy 11R-29L
TDZL/CL Rwy 29R

HI-TACAN RWY 11L

SW-2, 22 APR 2021 to 20 MAY 2021

SW-2, 22 APR 2021 to 20 MAY 2021