

WAAS CH <b>78330</b> <b>W11B</b>	APP CRS <b>112°</b>	Rwy Idg TDZE Apt Elev	<b>8008</b> <b>333</b> <b>336</b>
--	------------------------	-----------------------------	---

# RNAV (GPS) RWY 11R

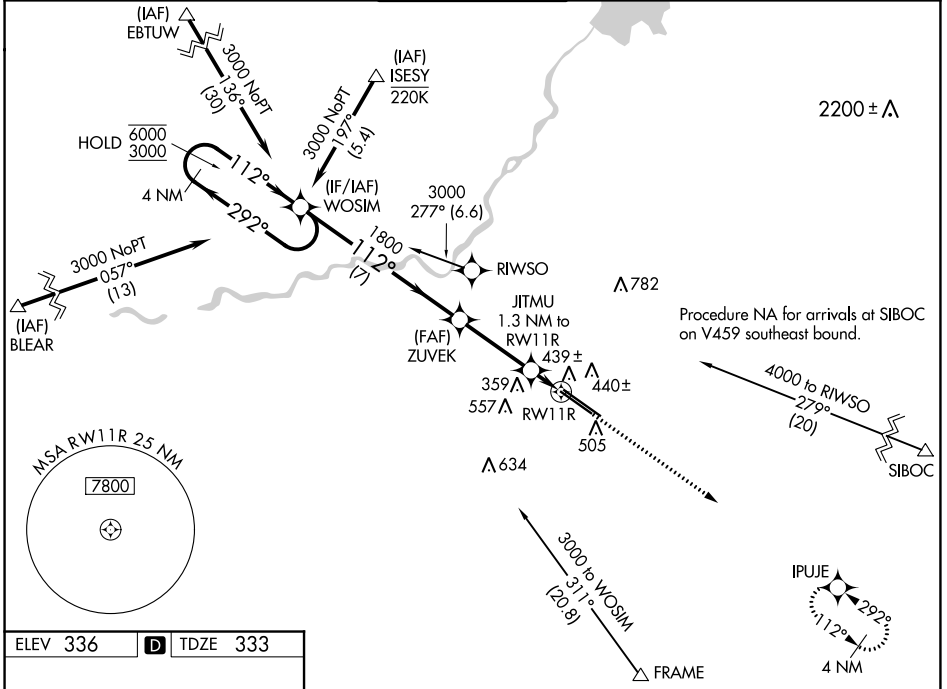
FRESNO YOSEMITE INTL (FAT)

RNP APCH.

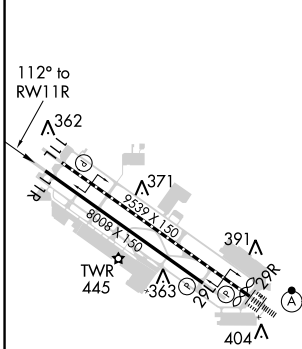
▼ Rwy 11R helicopter visibility reduction below  $\frac{3}{4}$  SM NA. For uncompensated Baro-VNAV systems, LNAV/VNAV NA below -1°C or above 54°C.

MISSED APPROACH: Climb to 2600 direct IPUJE and hold.

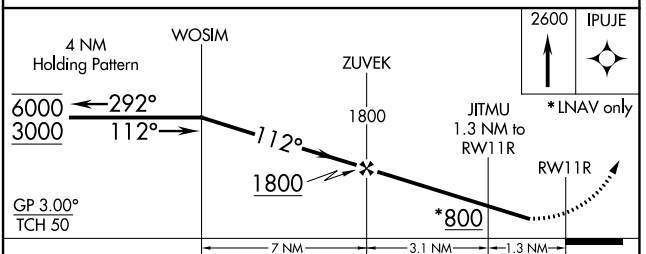
ATIS <b>121.35 273.6</b>	FRESNO APP CON <b>119.6 351.95</b>	<b>FRESNO TOWER</b> <b>118.2 251.1</b>	GND CON <b>121.7 348.6</b>	CLNC DEL <b>124.35 348.6</b>
-----------------------------	---------------------------------------	---	-------------------------------	---------------------------------



ELEV <b>336</b>	<b>D</b>	TDZE <b>333</b>
-----------------	----------	-----------------



REIL Rwy 11L and 11R  
 HIRL Rwy 11L-29R  
 MIRL Rwy 11R-29L  
 TDZ/CL Rwy 29R



CATEGORY	A	B	C	D
LPV DA	584- $\frac{3}{4}$ 251 (300- $\frac{3}{4}$ )			
LNAV/VNAV DA	620- $\frac{7}{8}$ 287 (300- $\frac{7}{8}$ )			
LNAV MDA	700-1 367 (400-1)			
<b>C</b> CIRCLING	820-1 484 (500-1)	920-1 $\frac{1}{2}$ 584 (600-1 $\frac{1}{2}$ )		920-2 584 (600-2)

SW-2, 22 APR 2021 to 20 MAY 2021

SW-2, 22 APR 2021 to 20 MAY 2021