

LOC I-LQQ	APP CRS	Rwy ldg TDZE	8075 654
<b>110.1</b>	<b>225°</b>	Apt Elev	680

# ILS RWY 22L (SA CAT I & II)

CHICAGO O'HARE INTL (ORD)

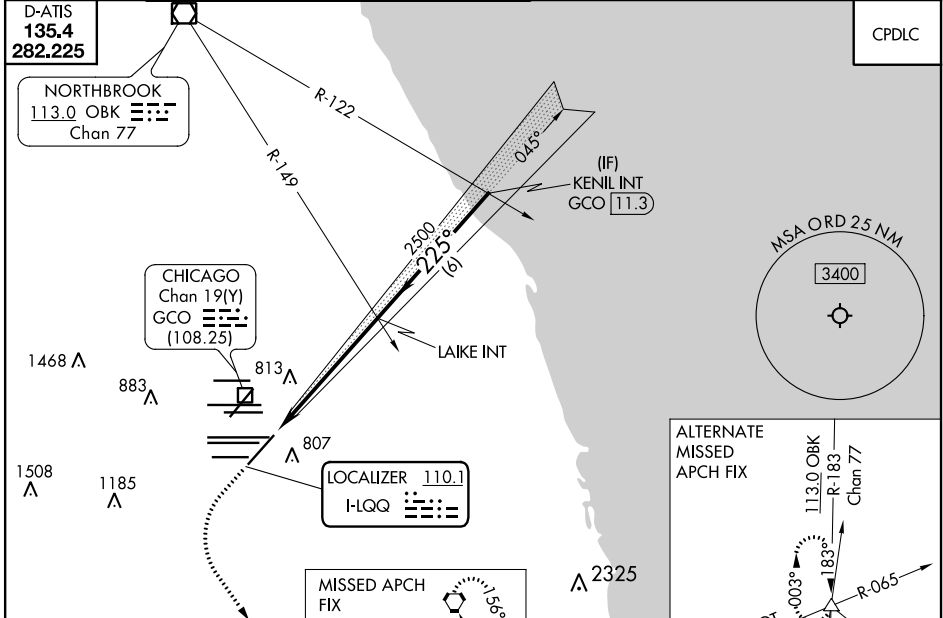
RADAR required for procedure entry.

Simultaneous approach authorized.  
 SA CAT I: Requires specific OPSPEC, MSPEC, or LOA approval and use of HUD to DH.  
 SA CAT II: Reduced lighting: Requires specific OPSPEC, MSPEC, or LOA approval and use of autoland or HUD to touchdown.

MALSR

MISSED APPROACH: Climb to 1100 then climbing left turn to 4000 direct CGT VORTAC and hold.

CHICAGO APP CON	O'HARE TOWERS	GND CON	(TWR CENTER)	CLNC DEL
<b>119.0 292.125</b>	<b>128.15 348.0</b> (Rwy 9L/27R) <b>133.0 348.0</b> (110R/28L)	<b>124.125</b> (TWR NORTH) <b>118.05</b> (TWR SOUTH) <b>226.675</b> (ALL TWRs)	<b>121.75</b> (OBND) <b>121.9</b> (IBND)	<b>121.6</b>
D-ATIS <b>135.4</b> <b>282.225</b>				CPDLC



ELEV 680	<b>D</b>	TDZE 654
----------	----------	----------

