

LOC/DME I-VQX 110.75 Chan 44(Y)	APP CRS 274°	Rwy ldg TDZE Apt Elev	7500 667 680
--	------------------------	-----------------------------	---

ILS RWY 28L (SA CAT I)

CHICAGO O'HARE INTL (ORD)

From VOGLR: RNAV 1-GPS required.

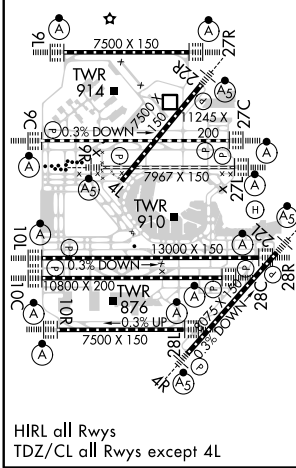
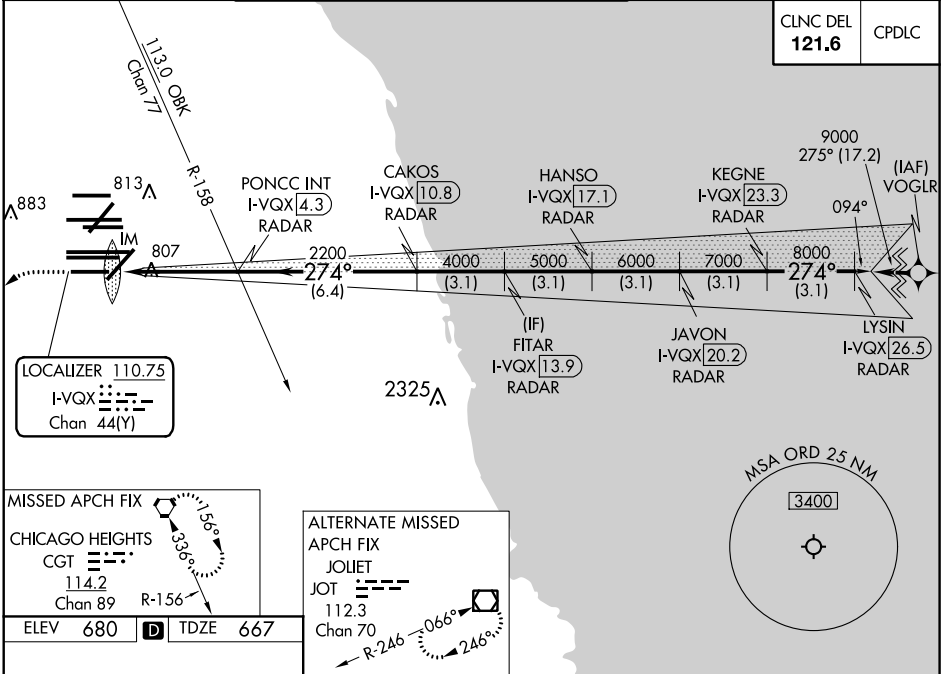
Aircraft not GPS equipped - RADAR required for procedure entry. DME or RADAR required.

ALS-F-2

MISSED APPROACH: Climb to 1200 then climbing left turn to 4000 direct CGT VORTAC and hold.

Simultaneous approach authorized.
Requires specific OPSPEC, MSPEC, or LOA approval and use of HUD to DH.

D-ATIS 135.4	CHICAGO APP CON 119.0 292.125	O'HARE TOWERS 128.15 348.0 (Rwy 9L/27R) 133.0 348.0 (10R/28L)	GND CON (TWR NORTH) 124.125	(TWR CENTER) 121.75 (OBND)
282.225	119.0 292.125	120.75 121.15 126.9 132.7 348.0 (CENTER)	118.05 (TWR SOUTH)	121.9 (IBND)
			226.675 (ALL TWSR)	



1200	4000	CGT				
			FITAR I-VQX 13.9	JAVON I-VQX 20.2	LYSIN I-VQX 26.5	
			RADAR	RADAR	RADAR	
			PONCC INT I-VQX 4.3	HANSO I-VQX 17.1	KEGNE I-VQX 23.3	
			RADAR	RADAR	RADAR	
			I-VQX DME ANTENNA	CAKOS I-VQX 10.8		
			RADAR	RADAR		
			IM	2200	4000	5000
				6000	7000	8000
						9000
						GS 3.00°
						TCH 55
			992'	4.7 NM	6.4 NM	3.1 NM
				3.1 NM	3.1 NM	3.1 NM
			CATEGORY A	B	C	D
			S-ILS 28L	RA 157/14 150 DA 817		

SA CATEGORY I ILS-SPECIAL AIRCREW & AIRCRAFT CERTIFICATION REQUIRED

EC-3, 22 APR 2021 to 20 MAY 2021

EC-3, 22 APR 2021 to 20 MAY 2021