

LOC/DME I-AIC 110.5 Chan 42	APP CRS 273°	Rwy ldg 7782 TDZE 654 Apt Elev 680
---	------------------------	--

ILS or LOC RWY 27L

CHICAGO O'HARE INTL (ORD)

From VOGLR: RNAV 1-GPS required. Aircraft not GPS equipped - RADAR required for procedure entry. DME or RADAR required.

ALSF-2

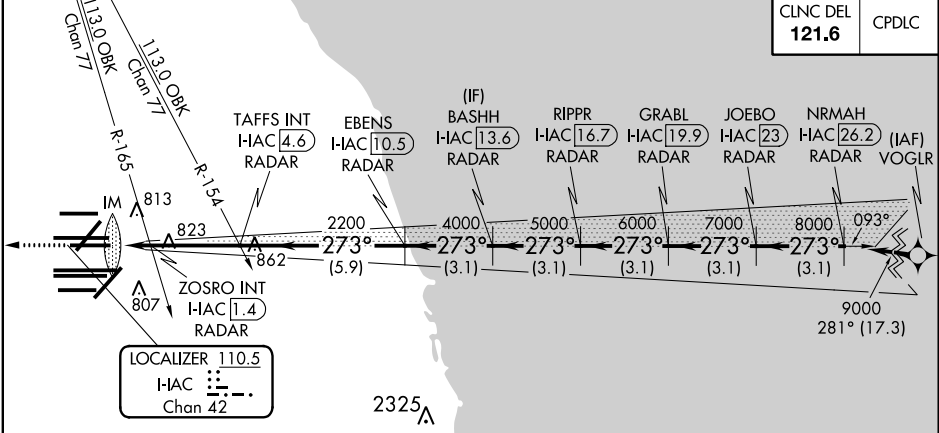
MISSILE APPROACH: Climb to 1200 then climb to 4000 on heading 265° and on CGT VORTAC R-307 to WASCO/CGT 45.8 DME/RADAR and hold.

Simultaneous approach authorized.

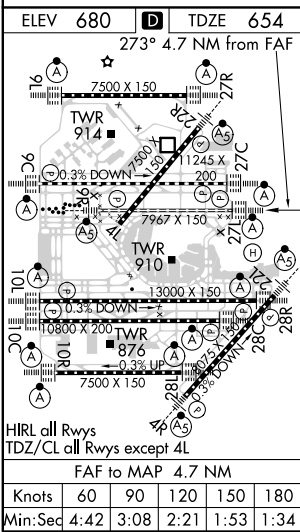
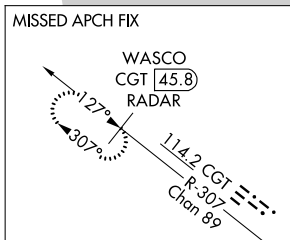


D-ATIS 135.4 282.225	CHICAGO APP CON 119.0 292.125	O'HARE TOWERS 128.15 348.0 (Rwy 9L/27R) 133.0 348.0 (10R/28L) 120.75 121.15 126.9 132.7 348.0 (CENTER)	GND CON (TWR CENTER) 124.125 (TWR NORTH) 118.05 (TWR SOUTH) 226.675 (ALL TWS)	(TWR CENTER) 121.75 (OBND) 121.9 (IBND)
--	---	--	---	---

CLNC DEL 121.6	CPDLC
--------------------------	-------



2325 A



ELEV 680	TDZE 654	273° 4.7 NM from FAF	
1200	4000	CGT R-307	WASCO CGT 45.8 RADAR
hdg 265°		VGSi and ILS glidepath not coincident (VGSi Angle 3.00/TCH 67).	
*LOC only		TAFSS INT I-HAC 4.6 RADAR	BASHH I-HAC 13.6 RADAR
I-HAC DME ANTENNA		EBENS I-HAC 10.5 RADAR	GRABL I-HAC 19.9 RADAR
I-HAC 0.1		ZOSRO INT I-HAC 1.4 RADAR	JOEBO I-HAC 23 RADAR
IM		2200	NRMAH I-HAC 26.2 RADAR
0.1 1.4 3.2 NM		-5.9 NM	3.1 NM 3.1 NM 3.1 NM 3.1 NM
1160*	2200	4000	5000 6000 7000 8000 9000
CATEGORY A B C D		GS 3.00° TCH 55	
S-ILS 27L		854/18 200 (200-½)	
S-LOC 27L		1160/24 506 (500-½) 1160/55 506 (500-1)	
ZOSRO FIX MINIMUMS (DUAL VOR RECEIVERS OR DME REQUIRED)			
S-LOC 27L		1080/24 426 (400-½) 1080/40 426 (400-¾)	

EC-3, 22 APR 2021 to 20 MAY 2021

EC-3, 22 APR 2021 to 20 MAY 2021