

LOC/DME I-VZE <b>108.95</b> Chan 26 (Y)	APP CRS <b>273°</b>	Rwy ldg <b>10800</b> TDZE <b>651</b> Apt Elev <b>680</b>
---	------------------------	--

# ILS or LOC RWY 28C

CHICAGO O'HARE INTL (ORD)

From VOGLR: RNAV 1-GPS required.  
Aircraft not GPS equipped - RADAR required for procedure entry.  
DME or RADAR required.

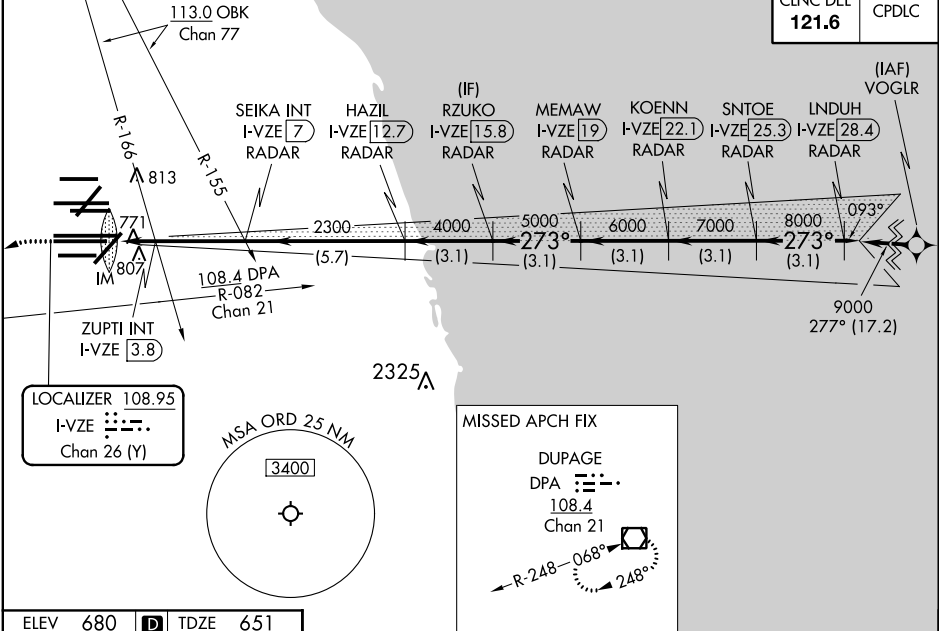
Simultaneous approach authorized.



MISSED APPROACH: Climb to 1100 then climbing left turn to 4000 on heading 215° and DPA VOR/DME R-082 to DPA VOR/DME and hold.

D-ATIS <b>135.4</b> <b>282.225</b>	CHICAGO APP CON <b>119.0 292.125</b>	O'HARE TOWERS <b>128.15 348.0</b> (Rwy 9L/27R) <b>133.0 348.0</b> (10R/28L) <b>120.75 121.15 126.9 132.7 348.0</b> (CENTER)	GND CON (TWR CENTER) <b>124.125</b> (TWR NORTH) <b>121.75</b> (OBND) <b>118.05</b> (TWR SOUTH) <b>121.9</b> (IBND) <b>226.675</b> (ALL TWRs)
--	---	--	--

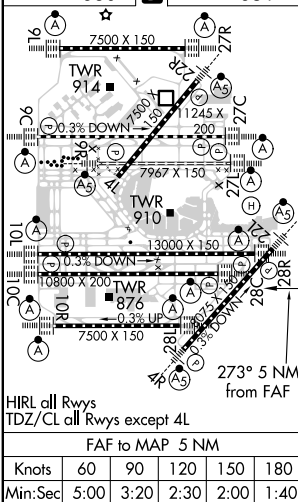
CLNC DEL <b>121.6</b>	CPDLC
--------------------------	-------



EC-3, 22 APR 2021 to 20 MAY 2021

EC-3, 22 APR 2021 to 20 MAY 2021

ELEV <b>680</b>	D	TDZE <b>651</b>
-----------------	---	-----------------



1100	4000	DPA R-082	DPA	RZUKO I-VZE [15.8] RADAR	KOENN I-VZE [22.1] RADAR	LNDUH I-VZE [28.4] RADAR				
*LOC only.				SEIKA INT I-VZE [7] RADAR	MEMAW I-VZE [19] RADAR	SNTOE I-VZE [25.3] RADAR				
I-VZE [2]	ZUPTI INT I-VZE [3.8]	HAZIL I-VZE [12.7] RADAR	IM	2300	4000	5000	6000	7000	8000	9000
VGS1 and ILS glidepath not coincident (VGS1 Angle 3.00/TCH 80).										
GS 3.00° TCH 55										
CATEGORY		A		B		C		D		
S-ILS 28C				851/18		200 (200-1/2)				
S-LOC 28C		1200/24		549 (600-1/2)		1200/60		549 (600-1 1/4)		
ZUPTI FIX MINIMUMS (DUAL VOR RECEIVERS OR DME REQUIRED)										
S-LOC 28C		1040/24		389 (400-1/2)		1040/35		389 (400-5/8)		