

LOC I-FJU <b>110.1</b>	APP CRS <b>045°</b>	Rwy ldg TDZE Apt Elev	<b>8075</b> <b>661</b> <b>680</b>
---------------------------	------------------------	-----------------------------	---

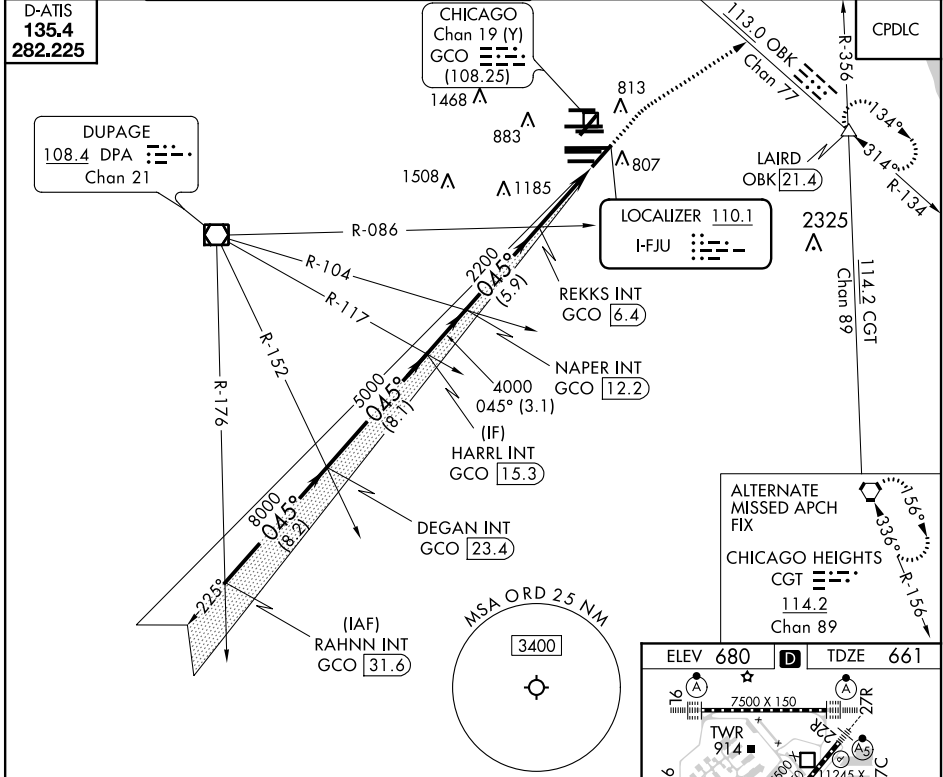
# ILS or LOC RWY 4R

CHICAGO O'HARE INTL (ORD)

RADAR required for procedure entry.		MALSR	MISSED APPROACH: Climb to 1200 then climbing right turn to 4000 on heading 060° and OBK VOR/DME R-134 to LAIRD INT/OBK 21.4 DME and hold.
Simultaneous approach authorized.			

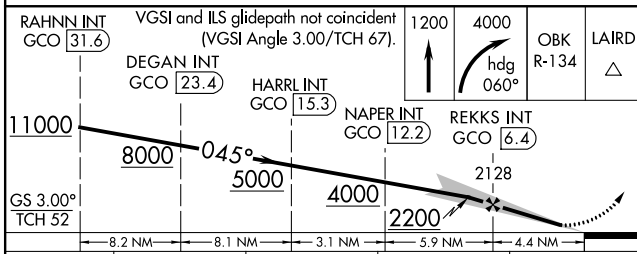
CHICAGO APP CON <b>119.0 292.125</b>	O'HARE TOWERS <b>128.15 348.0</b> (Rwy 9L/27R) <b>133.0 348.0</b> (10R/28L) <b>120.75 121.15 126.9 132.7 348.0</b> (CENTER)	GND CON (TWR CENTER) <b>124.125</b> (TWR NORTH) <b>118.05</b> (TWR SOUTH) <b>226.675</b> (ALL TWRs)	(TWR CENTER) <b>121.75</b> (OBND) <b>121.9</b> (IBND)	CLNC DEL <b>121.6</b>
---	--	--	---	--------------------------

D-ATIS <b>135.4</b> <b>282.225</b>
--



**ALTERNATE MISSED APCH FIX**

**CHICAGO HEIGHTS CGT**  
114.2  
Chan 89



RAHNN INT GCO [31.6]	VGSI and ILS glidepath not coincident (VGSI Angle 3.00/TCH 67).											
DEGAN INT GCO [23.4]	HARRL INT GCO [15.3]	NAPER INT GCO [12.2]	REKKS INT GCO [6.4]	LAIRD INT GCO [21.4]								
<table border="1"> <tr> <td>1200</td> <td>4000</td> <td>OBK R-134</td> <td>LAIRD</td> </tr> <tr> <td>↑</td> <td>hdg 060°</td> <td></td> <td></td> </tr> </table>					1200	4000	OBK R-134	LAIRD	↑	hdg 060°		
1200	4000	OBK R-134	LAIRD									
↑	hdg 060°											
11000	8000	5000	4000	2200								
GS 3.00° TCH 52												
CATEGORY												
S-ILS 4R	A	B	C	D								
S-LOC 4R	1160/24	499 (500-½)	1160/50	499 (500-1)								
CIRCLING	1220-1	540 (600-1)	1220-1½	1460-2½								
			540 (600-1½)	780 (800-2½)								

ELEV 680	D	TDZE 661
----------	---	----------

HIRL all Rwys  
TDZ/CL all Rwys except 4L  
FAF to MAP 4.4 NM

Knots	60	90	120	150	180
Min:Sec	4:24	2:56	2:12	1:46	1:28

EC-3, 22 APR 2021 to 20 MAY 2021

EC-3, 22 APR 2021 to 20 MAY 2021