

LOC/DME I-OYG 111.9 Chan 56	APP CRS 093°	Rwy Idg 11245 TDZE 673 Apt Elev 680
---	------------------------	--

ILS or LOC RWY 9C

CHICAGO O'HARE INTL (ORD)

DME or RADAR required. From GIBNS: RNAV 1-GPS required. Aircraft not GPS equipped - RADAR required for procedure entry.

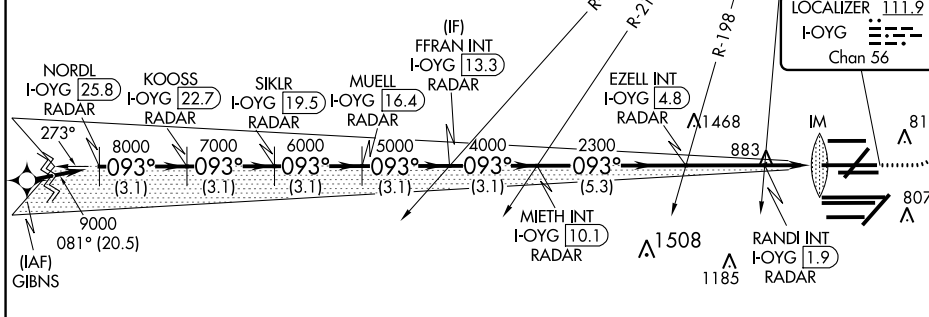
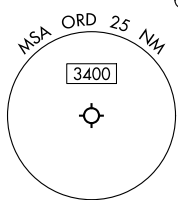
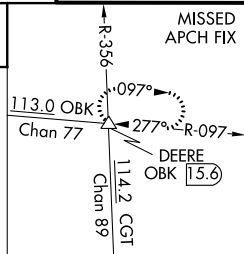
ALSF-2

MISSED APPROACH: Climb to 1200 then climbing left turn to 4000 on heading 037° and OBK VOR/DME R-097 to DEERE INT/OBK 15.6 DME and hold.

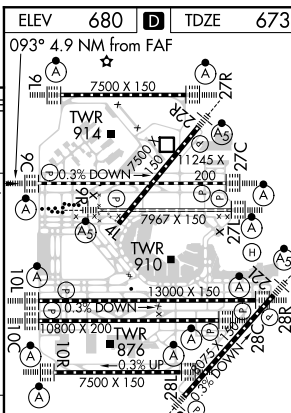
Simultaneous approach authorized. For inop ALS, increase S-LOC 9C Cat C/D visibility to 1½ SM.

CHICAGO APP CON 119.0 292.125	O'HARE TOWERS 128.15 348.0 (Rwy 9L/27R) 133.0 348.0 (110R/28L) 120.75 121.15 126.9 132.7 348.0 (CENTER)	GND CON (TWR NORTH) 124.125 (TWR SOUTH) 118.05 (ALL TWRs) 226.675	(TWR CENTER) 121.75 (OBND) 121.9 (IBND)	CLNC DEL 121.6
---	---	--	---	--------------------------

D-ATIS 135.4 282.225	MISSED APCH FIX	NORTHBROOK 113.0 OBK Chan 77	CPDLC
--	-----------------	------------------------------------	-------



NORDL I-OYG 25.8 RADAR	KOOSS I-OYG 22.7 RADAR	SIKLR I-OYG 19.5 RADAR	MUELL I-OYG 16.4 RADAR	FFRAN INT I-OYG 13.3 RADAR	EZZEL INT I-OYG 4.8 RADAR	RANDI INT I-OYG 1.9 RADAR	DEERE	
9000	8000	7000	6000	5000	4000	2300		
3.1 NM	3.1 NM	3.1 NM	3.1 NM	3.1 NM	5.3 NM	2.9 NM		
VGS and ILS glidepath not coincident (VGS Angle 3.00/TCH 72).							1200	4000
GS 3.00° TCH 55							hdg 037°	OBK R-097
*LOC only.								
I-OYG DME ANTENNA IM								
I-OYG 1.2								
I-OYG 0.2								



CATEGORY	A	B	C	D
S-ILS 9C	873/18 200 (200-½)			
S-LOC 9C	1140/24	467 (500-½)	1140/50	467 (500-1)

ELEV 680	TDZE 673
093° 4.9 NM from FAF	
HIRL all Rwys	
TDZ/CL all Rwys except 4L	
FAF to MAP 4.9 NM	
Knots	60 90 120 150 180
Min:Sec	4:54 3:16 2:27 1:58 1:38

EC-3, 22 APR 2021 to 20 MAY 2021

EC-3, 22 APR 2021 to 20 MAY 2021