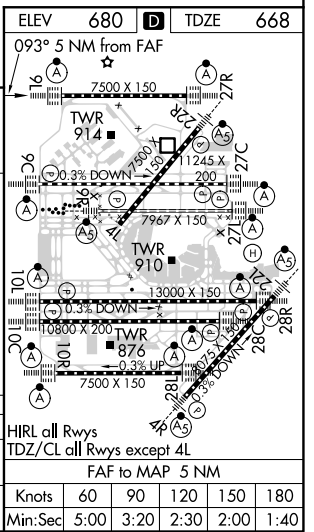
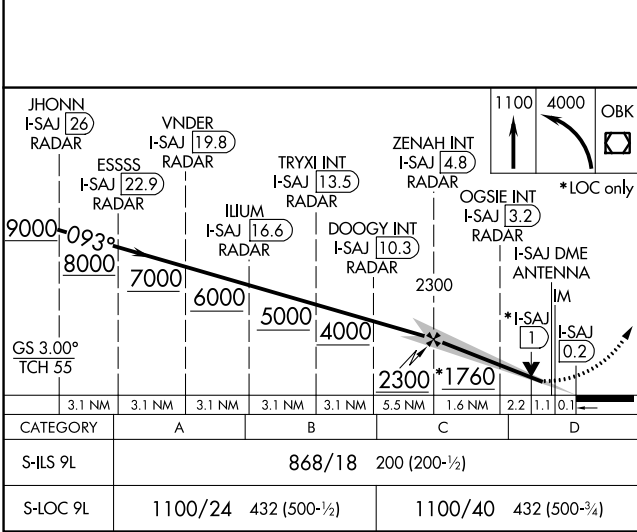
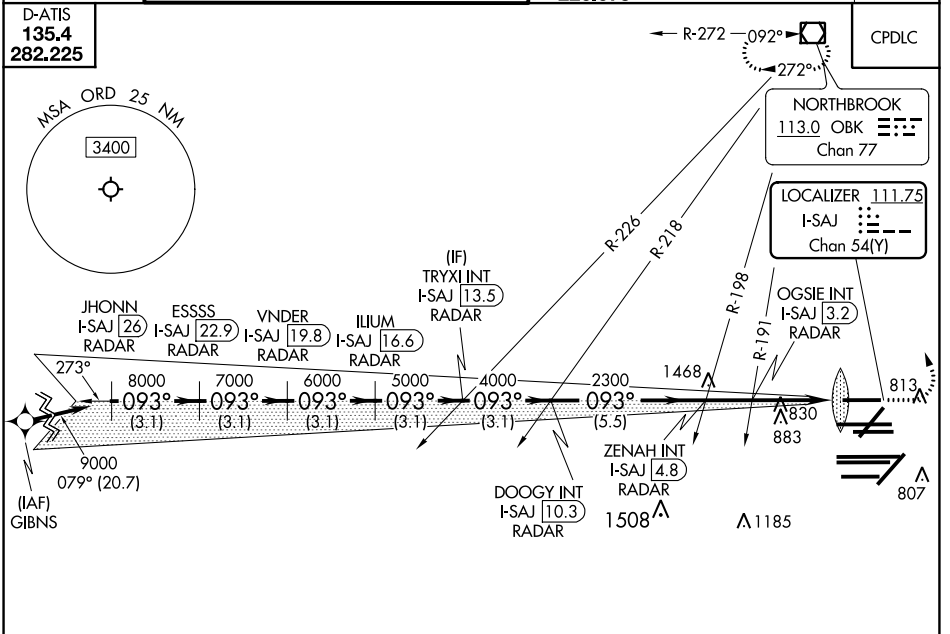


LOC/DME I-SAJ <b>111.75</b> Chan <b>54 (Y)</b>	APP CRS <b>093°</b>	Rwy Idg <b>7500</b> TDZE <b>668</b> Apt Elev <b>680</b>
--	------------------------	--

# ILS or LOC RWY 9L

CHICAGO O'HARE INTL (ORD)

RNAV-1 GPS or RADAR required for procedure entry. RADAR or DME required.		ALSF-2 	MISSED APPROACH: Climb to 1100 then climbing left turn to 4000 direct OBK VOR/DME and hold, continue climb-in-hold to 4000.
Simultaneous approach authorized.			
CHICAGO APP CON <b>119.0 292.125</b>	O'HARE TOWERS <b>128.15 348.0</b> (Rwy 9L/27R) <b>133.0 348.0</b> (110R/28L) <b>120.75 121.15 126.9 132.7 348.0</b> (CENTER)	GND CON (TWR NORTH) <b>124.125</b> (TWR SOUTH) <b>118.05</b> (ALL TWS) <b>226.675</b>	(TWR CENTER) <b>121.75</b> (OBND) <b>121.9</b> (IBND)
D-ATIS <b>135.4</b> <b>282.225</b>			CLNC DEL <b>121.6</b>



EC-3, 22 APR 2021 to 20 MAY 2021

EC-3, 22 APR 2021 to 20 MAY 2021