

ILS PRM RWY 10C (SA CAT I) (CLOSE PARALLEL)

CHICAGO O'HARE INTL (ORD)

LOC/DME I-SXH 108.95 Chan 26(Y)	APP CRS 093°	Rwy Ldg 10540
		TDZE 669
		Apt Elev 680

RNAV 1-GPS or RADAR required for procedure entry. DME or RADAR required.
From GIBNS: RNAV-1 GPS required.

Requires specific OPSPEC, MSPEC, or LOA approval and use of HUD to DH. Simultaneous approach authorized. Use of FD or AP required during simultaneous operations. Dual VHF comm required. See additional requirements on AAUP.

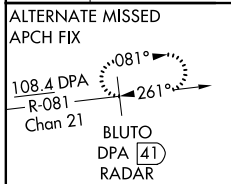


MISSED APPROACH: Climb to 4000 on heading 093° and CGT VORTAC R-336 to CGT VORTAC and hold.

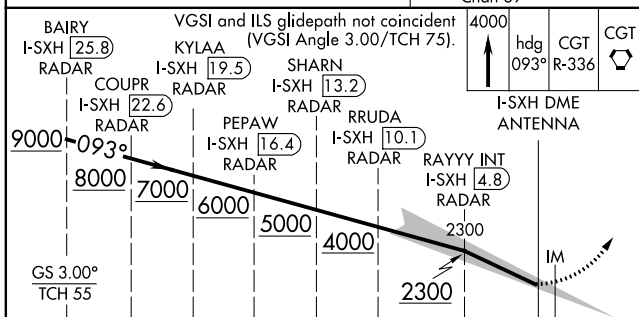
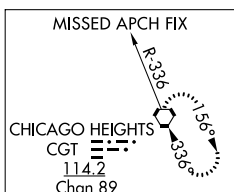
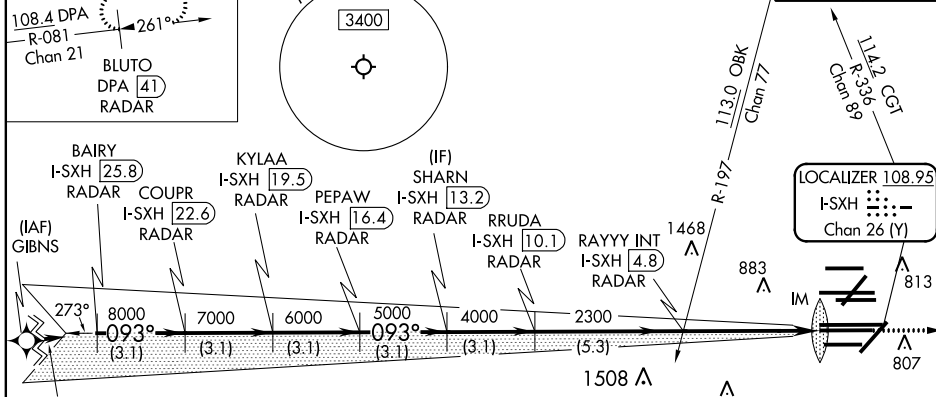
D-ATIS 135.4	CHICAGO APP CON
282.225	119.0 292.125

O'HARE TOWERS			
128.15	348.0	133.0	348.0
<small>(Rwy 9L/27R)</small>		<small>(10R/28L)</small>	
120.75	121.15	126.9	132.7
<small>(CENTER)</small>		<small>(CENTER)</small>	
PRM 119.625			

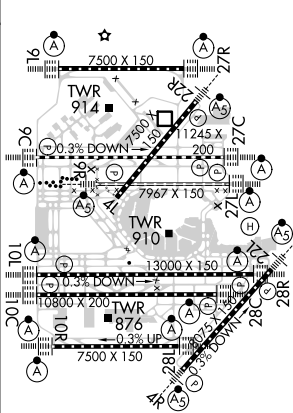
124.125	GND (TWR NORTH)	121.75	(TWR CENTER)
118.05	(TWR SOUTH)	121.9	(IBND)
226.675	(ALL TWRs)		



CLNC DEL 121.6	CPDLC
--------------------------	-------



ELEV 680	D	TDZE 669
----------	---	----------



3.1 NM	3.1 NM	3.1 NM	3.1 NM	3.1 NM	5.3 NM	5 NM	1091'
A		B		C		D	
S-ILS 10C		RA 148/14 150 DA 819					

SA CATEGORY I ILS - SPECIAL AIRCREW & AIRCRAFT CERTIFICATION REQUIRED

HIRL all Rwys
TDZ/CL all Rwys except 4L

EC-3, 22 APR 2021 to 20 MAY 2021

EC-3, 22 APR 2021 to 20 MAY 2021