

ILS PRM RWY 28C (CLOSE PARALLEL) CHICAGO O'HARE INTL (ORD)

LOC/DME I-VZE 108.95 Chan 26 (Y)	APP CRS 273°	Rwy Idg 10800 TDZE 651 Apt Elev 680
--	------------------------	--

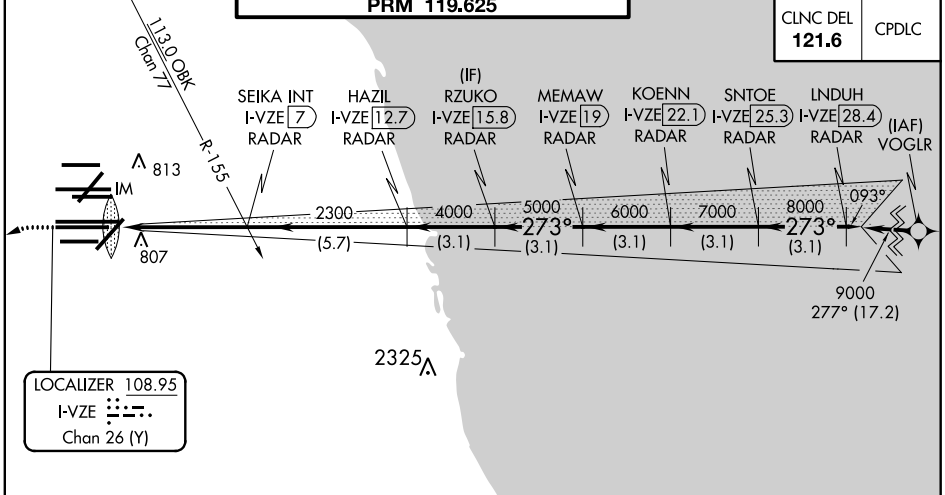
Aircraft not GPS equipped - RADAR required for procedure entry. DME or RADAR required.
From VOGLR: RNAV 1-GPS required.

Simultaneous approach authorized. Use of FD or AP required during simultaneous operations. Dual VHF comm required. See additional requirements on AAUP.

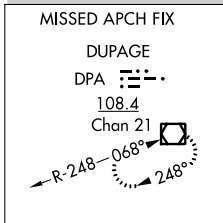
ALSIF-2

MISSED APPROACH: Climb to 1100 then climbing left turn to 4000 on heading 215° and DPA VOR/DME R-082 to DPA VOR/DME and hold.

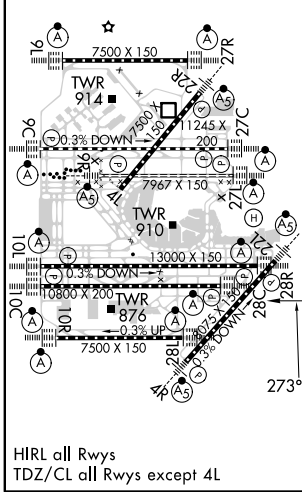
D-ATIS 135.4 282.225	CHICAGO APP CON 119.0 292.125	O'HARE TOWERS 128.15 348.0 (Rwy 9L/27R) 133.0 348.0 (10R/28L) 120.75 121.15 126.9 132.7 348.0 (CENTER) PRM 119.625	GND CON (TWR CENTER) (TWR NORTH) (TWR SOUTH) (ALL TWRs) 124.125 121.75 121.9 121.9 118.05 121.9 121.9 226.675
--	--	---	--



CLNC DEL 121.6	CPDLC
--------------------------	-------



ELEV 680	D	TDZE 651
-----------------	---	-----------------



1100	4000	DPA R-082	DPA	RZUKO I-VZE [15.8] RADAR	KOENN I-VZE [22.1] RADAR	LNDUH I-VZE [28.4] RADAR
hdg 215°				SEIKA INT I-VZE [7] RADAR	MEMAW I-VZE [19] RADAR	SNTOE I-VZE [25.3] RADAR
				HAZIL I-VZE [12.7] RADAR		
				2300	4000	5000
				2300	6000	7000
						8000
						9000
						GS 3.00° TCH 55
				VGSI and ILS glidepath not coincident (VGSI Angle 3.00/TCH 80).		
	0.1	4.9 NM	5.7 NM	3.1 NM	3.1 NM	3.1 NM
CATEGORY	A	B	C	D		
S-ILS 28C	851/18 200 (200-1/2)					

EC-3, 22 APR 2021 to 20 MAY 2021

EC-3, 22 APR 2021 to 20 MAY 2021