

| | | |
|--|------------------------|---|
| LOC/DME I-HZJ 110.75 Chan 44 (Y) | APP CRS 094° | Rwy Idg 7500 TDZE 680 Apt Elev 680 |
|--|------------------------|---|

ILS Z RWY 10R (CAT II & III)

CHICAGO O'HARE INTL (ORD)

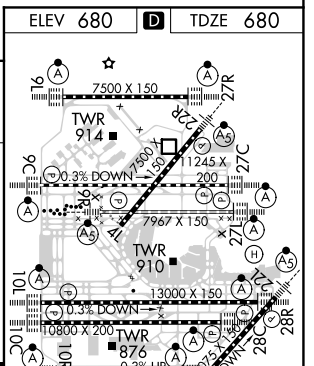
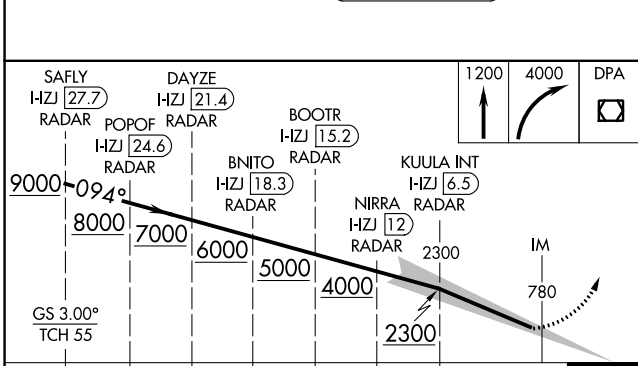
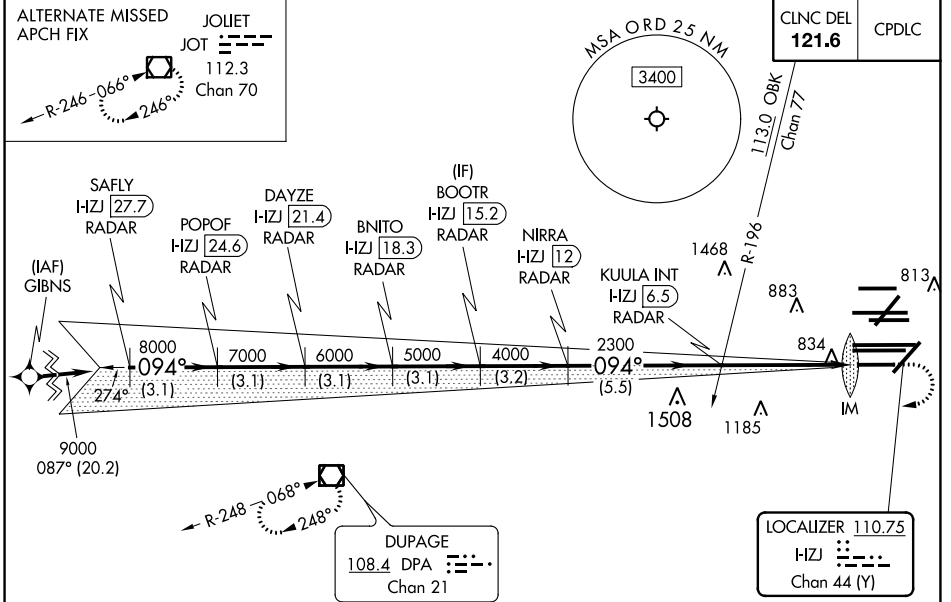
RNAV 1-GPS or RADAR required for procedure entry. DME or RADAR required.
From GIBNS: RNAV-1 GPS required.

Simultaneous approach authorized. CAT II: RVR 1000 authorized with specific OPSPEC, MSPEC, or LOA approval and use of autoland or HUD to touchdown.

ALSF-2

MISSED APPROACH: Climb to 1200 then climbing right turn to 4000 direct DPA VOR/DME and hold.

| | | | | |
|--|---|--|--|--|
| D-ATIS 135.4 282.225 | CHICAGO APP CON 119.0 292.125 | O'HARE TOWERS 128.15 348.0 (Rwy 9L/27R) 133.0 348.0 (10R/28L) 120.75 121.15 126.9 132.7 348.0 (CENTER) | GND CON (TWR NORTH) 124.125 (TWR SOUTH) 118.05 (ALL TWRS) 226.675 | (TWR CENTER) 121.75 (OBND) (IBND) 121.9 |
|--|---|--|--|--|



| | | | | |
|-----------|------------------|---|------------|---|
| CATEGORY | A | B | C | D |
| S-ILS 10R | CAT II RA 110/12 | | 100 DA 780 | |
| S-ILS 10R | CAT III RVR 06 | | | |

CATEGORY II & III ILS - SPECIAL AIRCREW & AIRCRAFT CERTIFICATION REQUIRED

HIRL all Rwys
TDZ/CL all Rwys except 4L

EC-3, 22 APR 2021 to 20 MAY 2021

EC-3, 22 APR 2021 to 20 MAY 2021