


| | | | |
|--|------------------------|---|-------------|
| WAAS CH 50228 W22B | APP CRS 225° | Rwy Idg TDZE 654 Apt Elev 680 | 8075 |
|--|------------------------|---|-------------|

RNAV (GPS) RWY 22L

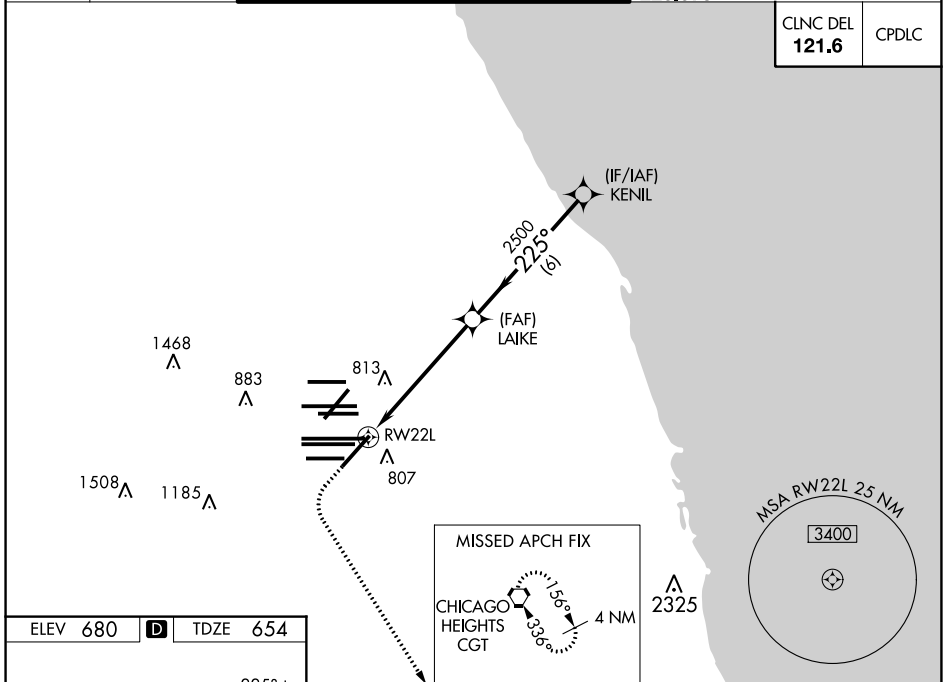
CHICAGO O'HARE INTL (ORD)

⚠ For uncompensated Baro-VNAV systems, LNAV/VNAV NA below -19°C (-2°F) or above 54°C (130°F). Simultaneous approach authorized with Rwy 22R. DME/DME RNP-0.3 NA. LNAV procedure NA during simultaneous operations. Use of FD or AP providing RNAV track guidance required during simultaneous operations.

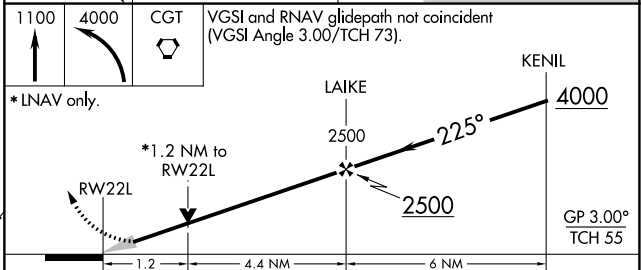
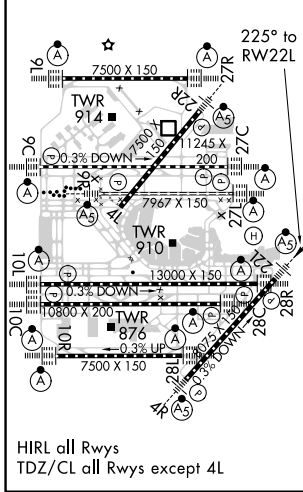
MALSR  MISSED APPROACH: Climb to 1100 then climbing left turn to 4000 direct CGT VORTAC and hold.

| | | | |
|--|---|--|---|
| D-ATIS 135.4 282.225 | CHICAGO APP CON 119.0 292.125 | O'HARE TOWERS 128.15 348.0 (Rwy 9L/27R) 133.0 348.0 (10R/28L) 120.75 121.15 126.9 132.7 348.0 (CENTER) | GND CON (TWR CENTER) 124.125 (TWR NORTH) 121.75 (OBND) 118.05 (TWR SOUTH) 121.9 (IBND) 226.675 (ALL TWRS) |
|--|---|--|---|

| | |
|--------------------------|-------|
| CNLC DEL 121.6 | CPDLC |
|--------------------------|-------|



| | | |
|-----------------|----------|-----------------|
| ELEV 680 | D | TDZE 654 |
|-----------------|----------|-----------------|



| | | | | |
|-------------------|---------|---------------|-------------------------------|-------------------------------|
| CATEGORY | A | B | C | D |
| LPV DA | | 854/18 | 200 (200-1/2) | |
| LNAV/VNAV DA | | 1066/45 | 412 (400-7/8) | |
| LNAV MDA | 1120/24 | 466 (500-1/2) | 1120/50 | 466 (500-1) |
| C CIRCLING | 1220-1 | 540 (600-1) | 1220-1 1/2 540 (600-1 1/2) | 1460-2 1/2 780 (800-2 1/2) |

EC-3, 22 APR 2021 to 20 MAY 2021

EC-3, 22 APR 2021 to 20 MAY 2021