

WAAS CH <b>70643</b> <b>W27D</b>	APP CRS <b>273°</b>	Rwy Idg <b>11245</b> TDZE <b>653</b> Apt Elev <b>680</b>
--	------------------------	--

# RNAV (GPS) RWY 27C

CHICAGO O'HARE INTL (ORD)

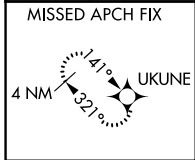
RNP APCH.

Simultaneous approach authorized. LNAV procedure NA during simultaneous operations. Use of FD or AP required during simultaneous operations. For uncompensated Baro-VNAV systems, LNAV/VNAV NA below -19°C or above 54°C. For inop ALS, increase LNAV Cat C/D visibility to RVR 6000.

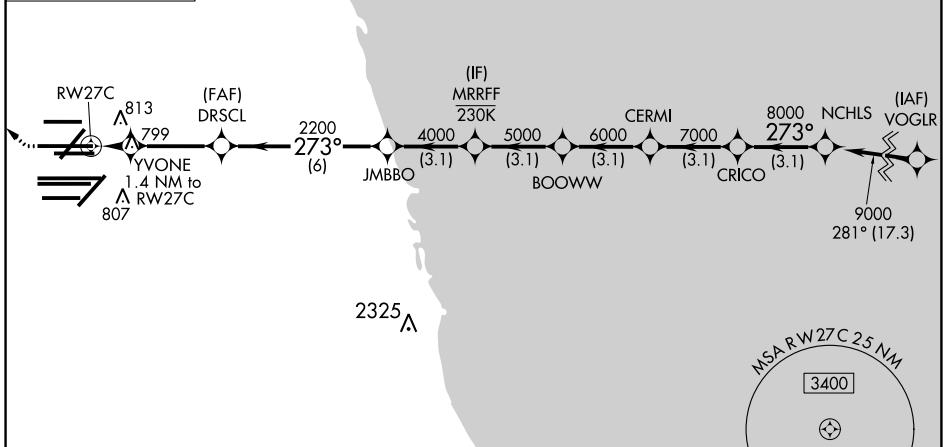


MISSED APPROACH:  
Climb to 1100 then climbing right turn to 4000 direct UKUNE and hold.

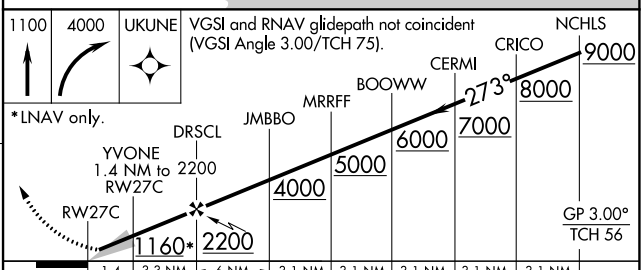
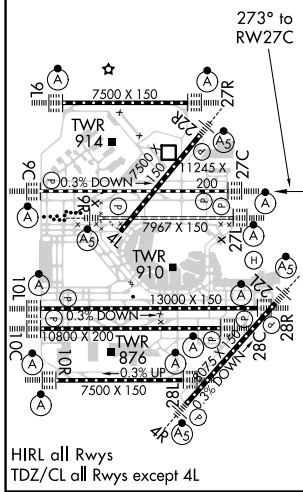
D-ATIS <b>135.4</b>	CHICAGO APP CON <b>119.0 292.125</b>	O'HARE TOWERS <b>128.15 348.0</b> (Rwy 9L/27R) <b>133.0 348.0</b> (10R/28L) <b>120.75 121.15 126.9 132.7 348.0</b> (CENTER)		GND CON (TWR NORTH) <b>124.125</b> (TWR SOUTH) <b>118.05</b> (ALL TWRs) <b>226.675</b>	(TWR CENTER) <b>121.75</b> (OBND) (TWR CENTER) <b>121.9</b> (IBND)
------------------------	---	--	--	---	---



CLNC DEL <b>121.6</b>	CPDLC
--------------------------	-------



ELEV 680	<b>D</b>	TDZE 653
----------	----------	----------



CATEGORY	A	B	C	D
LPV DA		853/18	200 (200-1/2)	
LNAV/VNAV DA		1086/40	433 (500-3/4)	
LNAV MDA	1060/24	407 (400-1/2)	1060/40	407 (400-3/4)

EC-3, 22 APR 2021 to 20 MAY 2021

EC-3, 22 APR 2021 to 20 MAY 2021