

WAAS CH 69508 W27B	APP CRS 273°	Rwy Idg TDZE Apt Elev	7500 664 680
--	------------------------	-----------------------------	---

RNAV (GPS) RWY 27R

CHICAGO O'HARE INTL (ORD)

RNP APCH.
RADAR required for procedure entry.

ALSIF-2

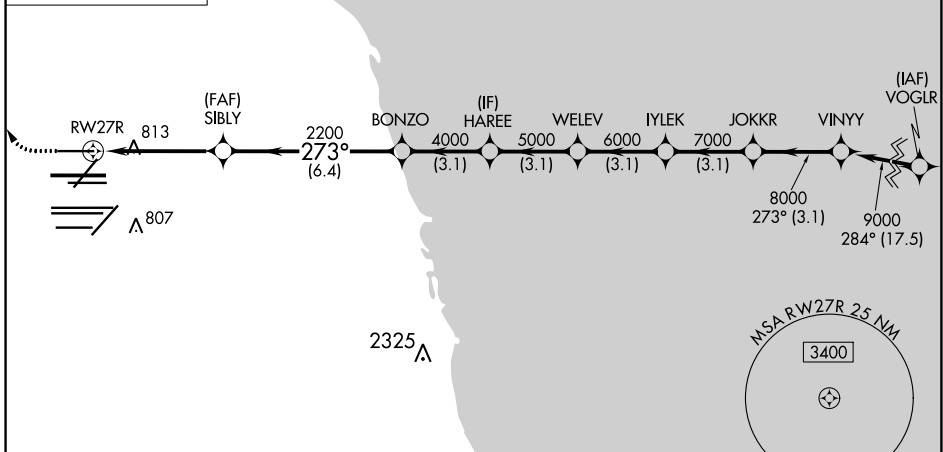
MISSED APPROACH: Climb to 1100 then climbing right turn to 4000 direct OBK VOR/DME and hold, continue climb-in-hold to 4000.

Simultaneous approach authorized. LNAV procedure NA during simultaneous operations. Use of FD or AP providing RNAV track guidance required during simultaneous operations. For uncompensated Baro-VNAV systems, procedure NA below -1°C or above 54°C.

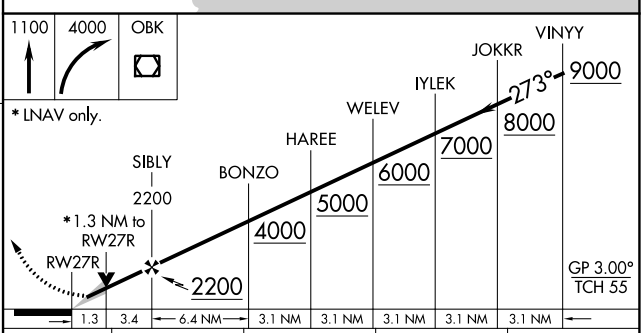
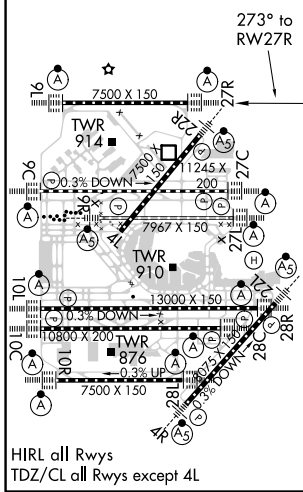
D-ATIS 135.4	CHICAGO APP CON 119.0 292.125	O'HARE TOWERS 128.15 348.0 (Rwy 9L/27R) 133.0 348.0 (10R/28L) 124.125 (TWR CENTER) 118.05 (TWR NORTH) 121.75 (OBND) 119.9 (TWR SOUTH) 121.9 (IBND) 226.675 (ALL TWRS)	
------------------------	---	--	--



CLNC DEL 121.6	CPDLC
--------------------------	-------



ELEV 680	D	TDZE 664
----------	----------	----------



CATEGORY	A	B	C	D
LPV DA		864/18	200 (200-½)	
LNAV/VNAV DA		961/24	297 (300-½)	
LNAV MDA	1120/24	456 (500-½)	1120/45	456 (500-¾)

EC-3, 22 APR 2021 to 20 MAY 2021

EC-3, 22 APR 2021 to 20 MAY 2021