

CHICAGO, ILLINOIS

AL-166 (FAA)

RNAV (GPS) PRM Y RWY 28L

21112

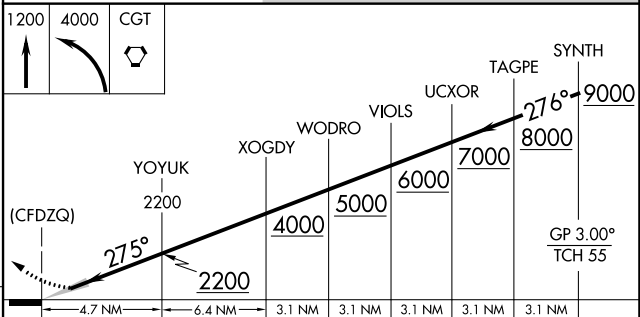
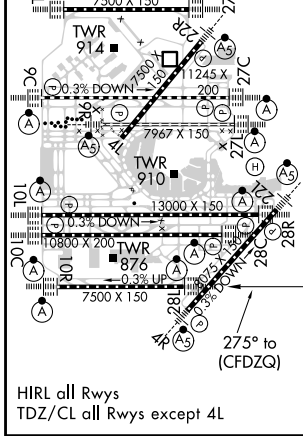
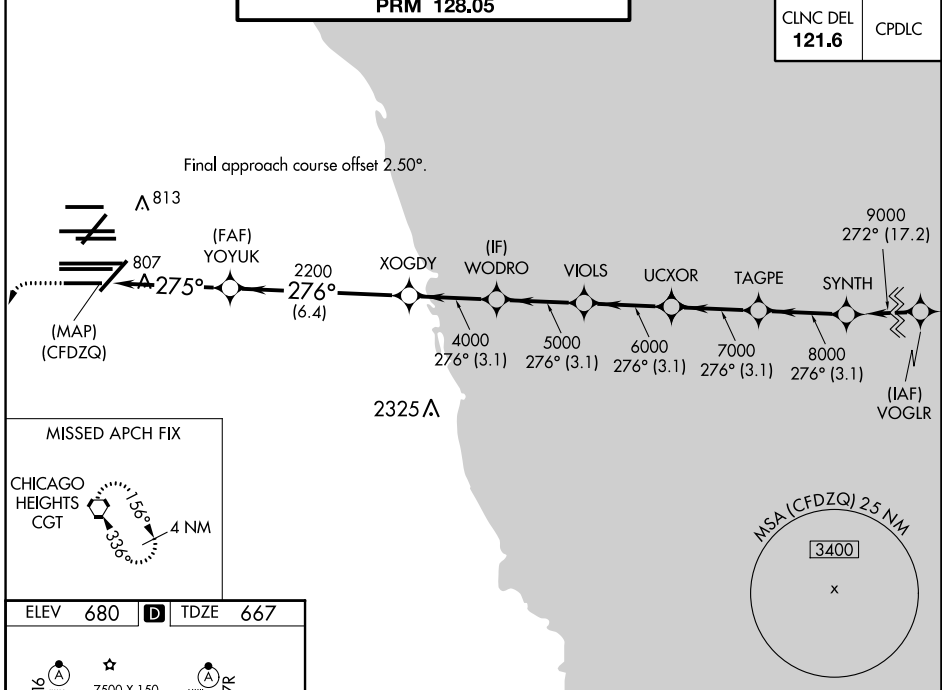
WAAS CH 93839 W28E	APP CRS 275°	Rwy Idg TDZE Apt Elev	7500 667 680
--	------------------------	-----------------------------	---

(CLOSE PARALLEL)
CHICAGO O'HARE INTL (ORD)

RNP APCH. RADAR required.	ALSF-2 	MISSED APPROACH: Climb to 1200 then climbing left turn to 4000 direct CGT VORTAC and hold.
<p>▼ For uncompensated Baro-VNAV systems, LNAV/VNAV NA below -19°C or above 54°C. Simultaneous approach authorized. Use of FD or AP required during simultaneous operations. Dual VHF comm required. See additional requirements on AAUP.</p>		

D-ATIS 135.4 282.225	CHICAGO APP CON 119.0 292.125	O'HARE TOWERS 128.15 348.0 (Rwy 9L/27R) 133.0 348.0 (10R/28L) 120.75 121.15 126.9 132.7 348.0 (CENTER)	GND CON (TWR CENTER) 124.125 (TWR NORTH) 121.75 (OBND) 118.05 (TWR SOUTH) 121.9 (IBND) 226.675 (ALL TWRs)
--	---	---	---

CLNC DEL 121.6	CPDLC
--------------------------	-------



CATEGORY	A	B	C	D
LPV DA		917/24	250 (300-½)	
LNAV/VNAV DA		1090/40	423 (500-¾)	

CHICAGO, ILLINOIS
Orig-A 13SEP18

41°59'N-87°54'W

CHICAGO O'HARE INTL (ORD)

RNAV (GPS) PRM Y RWY 28L (CLOSE PARALLEL)

EC-3, 22 APR 2021 to 20 MAY 2021

EC-3, 22 APR 2021 to 20 MAY 2021