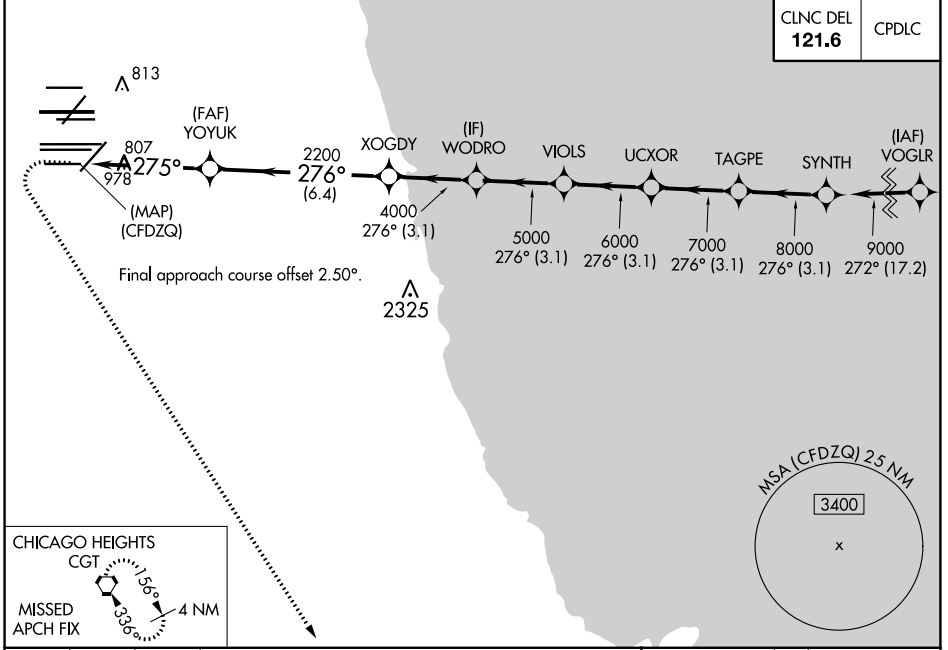


WAAAS CH 93839 W28E	APP CRS 275°	Rwy ldg TDZE 667 Apt Elev 680	7500
---	------------------------	---	-------------

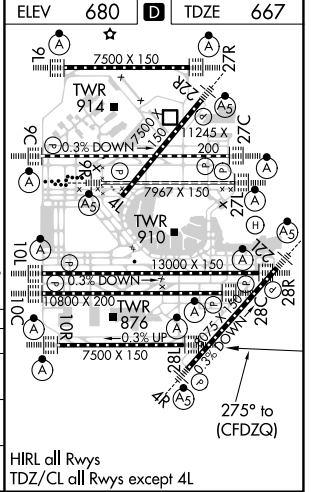
RNAV (GPS) Y RWY 28L

CHICAGO O'HARE INTL (ORD)

RNP APCH: Simultaneous approach authorized. LNAV procedure NA during simultaneous operations. For uncompensated Baro-VNAV systems, LNAV/VNAV NA below -19°C or above 54°C. Use of FD or AP required during simultaneous operations.		ALSF-2 	MISSED APPROACH: Climb to 1200 then climbing left turn to 4000 direct CGT VORTAC and hold.
D-ATIS 135.4 282.225	CHICAGO APP CON 119.0 292.125	O'HARE TOWERS 128.15 348.0 (Rwy 9L/27R) 133.0 348.0 (10R/28L) 120.75 121.15 126.9 132.7 348.0 (CENTER)	GND CON (TWR CENTER) 124.125 (TWR NORTH) 121.75 (OBND) (TWR SOUTH) 118.05 (TWR SOUTH) 121.9 (IBND) 226.675 (ALL TWS)



1200	4000	CGT	SYNTH
*LNAV only			
1.1	3.6 NM	6.4 NM	2200
YOYUK	XOGDY	WODRO	VIOLS
2200	4000	5000	6000
3.1 NM	3.1 NM	3.1 NM	3.1 NM
UCXOR	TAGPE	9000	
7000	8000		
3.1 NM	3.1 NM		
GP 3.00°	TCH 55		
CATEGORY	A	B	C
LPV DA		917/24	250 (300-1/2)
LNAV/VNAV DA		1090/40	423 (500-3/4)
LNAV MDA	1060/24	393 (400-1/2)	1060/35 393 (400-5/8)



EC-3, 22 APR 2021 to 20 MAY 2021

EC-3, 22 APR 2021 to 20 MAY 2021