

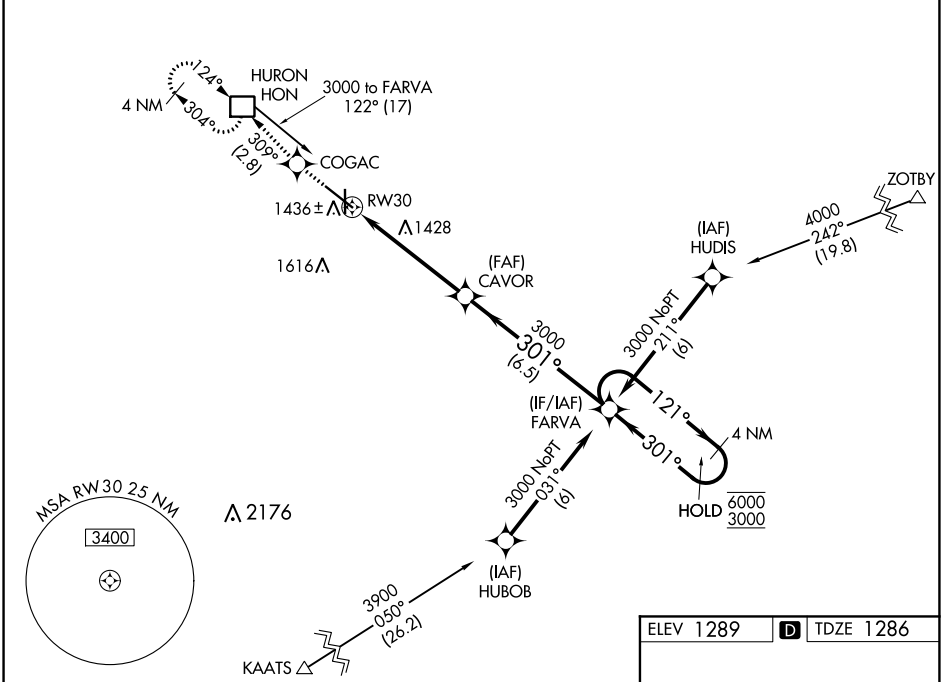
WAAS CH <b>77514</b> <b>W30A</b>	APP CRS <b>301°</b>	Rwy Idg TDZE Apt Elev	<b>7201</b> <b>1286</b> <b>1289</b>
--	------------------------	-----------------------------	---

# RNAV (GPS) RWY 30

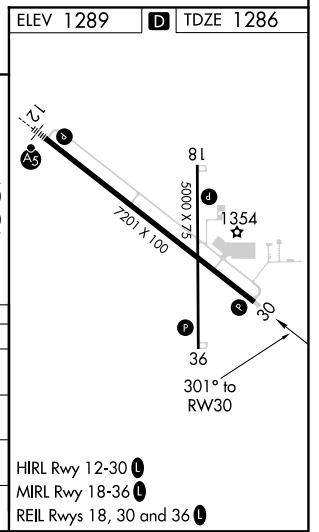
HURON RGNL (HON)

RNP APCH.	MISSED APPROACH: Climb to 3000 direct COGAC and on track 309° to HON DME and hold.
<p><b>▼</b> Circling Rwy 18, 36 NA at night. Rwy 30 helicopter visibility reduction below ¾ SM NA. For uncompensated Baro-VNAV systems, LNAV/VNAV NA below -17°C or above 54°C.</p>	

ASOS <b>118.125</b>	MINNEAPOLIS CENTER <b>126.25 339.8</b>	UNICOM <b>123.0 (CTAF) 0</b>
------------------------	---	---------------------------------



3000	COGAC	HON	CAVOR	FARVA	4 NM Holding Pattern
↑	✦	tr 309°	□		
*LNAV only					
<p>*1.3 NM to RWY30</p>					
1.3 NM		3.9 NM		6.5 NM	
CATEGORY	A	B	C	D	
LPV DA	1559-1		273 (300-1)		
LNAV/VNAV DA	1721-1½		435 (500-1½)		
LNAV MDA	1760-1	474 (500-1)	1760-1⅜ 474 (500-1⅜)	1760-1½ 474 (500-1½)	
<b>C</b> CIRCLING	1820-1	531 (600-1)	1920-1¾ 631 (700-1¾)	1980-2¼ 691 (700-2¼)	



NC-1, 22 APR 2021 to 20 MAY 2021

NC-1, 22 APR 2021 to 20 MAY 2021

- HIRL Rwy 12-30 **0**
- MIRL Rwy 18-36 **0**
- REIL Rws 18, 30 and 36 **0**