

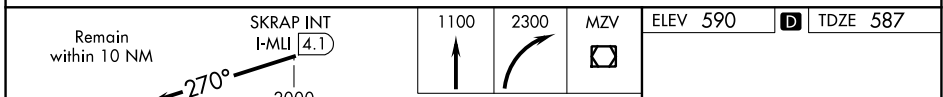
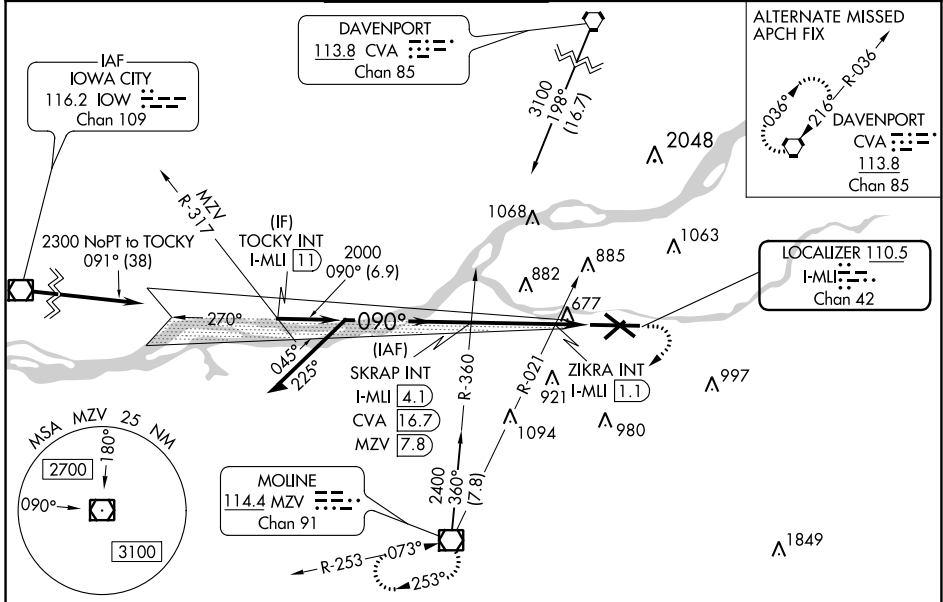
LOC/DME I-MLI 110.5 Chan 42	APP CRS 090°	Rwy Idg 10002 TDZE 587 Apt Elev 590
---	------------------------	--

ILS or LOC RWY 9

QUAD CITY INTL (MLI)

DME required for procedure entry at CVA VORTAC and MZV VOR/DME.		MALSR 	MISSED APPROACH: Climb to 1100 then climbing right turn to 2300 direct MZV VOR/DME and hold.
⚠ Circling to Rwy 5 NA at night. For inop ALS, increase S-LOC 9 Cats C and D visibility to 1 3/8 SM. ZIKRA Minimums: For inop ALS, increase S-LOC Cats C and D visibility to 1 SM. # RVR 1800 authorized with use of FD or AP or HUD to DA.			

ATIS 121.2	QUAD CITY APP CON * 125.95 257.8	QUAD CITY TOWER * 119.4(CTAF) 269.55	GND CON 121.9	CLNC DEL 124.05	UNICOM 122.95
----------------------	--	--	-------------------------	---------------------------	-------------------------



GS 3.00° TCH 50	Remain within 10 NM 2400 → 270° → 2000 → 90° → 1040 → 2000			
CATEGORY	A	B	C	D
S-ILS 9#	787/24 200 (200-1/2)			
S-LOC 9	1040/24	453 (500-1/2)	1040/50	453 (500-1)
CIRCLING	1140-1 550 (600-1)	1160-1 570 (600-1)	1160-1 1/2 570 (600-1 1/2)	1260-2 670 (700-2)
ZIKRA MINIMUMS (Dual VOR receivers or DME required)				
S-LOC 9	940/24	353 (400-1/2)	940/35	353 (400-3/4)
CIRCLING	1140-1 550 (600-1)	1160-1 570 (600-1)	1160-1 1/2 570 (600-1 1/2)	1260-2 670 (700-2)

ELEV 590	D TDZE 587
090° 4.3 NM from FAF 	
MRL Rwy 5-23 REIL Rws 13 and 31 HIRL Rws 9-27 and 13-31 FAF to MAP 4.3 NM	
Knots	60 90 120 150 180
Min:Sec	4:18 2:52 2:09 1:43 1:26

EC-3, 22 APR 2021 to 20 MAY 2021

EC-3, 22 APR 2021 to 20 MAY 2021