

WAAS CH <b>86715</b> <b>W31A</b>	APP CRS <b>306°</b>	Rwy Idg TDZE <b>583</b> Apt Elev <b>590</b>	<b>6432</b>
--	------------------------	---	-------------

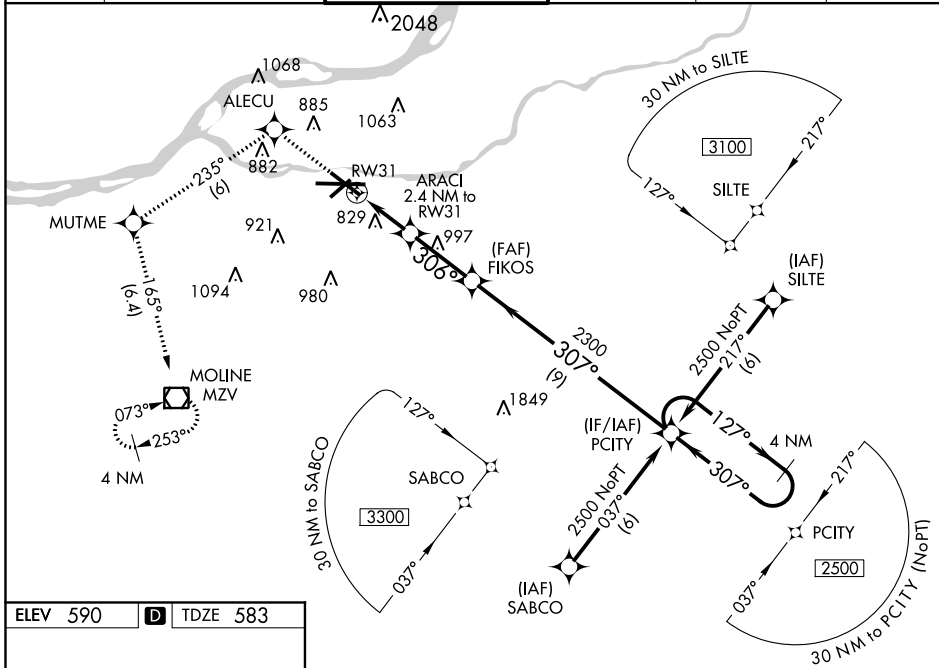
# RNAV (GPS) RWY 31

QUAD CITY INTL (MLI)

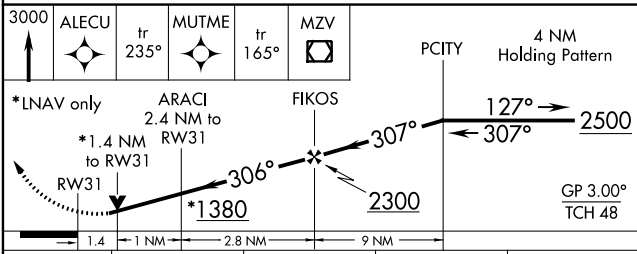
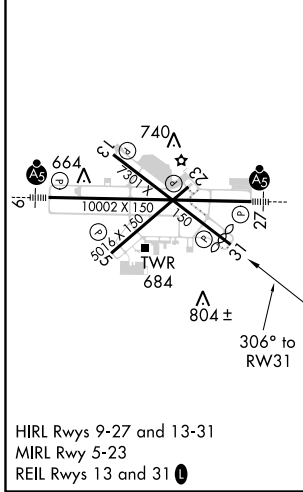
**⚠** Circling to Rwy 5 NA at night. For uncompensated Baro-VNAV systems, LNAV/VNAV NA below -16°C (4°F) or above 47°C (116°F). DME/DME RNP-0.3 NA. When local altimeter setting not received, use Davenport altimeter setting and increase LPV DA to 1078 feet and LNAV/VNAV DA to 1207 feet and all MDA 60 feet, increase LPV all Cats, LNAV/VNAV all cats, LNAV Cats C and D, and Circling Cats C and D visibility ¼ SM. Baro-VNAV and VDP NA when using Davenport altimeter setting. Rwy 31 helicopter visibility reduction below ¾ SM NA.

**MISSED APPROACH:** Climb to 3000 direct ALECU and on track 235° to MUTME and on track 165° to MZV VOR/DME and hold.

ATIS <b>121.2</b>	QUAD CITY APP CON ★ <b>125.95 257.8</b>	QUAD CITY TOWER ★ <b>119.4 (CTAF) 269.55</b>	GND CON <b>121.9</b>	CLNC DEL <b>124.05</b>	UNICOM <b>122.95</b>
----------------------	--	---	-------------------------	---------------------------	-------------------------



ELEV 590	<b>D</b>	TDZE 583
----------	----------	----------



CATEGORY	A	B	C	D
LPV DA		1031-1½	448 (500-1½)	
LNAV/VNAV DA		1160-2	577 (600-2)	
LNAV MDA	1080-1	497 (500-1)	1080-1¼ 497 (500-1¼)	1080-1½ 497 (500-1½)
CIRCLING	1140-1	550 (600-1)	1140-1½ 550 (600-1½)	1260-2 670 (700-2)

EC-3, 22 APR 2021 to 20 MAY 2021

EC-3, 22 APR 2021 to 20 MAY 2021