

LOC/DME I-MRY 110.7 Chan 44	APP CRS 098°	Rwy ldg 7000 TDZE 198 Apt Elev 257
---	------------------------	---

ILS or LOC RWY 10R

MONTEREY RGNL (MRY)

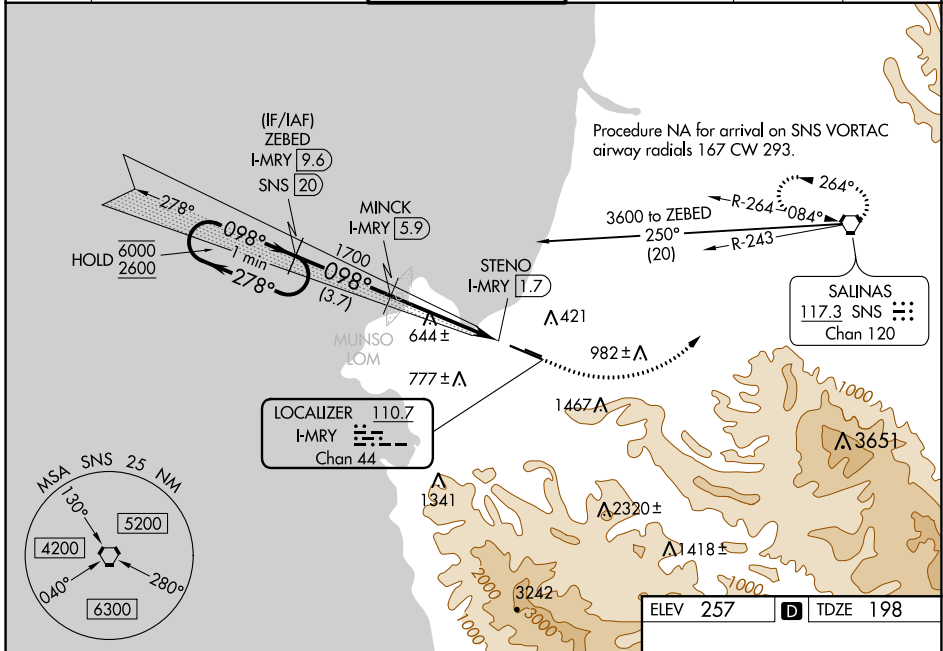
DME required.

⚠ Circling NA south of Rwy 10R-28L.
For inop ALS, increase S-ILS 10R all Cats visibility to RVR 6000, and increase S-LOC 10R Cat C and D visibility to 2 SM.

MALSRL 45

MISSED APPROACH: Climb to 600 then climbing left turn to 5000 on heading 030° and on SNS VORTAC R-243 to SNS VORTAC and hold, continue climb-in-hold to 5000. # Missed approach requires minimum climb of 265 feet per NM to 1360.

ATIS 119.25	NORCAL APP CON 133.0 251.15 (340°-144°) 127.15 307.125 (145°-339°)	MONTEREY TOWER * 118.4 (CTAF) 257.8	GND CON 120.875 348.6	CLNC DEL 135.45	UNICOM 122.95
-----------------------	--	--	---------------------------------	---------------------------	-------------------------



SW-2, 22 APR 2021 to 20 MAY 2021

SW-2, 22 APR 2021 to 20 MAY 2021

ILS unusable from 1.7 DME inbound.	600	5000	SNS	
One Minute Holding Pattern	ZEBED I-MRY [9.6]	MINCK I-MRY [5.9]	SNS R-243	
6000 ← 278°	1700	*I-MRY [3.4]	*LOC only	
2600 → 098°	1700	STENO I-MRY [1.7]		
GS 3.00°	3.7 NM	2.5 NM	1.7 NM	
TCH 45			0.5 NM	
CATEGORY	A	B	C	D
S-ILS 10R#		398/24	200 (200-½)	
S-ILS 10R		583/35	385 (400-⅝)	
S-LOC 10R	920/24	722 (700-½)	920-1⅝	722 (700-1⅝)
C CIRCLING	920-1	663 (700-1)	1280-3	NA

ELEV 257 **D** TDZE 198

098° 4.7 NM from FAF

10R 45

1.4% UP 3503 X 160

1.7% UP 3503 X 160

TWR 301

7175 X 150

28L 28R

MIRL Rwy 10L-28R
HIRL Rwy 10R-28L
REIL Rwy 28L
REIL Rwy 10L and 28R