




**TOP ALTITUDE:
7000**


WOODSIDE
113.9 OSI 
Chan 86
N37°23.55'-W122°16.88'
L-2-3, H-3

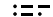
SAN JOSE
114.1 SJC 
Chan 88
N37°22.48'-W121°56.68'
L-2-3


ATIS
119.25
CLNC DEL
135.45
GND CON
120.875 348.6
MONTEREY TOWER *
118.4 257.8
NORCAL DEP CON
133.0 251.15 (340°-144°)
127.15 307.125 (145°-339°)

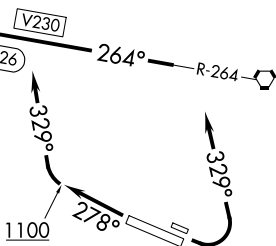
SHOEY
36°44.76'
122°08.16'
L-3

SALINAS
117.3 SNS 
Chan 120
N36°39.83'-W121°36.19'
L-3, H-3

PANOCHÉ
112.6 PXN 
Chan 73
N36°42.93'-W120°46.72'
L-3, H-3

PASO ROBLES
114.3 PRB 
Chan 90
N35°40.35'-W120°37.63'
L-3-7

AVENAL
117.1 AVE 
Chan 118
N35°38.82'-W119°58.72'
L-3-7, H-4



TAKEOFF MINIMUMS

- Rwy 10L: Standard with minimum climb of 360' per NM to 1300.
- Rwy 10R: Standard with minimum climb of 390' per NM to 1200.
- Rwy 28L: Standard with minimum climb of 310' per NM to 1100.
- Rwy 28R: Standard.

NOTE: Chart not to scale.

DEPARTURE ROUTE DESCRIPTION

TAKEOFF RUNWAYS 10L/R: Climbing left turn heading 329°. Thence. . .

TAKEOFF RUNWAYS 28L/R: Climb heading 278° until leaving 1100 or as directed by Monterey Tower. Then climbing right turn heading 329°. Thence. . .

. . . intercept SNS R-264 westbound to SHOHEY intersection. Maintain 7000 or assigned altitude. Expect clearance to filed altitude five minutes after departure.