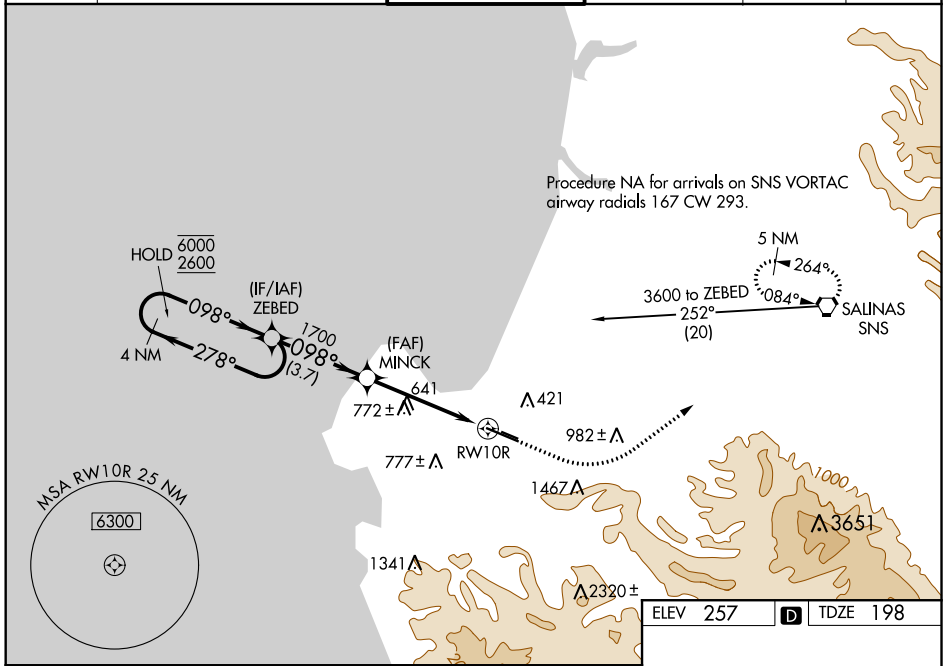


WAAS CH <b>69602</b> <b>W10A</b>	APP CRS <b>098°</b>	Rwy Idg TDZE Apt Elev	<b>7000</b> <b>198</b> <b>257</b>
--	------------------------	-----------------------------	---

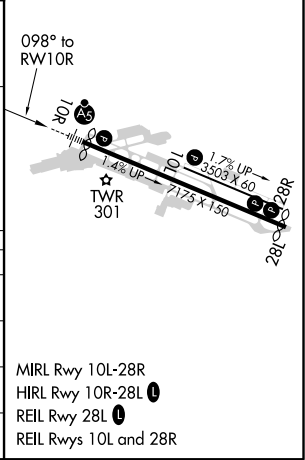
# RNAV (GPS) RWY 10R

MONTEREY RGNL (MRY)

RNP APCH.		MALSR		MISSED APPROACH: Climb to 1000 then climbing left turn to 5000 direct SNS VORTAC and hold, continue climb-in-hold to 5000.		
<p><b>▽</b> Circling NA south of Rwy 10R and 28L. For uncompensated Baro-VNAV systems, LNAV/VNAV NA below 0°C or above 54°C. For inop ALS, increase LPV visibility all Cats to 1/8 SM, LNAV/VNAV visibility all Cats and LNAV Cat C/D to 2 1/2 SM.</p>		<p><b>AS</b> </p>				
ATIS <b>119.25</b>	NORCAL APP CON <b>133.0 251.15</b> (340°-144°) <b>127.15 307.125</b> (145°-339°)	MONTEREY TOWER ★ <b>118.4</b> (CTAF) <b>257.8</b>	GND CON <b>120.875 348.6</b>	CLNC DEL <b>135.45</b>	UNICOM <b>122.95</b>	



<p>4 NM Holding Pattern</p> <p>6000 ← 278° 098° → 2600</p> <p>GP 3.00° TCH 45</p>		<p>ZEBED</p> <p>MINCK</p> <p>*2.4 NM to RWY 10R</p> <p>RWY 10R</p>		<p>1000</p> <p>5000</p> <p>SNS</p>
<p>098° to RWY 10R</p> <p>1000</p> <p>1700</p> <p>3.7 NM</p> <p>2.3 NM</p> <p>2.4 NM</p>		<p>*LNAV only</p>		
CATEGORY	A	B	C	D
LPV DA	718-1 1/2		520 (500-1 1/2)	
LNAV/VNAV DA	789-1 3/4		591 (600-1 1/4)	
LNAV MDA	980/24 782 (800-1/2)	980/40 782 (800-3/4)	980-1 3/4	782 (800-1 3/4)
<b>C</b> CIRCLING	980-1 723 (800-1)	980-1 1/4 723 (800-1 1/4)	1280-3 1023 (1100-3)	NA



SW-2, 22 APR 2021 to 20 MAY 2021

SW-2, 22 APR 2021 to 20 MAY 2021