

LOC/DME I-APC <b>111.3</b> Chan 50	APP CRS <b>006°</b>	Rwy Idg TDZE Apt Elev <b>5930</b> <b>17</b> <b>36</b>
--	------------------------	--

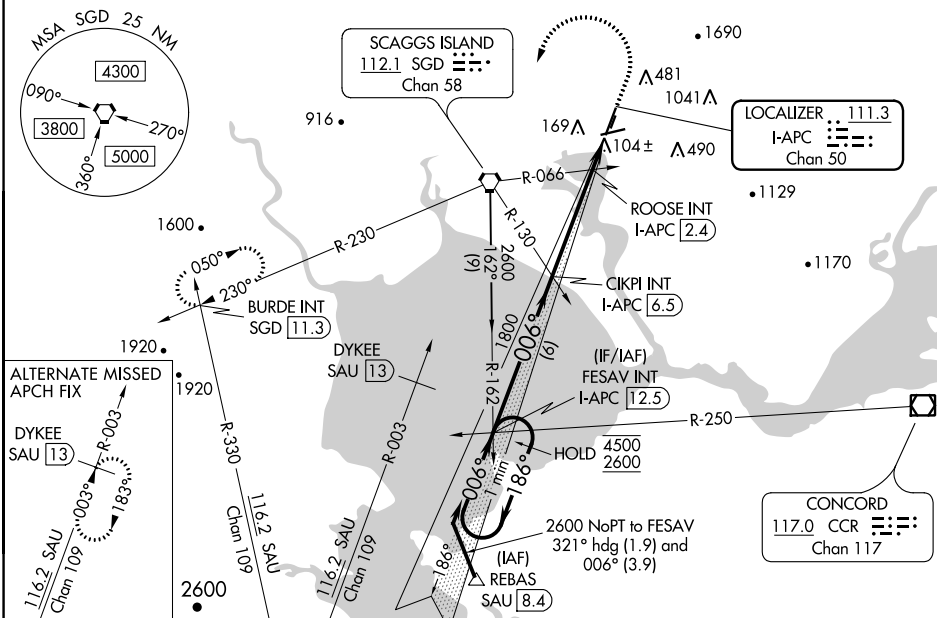
# ILS or LOC Z RWY 1L

NAPA COUNTY (APC)

**⚠** Autopilot coupled approach NA below 530. Inop table does not apply to S-ILS 1L. Circling Cats A/B/C NA northeast of Rwy 19R and 24. Circling Cat D NA east of Rwy 19L-1R. Circling Rwy 6 NA at night.

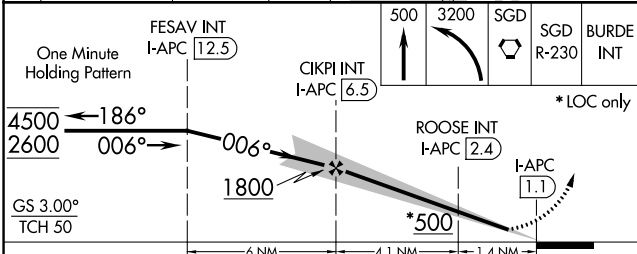
**MALS** MISSED APPROACH: Climb to 500 then climbing left turn to 3200 direct SGD VORTAC and on SGD VORTAC R-230 to BURDE INT/SGD 11.3 DME and hold, continue climb-in-hold to 3200.

ATIS <b>124.05</b>	OAKLAND CENTER <b>127.8 353.5</b>	NAPA TOWER ★ <b>118.7 (CTAF) 257.8</b>	GND CON <b>121.7</b>	CLNC DEL <b>127.85</b>	UNICOM <b>122.95</b>
-----------------------	--------------------------------------	---	-------------------------	---------------------------	-------------------------



SW-2, 22 APR 2021 to 20 MAY 2021

SW-2, 22 APR 2021 to 20 MAY 2021



ELEV 36	TDZE 17
MIRL Rwy 6-24 and 1L-19R	
REIL Rwy 6	

CATEGORY	A	B	C	D
S-ILS 1L	217-3/4		200 (200-3/4)	
S-LOC 1L	500-3/4 483 (500-3/4)		500-1 1/8 483 (500-1 1/8)	
<b>C</b> CIRCLING	600-1 564 (600-1)	680-1 644 (700-1)	1280-3 1244 (1300-3)	1300-3 1264 (1300-3)
ROOSE FIX MINIMUMS (DUAL VOR RECEIVERS OR DME REQUIRED)				
S-LOC 1L	360-3/4		343 (400-3/4)	
<b>C</b> CIRCLING	600-1 564 (600-1)	680-1 644 (700-1)	1280-3 1244 (1300-3)	1300-3 1264 (1300-3)

