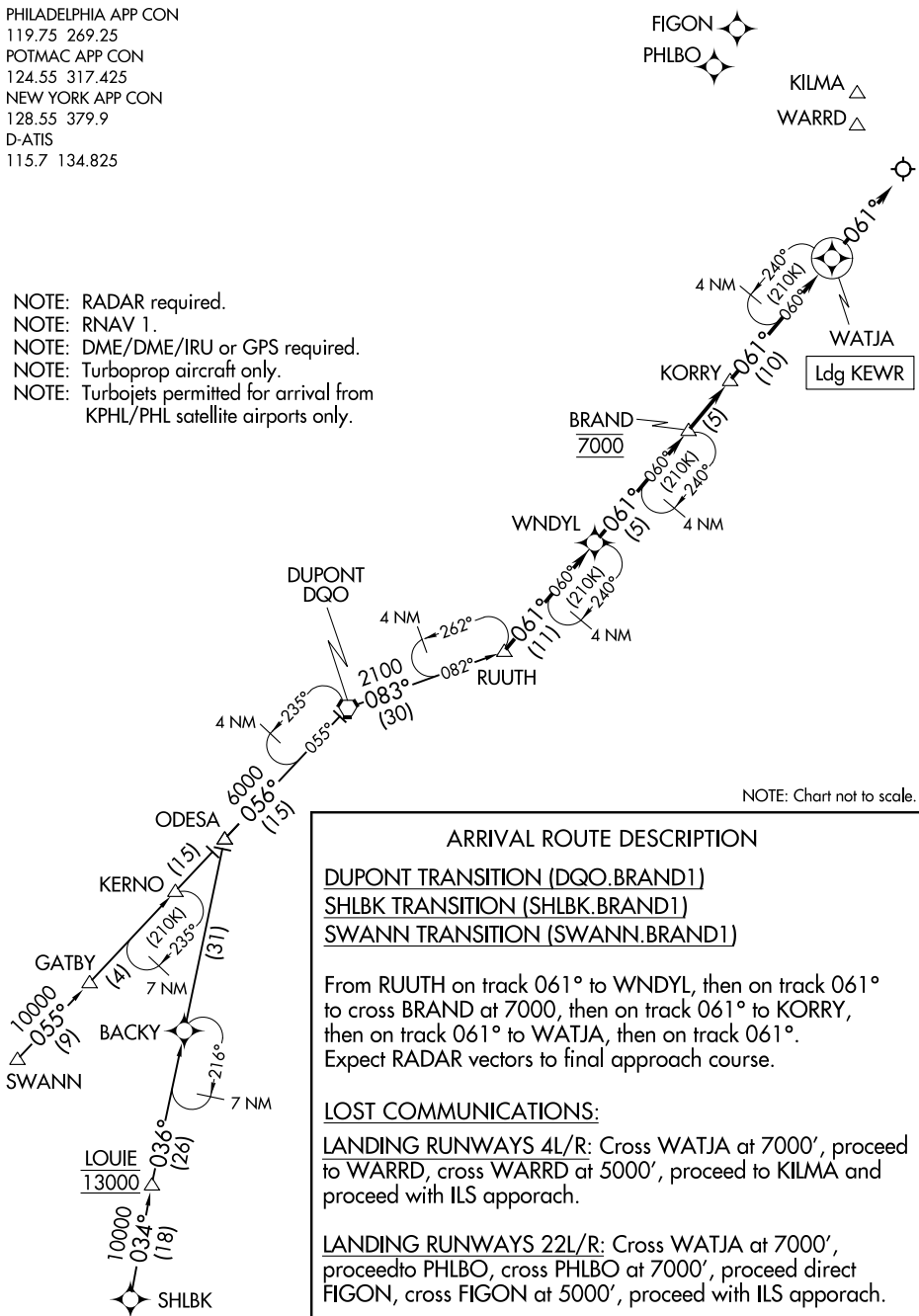


BRAND ONE ARRIVAL (RNAV)

PHILADELPHIA APP CON
 119.75 269.25
 POTMAC APP CON
 124.55 317.425
 NEW YORK APP CON
 128.55 379.9
 D-ATIS
 115.7 134.825

- NOTE: RADAR required.
- NOTE: RNAV 1.
- NOTE: DME/DME/IRU or GPS required.
- NOTE: Turboprop aircraft only.
- NOTE: Turbojets permitted for arrival from KPHL/PHL satellite airports only.



NOTE: Chart not to scale.

ARRIVAL ROUTE DESCRIPTION

- DUPONT TRANSITION (DQO.BRAND1)
- SHLBK TRANSITION (SHLBK.BRAND1)
- SWANN TRANSITION (SWANN.BRAND1)

From RUUTH on track 061° to WNDYL, then on track 061° to cross BRAND at 7000, then on track 061° to KORRY, then on track 061° to WATJA, then on track 061°.

Expect RADAR vectors to final approach course.

LOST COMMUNICATIONS:

LANDING RUNWAYS 4L/R: Cross WATJA at 7000', proceed to WARRD, cross WARRD at 5000', proceed to KILMA and proceed with ILS approach.

LANDING RUNWAYS 22L/R: Cross WATJA at 7000', proceed to PHLBO, cross PHLBO at 7000', proceed direct FIGON, cross FIGON at 5000', proceed with ILS approach.

BRAND ONE ARRIVAL (RNAV)

NE-2, 22 APR 2021 to 20 MAY 2021

NE-2, 22 APR 2021 to 20 MAY 2021