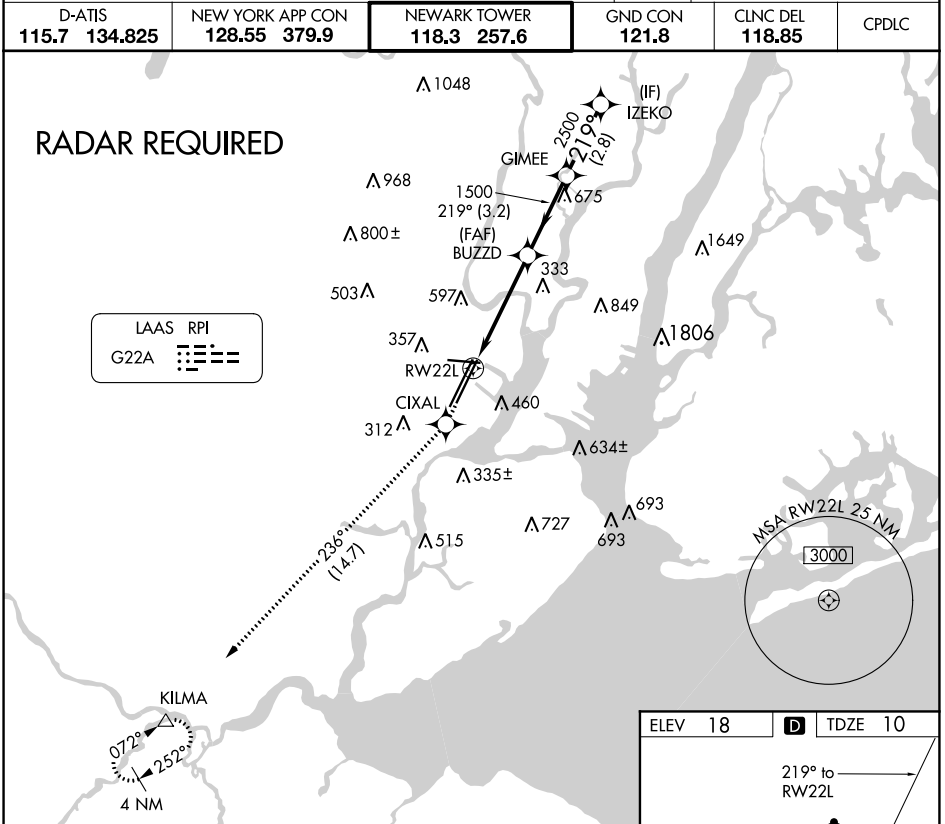


GBAS CH <b>21494</b> <b>G22A</b>	APP CRS <b>219°</b>	Rwy Idg <b>8207</b> TDZE <b>10</b> Apt Elev <b>18</b>
--	------------------------	---

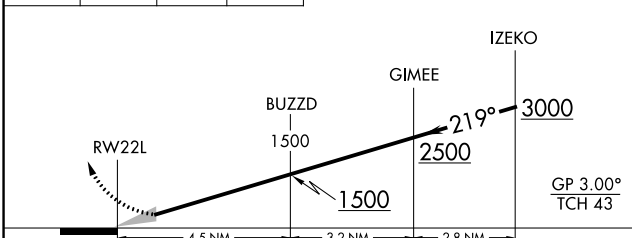
# GLS RWY 22L

NEWARK LIBERTY INTL (EWR)

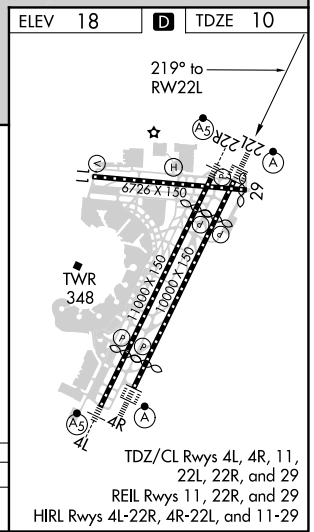
	GPS Required. For inoperative MALSr increase GLS all Cats visibility to RVR 4000. DME/DME RNP-0.3 NA. Autopilot coupled approach NA below 210.	MISSED APPROACH: Climb to 3000 direct CIXAL and on track 236° to KILMA and hold.			
	D-ATIS <b>115.7 134.825</b>	NEW YORK APP CON <b>128.55 379.9</b>	NEWARK TOWER <b>118.3 257.6</b>	GND CON <b>121.8</b>	CLNC DEL <b>118.85</b>



3000	CIXAL	KILMA	VGSi and GLS glidepath not coincident (VGSi Angle 3.00/TCH 60).
↑		tr 236°	



CATEGORY	A	B	C	D
GLS DA	210/18 200 (200-1/2)			



NE-2, 22 APR 2021 to 20 MAY 2021

NE-2, 22 APR 2021 to 20 MAY 2021

# GLS RWY 22L