

GBAS CH 20672 G22B	APP CRS 219°	Rwy Idg TDZE 10 Apt Elev 17	9560
--	------------------------	---	-------------

GLS RWY 22R

NEWARK LIBERTY INTL (EWR)

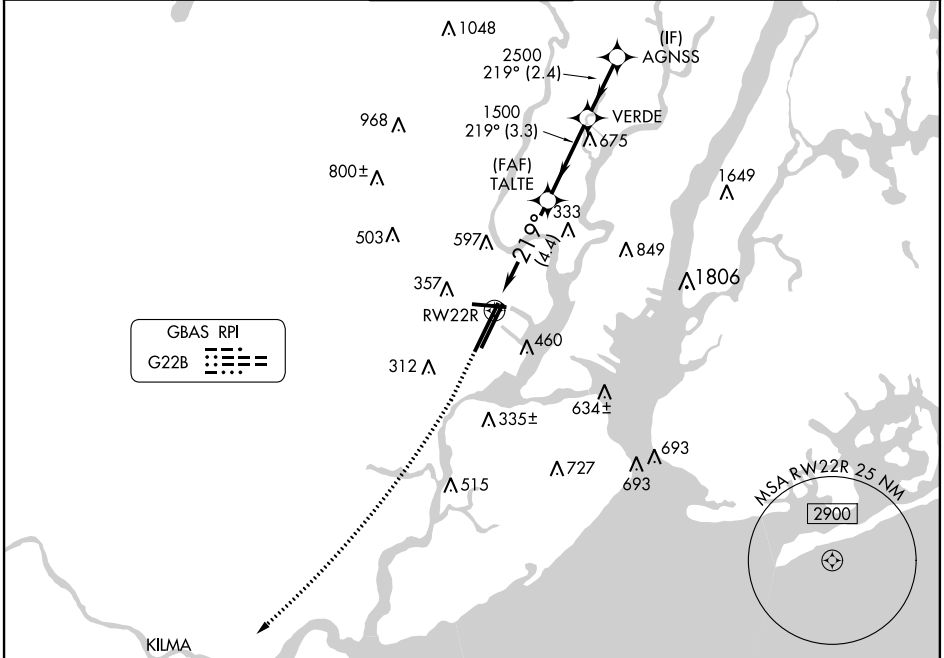
RNP APCH. GPS required.

MALSR

MISSED APPROACH: Climb to 600 then climbing right turn to 3000 direct KILMA and hold.

Autopilot coupled approach NA below 210.

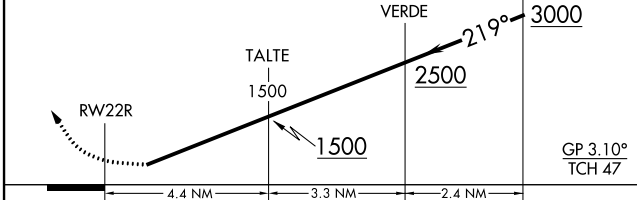
D-ATIS 115.7 134.825	NEW YORK APP CON 128.55 379.9	NEWARK TOWER 118.3 257.6	GND CON 121.8	CLNC DEL 118.85	CPDLC
--------------------------------	---	------------------------------------	-------------------------	---------------------------	-------



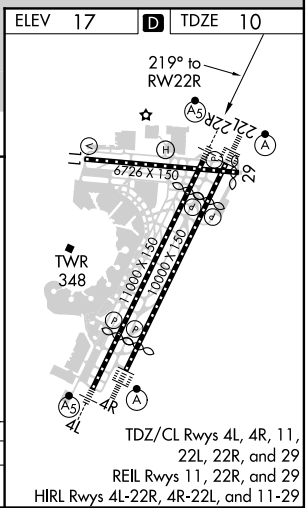
NE-2, 22 APR 2021 to 20 MAY 2021

NE-2, 22 APR 2021 to 20 MAY 2021

600 3000 KILMA VGSi and GLS glidepath not coincident (VGSi Angle 3.10/TCH 70).



CATEGORY	A	B	C	D
GLS DA	210/18		200 (200-1/2)	



TDZ/CL Rwy 4L, 4R, 11, 22L, 22R, and 29
REIL Rwy 11, 22R, and 29
HIRL Rwy 4L-22R, 4R-22L, and 11-29