

LOC/DME I-EWR 110.75 Chan 44 (Y)	APP CRS 039°	Rwy Idg 8460 TDZE 10 Apt Elev 17
---	------------------------	--

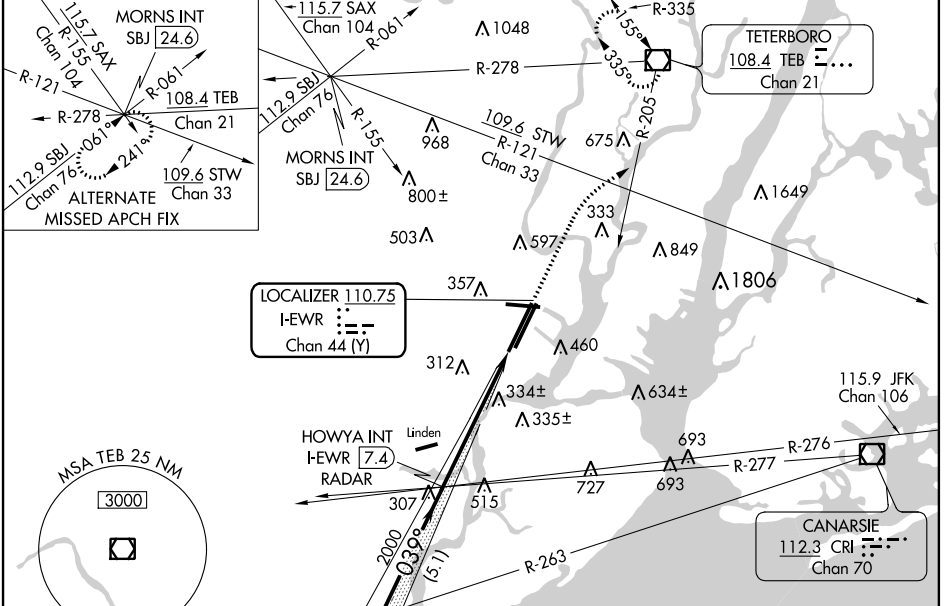
ILS RWY 4L (SA CAT I & II)

NEWARK LIBERTY INTL (EWR)

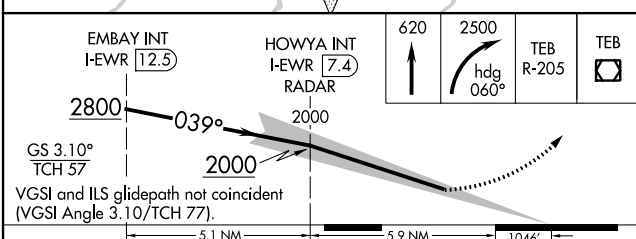
▽ SA CAT I: Requires specific OPSPEC, MSPEC, or LOA approval and use of HUD to DH.
▲ SA CAT II: Reduced lighting; requires specific OPSPEC, MSPEC, or LOA approval and use of autoland or HUD to touchdown.

MALS
AS
MISSED APPROACH: Climb to 620 then climbing right turn to 2500 on heading 060° and TEB VOR/DME R-205 to TEB VOR/DME and hold.

D-ATIS 115.7 134.825	NEW YORK APP CON 128.55 379.9	NEWARK TOWER 118.3 257.6	GND CON 121.8	CLNC DEL 118.85	CPDLC
--------------------------------	---	------------------------------------	-------------------------	---------------------------	-------

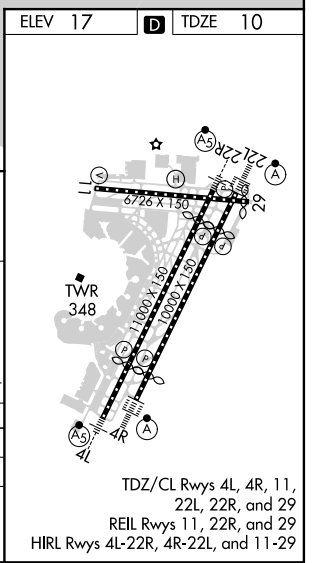


ELEV 17	D	TDZE 10
---------	----------	---------



CATEGORY	A	B	C	D
S-ILS 4L	SA CAT I	RA 150/14	150 DA 160	
S-ILS 4L	SA CAT II	RA 100/12	100 DA 110	

SA CATEGORY I & II ILS - SPECIAL AIRCREW & AIRCRAFT CERTIFICATION REQUIRED



TDZ/CL Rwy's 4L, 4R, 11, 22L, 22R, and 29
REIL Rwy's 11, 22R, and 29
HIRL Rwy's 4L-22R, 4R-22L, and 11-29

NE-2, 22 APR 2021 to 20 MAY 2021

NE-2, 22 APR 2021 to 20 MAY 2021