

LOC/DME I-GPR 109.15 Chan 28 (Y)	APP CRS 107°	Rwy ldg 6726 TDZE 17 Apt Elev 17
---	------------------------	---

ILS or LOC RWY 11

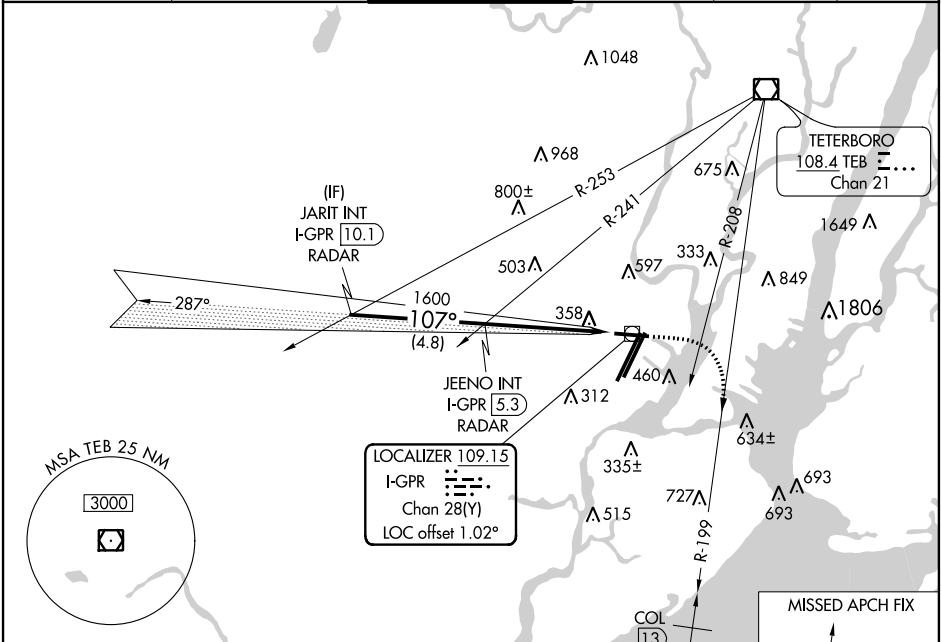
NEWARK LIBERTY INTL (EWR)

DME required. RADAR required for procedure entry.

When Circling to Rwy 29 at night, operational VGSI required, remain on or above VGSI glidepath until threshold.

MISSED APPROACH: Climb to 1700 heading 107°, at TEB VOR/DME R-208 right turn to intercept TEB VOR/DME R-199 and COL VOR/DME R-019 to COL VOR/DME and hold. At COL 13 DME climb to 3000.

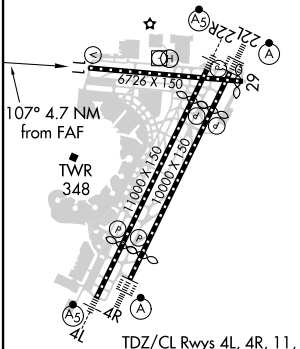
D-ATIS 115.7 134.825	NEW YORK APP CON 128.55 379.9	NEWARK TOWER 118.3 257.6	GND CON 121.8	CLNC DEL 118.85	CPDLC
--------------------------------	---	------------------------------------	-------------------------	---------------------------	-------



NE-2, 22 APR 2021 to 20 MAY 2021

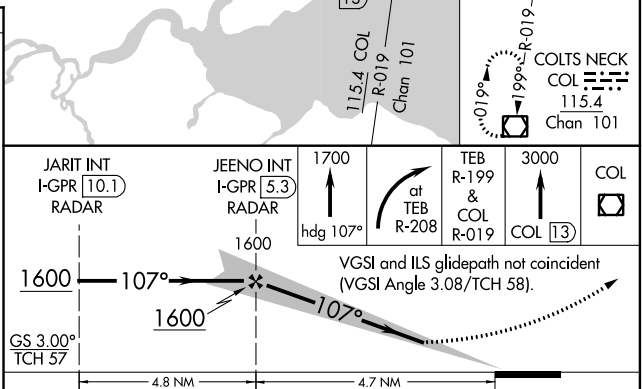
NE-2, 22 APR 2021 to 20 MAY 2021

ELEV 17	D	TDZE 17
---------	----------	---------



TDZ/CL Rws 4L, 4R, 11, 22L, 22R, and 29
REIL Rws 11, 22R and 29
HIRL Rws 4L-22R, 4R-22L and 11-29
FAF to MAP 4.7 NM

Knots	60	90	120	150	180
Min:Sec	4:42	3:08	2:21	1:53	1:34



CATEGORY	A	B	C	D
S- ILS 11	603-2 586 (600-2)			
S- LOC 11	580/50	563 (600-1)	580-1½ 563 (600-1½)	580-1¾ 563 (600-1¾)
C CIRCLING	760-1 743 (800-1)	820-1 803 (900-1)	900-2¾ 883 (900-2¾)	900-3 883 (900-3)