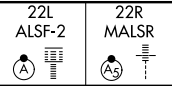


ILS or LOC RWY 22L

NEWARK LIBERTY INTL (EWR)

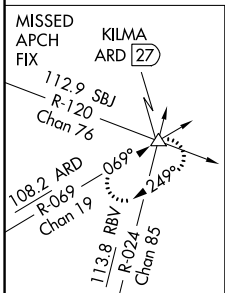
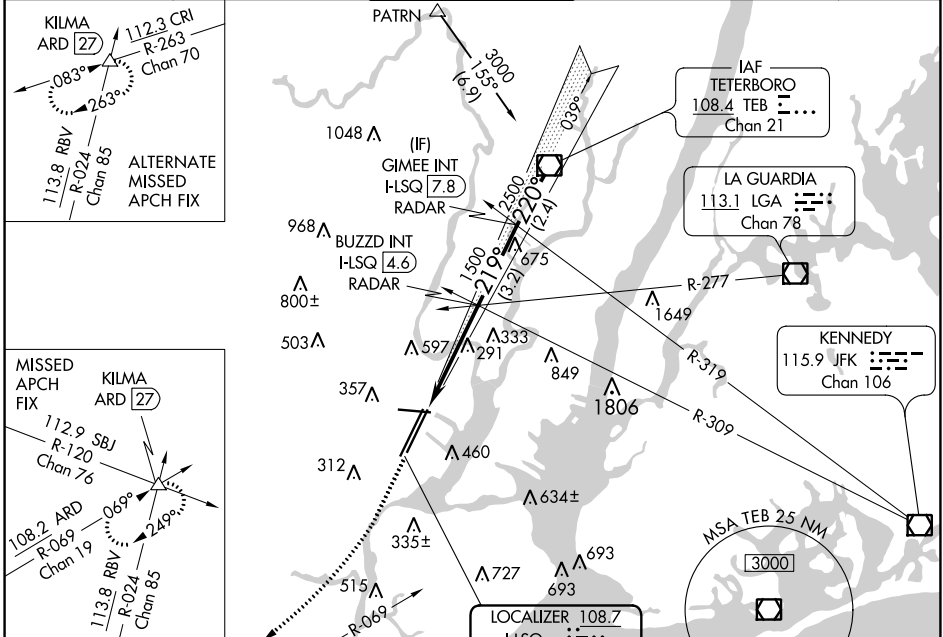
LOC/DME I-LSQ	APP CRS	Rwy Idg	22L	22R
108.7	219°	TDZE	8207	9560
Chan 24		Apt Elev	11	10

When Circling to Rwy 29 at night, operational VGSi required, remain on or above VGSi glidepath until threshold. Inop table does not apply to sidestep Rwy 22R Cats A/B.

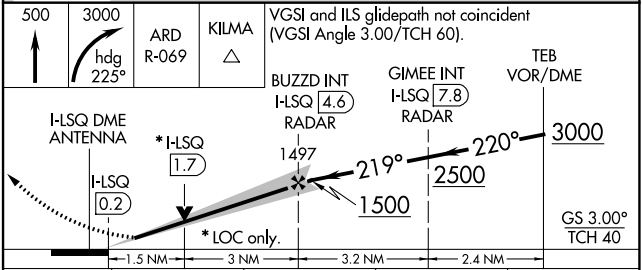
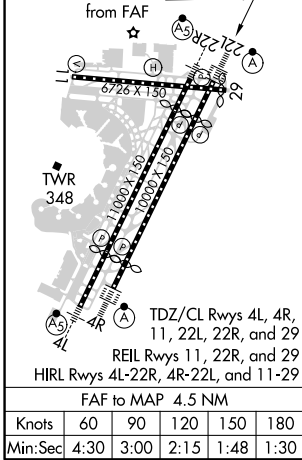


MISSED APPROACH: Climb to 500 then climbing right turn to 3000 on heading 225° and ARD VOR/DME R-069 to KILMA INT/ARD 27 DME and hold.

D-ATIS	NEW YORK APP CON	NEWARK TOWER	GND CON	CLNC DEL	CPDLC
115.7 134.825	128.55 379.9	118.3 257.6	121.8	118.85	



ELEV 17	D	TDZE 22L 11	TDZE 22R 10
---------	----------	-------------	-------------



CATEGORY	A	B	C	D
S-ILS 22L	211/18 200 (200-½)			
S-LOC 22L	560/24	549 (600-½)	560/60	549 (600-1¼)
SIDESTEP Rwy 22R	560/50	550 (600-1)	560/60 550 (600-1¼)	560-1½ 550 (600-1½)
C CIRCLING	760-1 743 (800-1)	820-1 803 (900-1)	900-2¾ 883 (900-2¾)	900-3 883 (900-3)

NE-2, 22 APR 2021 to 20 MAY 2021

NE-2, 22 APR 2021 to 20 MAY 2021